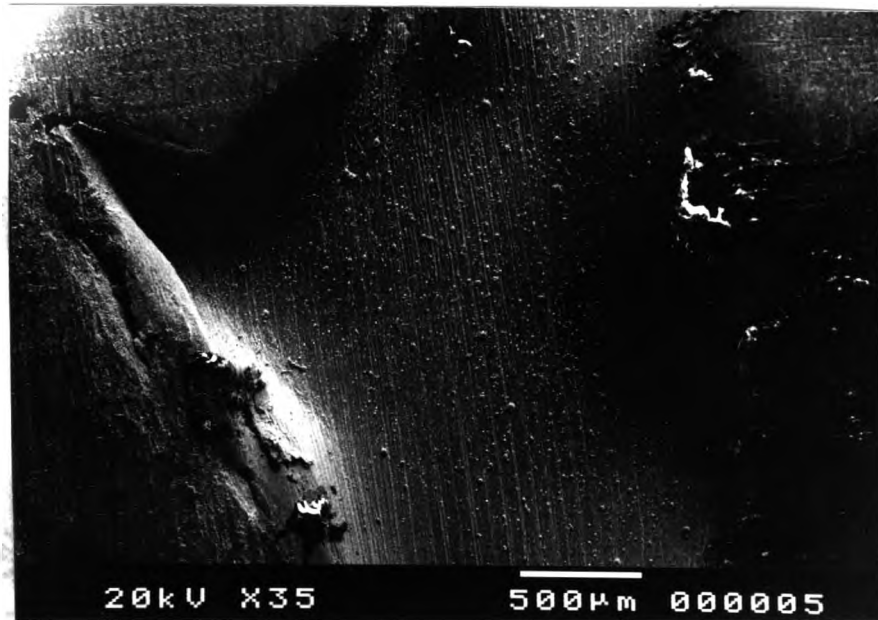


REFERENCES

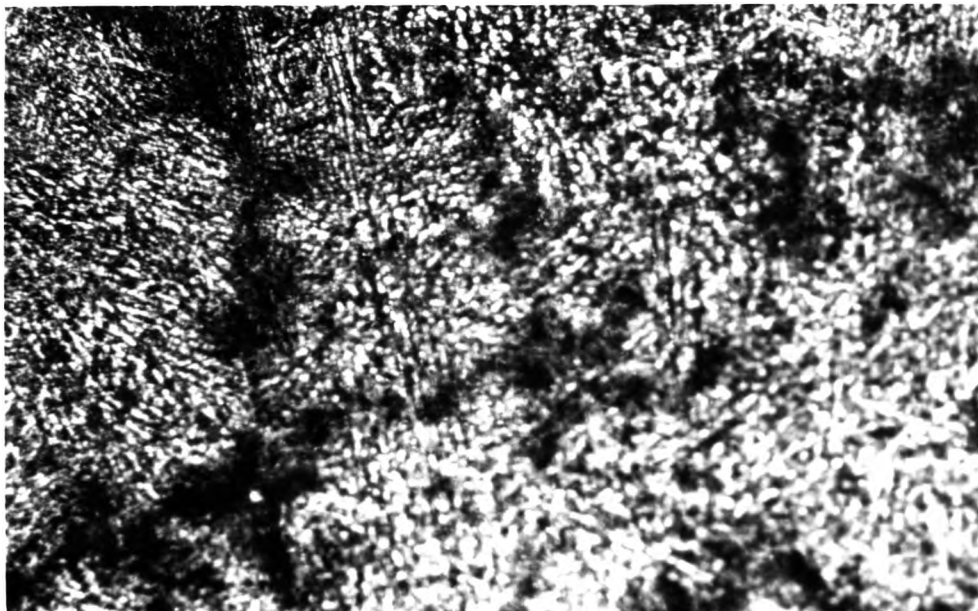
1. Manus Satherachinda. Iron-Steel Foundry Engineering. Faculty of Engineering Chulalongkorn University. 1981. (in Thai)
2. Dr. Haris Sutabutra, King Mongkut Institute of Technology, Dr. Kenji Chijiiwa, University of Tokyo. Foundry. The Association for International Technical Promotion. 1974. (in Thai)
3. Hornung, Mary Jane. Systematic approach to cast iron defect analysis. *Modern Casting*. v 80 n 4 Apr 1990: 33-36.
4. Sweeting, F.B.J.; Thorpe, W.R.; Peittit, A.N. Fault and cause diagnosis of casting defects. A Case study. *Quality and Reliability Engineering International*. v 8 n 2 Mar-Apr 1992: 79-91.
5. W. Davies. Foundry sand control, Testing research and development, Research and development. The United Steel Companies Ltd., Sheffield. 1950.
6. Middleton J. M. Steel foundry molding materials. *British Foundryman*. v 64. 1970: 207-223.
7. Anon. Sand/binder/sand preparation/mold & coremaking. *Foundry Management & Technology*. v 124 n 1 Jan., 12 pp. 1996
8. Thomas S. Piwonka, The University of Alabama. *Molding and Casting Process, Casting*. ASM Handbook. 1992: 203-613.
9. Sweeting, F.B.J.; Thorpe, W.R.; Peittit, A.N. Fault and cause diagnosis of casting defects. Case study No. 2. *Quality and Reliability Engineering International*. v 9 n 1 Jan-Feb. 1993: 15-27.

10. Batson, Robert G.; Phillips, J. Fred, Parameter design experiments in foundry processes. Annual Quality Congress Transactions. v 46. Published by ASQC, Milwaukee, WI, USA. 1992: 30-36.
11. Beech J. A new look at blow hole formation. The Metallurgist & Materials Technologist. April. 1974: 129-232
12. Shin, Teng-Shin; Hsieh, Chang-Swing. Study on the vapor-transport in sand molds and its effect on the quality of casting. Chung-Kuo Chi Hsueh Kung Ch'eng Hsueh Pao/Journal of Chinese Society of Mechanical Engineers. v 12 n 4 Aug. 1991: 435-446.
13. W. Davies. Foundry sand control. Testing research and development, Research and development. The united steel companies LTD. Sheffield. 1950.
14. Mr. Isamu Taki, Basic casting lecture, held at Department of Metallurgical engineering, Chulalongkorn University, Bangkok, 16 March 1998.

APPENDIX



SEM micrograph of blowhole on the cut surface.



Benitic structure with ferrite boundary of CrMo40L casting
(X200, etched by 5% nital)

BIOGRAGHY

Mr. Thanaporn Korad was born on 3 January ,1973 in Udornthani province, Thailand. He received a bachelor in Engineering(Metallurgical Engineering) from Chulalongkorn University in 1994.

He used to work at Board of Investment, Asia Cement Co.,Ltd and Energy Conservation Center of Thailand respectively.

He began his study for a master's degree in Metallurgical Engineering at Chulalongkorn University in 1995.

