



## REFERENCES

### Thai

- Apichart Sawaidee, *Gampraa Khon Nok (Orphant with Feather)*. 2004. Bangkok: The Spirit in Education Movement.
- Banyaai Sarup lae Kohmun Samkan Ampur Maewang Changwat Chiangmai (Important Information on Mae Wang District, Chiang Mai Province). 2547. Chiang Mai: Mae Wang district office.
- Chanita Rukspollmuang. et al. 1988. "The Education of Shan, Yunnanese, Lua and Karen: A Case Study in Ban Mai Loong Khon, Ban Tham, Ban Kong Loi, and Ban Pa Taek" A research paper presented to Chulalongkorn University.
- Office of the Election Commission of Thailand. 2005. "The General Election Result for the House of Representatives on 6 February 2548".  
<http://203.185.151.120/ect48/ReportCandi.aspx> (open on February 21, 2005).
- Methinee Kid-Aam. et al. "Raigan Garn Fuk Park Patibat Gan Sangkom Songkro 2" (Report of Social Welfare Workshop 2). 2001. A paper submitted to the Faculty of Social Welfare, Thammasart University.
- Rai Mun Wian Chabab Yor* (Slash-and-Burn Agricultural System: Status and Change). 2004. A booklet presented at the Seminar on Rotational Fields by the Faculty of Sociology, Chiang Mai University, October 15-16.

English

Agamben, Giorgio. 1998. *Homo Sacer: Sovereign Power and Bare Life*. California: Stanford University Press.

Amara Pongsapich. 2004. "Coexistence and Cultural Diversity along the Borders: Two Case Studies from Thailand" in *Ethnic Groups in Asia: Harmony and Conflict*, A paper presented at International Forum on East Asian Studies 3<sup>rd</sup> International Conference, December 17-18. Bangkok: Chulalongkorn University.

Bangkok Post. May 16, 1999. "Tribespeople Rally Against Govt".

Barron, Milton L. (ed.). 1967. *Minorities in a Changing World*. New York: Alfred A. Knopf.

Bechstedt, Hans-Dieter. 2002. "Identity and Authority in Thailand" in *National Identity and Its Defenders: Thailand 1939-1989*, ed. by Craig J. Reynolds. Chiang Mai: Silkworm Books. pp.238-261.

Boucaud, André and Louis. 1988. *Burma's Golden Triangle: On the Trail of the Opium Warlords*. Hong Kong: Asia 2000.

Buergin, Reiner. 2000. "'Hilltribes' and Forests: Minority Policies and Resource Conflicts in Thailand" *Socio-Economics of Forest Use in the Tropics and Subtropics (SEFUT) Working Paper No.7*.

Chayan Vaddhanaphuti. 1993. "The Situation of Hilltribe Women and Children" A paper prepared for Situation Analysis and Strategy Development Workshop, Hua Hin, 2-4 April March.

Diller, Anthony. 2002. "What Makes Central Thai a National Language?" in *National Identity and Its Defenders: Thailand 1939-1989*, ed. by Craig J. Reynolds. Chiang Mai: Silkworm Books. pp.71-107.

- Hai, Chau Thi. 2004. "Harmony and Conflict of Ethnic Groups in Southeast Asia: Community of Ethnic Chinese in Indonesia as a Case Study" in *Ethnic Groups in Asia: Harmony and Conflict*. A paper presented at International Forum on East Asian Studies 3<sup>rd</sup> International Conference, December 17-18. Bangkok: Chulalongkorn University.
- Hayami, Yoko. 1996. "Karen Tradition According to Christ or Buddha: The Implications of Multiple Reinterpretations for a Minority Ethnic Group in Thailand" *Journal of Southeast Asian Studies*, 34 (3), September.
- Hinton, Peter. 1979. "The Karen, Millennialism, and the Politics of Accommodation to Lowland States" in *Ethnic Adaptation and Identity: The Karen on the Thai Frontier with Burma*. Philadelphia: Institute for the Study of Human Issues. pp.81-98.
- Iijima, Shigeru. 1979. "Ethnic Identity and Sociocultural Change Among Sgaw Karen in Northern Thailand" in *Ethnic Adaptation and Identity: The Karen on the Thai Frontier with Burma*. Philadelphia: Institute for the Study of Human Issues. pp.99-118.
- Keyes, Charles F. 1971. "The Karens in Thai History and the History of the Karens in Thailand" A paper prepared for Symposium "A Pivotal or Marginal People: The Place of the Karens in Southeast Asia" held at the Annual Meeting of the Association for Asian Studies, Washington, D.C., March 29.
- Keyes, Charles F. 1979. "The Karens in Thai History and the History of the Karens in Thailand" in *Ethnic Adaptation and Identity: The Karen on the Thai Frontier with Burma*. Philadelphia: Institute for the Study of Human Issues.
- Krisadawan Hongladarom. 1999. "Competing Discourses on Hilltribes: Media Representation of Ethnic Minorities in Thailand" A paper presented at the Panel Media, Cultural Politics, and the Nation-State, 7<sup>th</sup> International Conference on Thai Studies, Amsterdam, the Netherlands, 4-8 July.

- Krisadawan Hongladarom. 1999. "Managing Our Ethnic Diversity"  
Bangkok Post. November 30.
- Kunstadter, Peter. 1968. "Socio-cultural Change among Upland Peoples of Thailand: Lua' and Karen – two Modes of Adaptation" in *Proceedings of the VIIIth International Congress of Anthropological and Ethnological Sciences, 1968, Tokyo and Kyoto, Vol. II, Ethnology*. Tokyo: Science Council of Japan.
- Kunstadter, Peter. 1979. "Ethnic Group, Category, and Identity: Karen in Northern Thailand" in *Ethnic Adaptation and Identity: The Karen on the Thai Frontier with Burma*. Philadelphia: Institute for the Study of Human Issues. pp.119-164.
- Kwanchewan Buadaeng. 1999. "The Karen Ancestor Spirits: Cut Off and Bound Up"  
A paper presented at 7<sup>th</sup> International Conference on Thai Studies, Amsterdam, 4-8 July.
- Kwanchewan Buadaeng. 2001. "Negotiating Religious Practices in a Changing Sgaw Karen Community in North Thailand" Doctor Thesis, University of Sydney.
- Lebar, Frank M. et al. 1964. *Ethnic Groups of Mainland Southeast Asia*. New Haven: Human Relations Area Files Press.
- Lehman, F. K. 1979. "Who Are the Karen, and If So, Why? Karen Ethnohistory and a Formal Theory of Ethnicity" in *Ethnic Adaptation and Identity: The Karen on the Thai Frontier with Burma*. Philadelphia: Institute for the Study of Human Issues. pp.215-254.
- Lintner, Bertil. 2002. *Blood Brothers: Crime, Business and Politics in Asia*. Australia: Allen & Unwin.
- Marshall, Harry Ignatius. 1922. *The Karen People of Burma: A Study in Anthropology and Ethnology*. Ohio: The University at Columbus.
- Mischung, Roland. 1986. "Environmental 'Adaptation' among Upland Peoples of Northern Thailand: A Karen/Hmong (Meo) Case Study" A final research report presented to the National Research Council of Thailand.

- Moerman, Michael. 1967. "Being Lue; Uses and Abuses of Ethnic Identification" in *Essays on the Problem of Tribe in Contemporary Sociopolitical Contexts*, ed. by June Helm, Proceedings of the 1967 Annual Spring Meeting of the American Ethnological Society. Seattle: The University of Washington Press.
- Moerman, Michael and Patricia L. Miller. 1989. "A Quarter Century of Change in a Thai-Lue Village" A final report to the National Research Council of Thailand, September 9.
- Mohd Razha Rashid. 1975. "Karen Swiddening Techniques" in *Farmers in the Hills: Upland Peoples of North Thailand*, ed. by Anthony R. Walker. Penang: Universiti Sains Malaysia Press. pp.101-107.
- Office of the National Education Commission. 2002. *Education in Thailand 2002/2003*. Bangkok: Office of the National Education Commission.
- Pati Joni Odochao. 2001. "We Believe in the Community" from the Regional Community Forestry Training Center for Asia and the Pacific E-letter. November 2.
- Perry-Castañeda Library Map Collection. 1974. "Ethnic Groups from Thailand". [http://www.lib.utexas.edu/maps/middle\\_east\\_and\\_asia/thailand\\_1974\\_ethnic\\_groups.jpg](http://www.lib.utexas.edu/maps/middle_east_and_asia/thailand_1974_ethnic_groups.jpg) (open on March 13, 2005).
- Piker, Steven. 1975. "The Post-Peasant Village in Central Plain Thai Society" in *Change and Persistence in Thai Society, Essays in Honor of Lauriston Sharp*, ed. by George William Skinner and Anthony Thomas Kirsch. Ithaca: Cornell University Press. pp.298-323.
- Piyaporn Wongruang. 2003. "Survival Dance of the Karen" *The Nation*. April 19.
- Platz, Roland. 2003. "Buddhism and Christianity in Competition?: Religious and Ethnic Identity in Karen Communities of Northern Thailand" *Journal of Southeast Asian Studies*. 34 (3). pp.473-490.

- Reynolds, Craig J. 2002. "Introduction: National Identity and Its Defenders" in *National Identity and Its Defenders: Thailand 1939-1989*, ed. by Craig J. Reynolds. Chiang Mai: Silkworm Books. pp.1-32.
- Ritchie, Mark A. and Bai Yang. 1999. "Demographic and Social Survey of Tribal People" Center for the Coordination of Non-Governmental Tribal Development Organizations (CONTO) and World Concern.
- Sanit Wongsprasert. 1988. "Impact of the Dhammacarik Bhikkhus' Programme on the Hill Tribes of Thailand" in *Ethnic Conflict in Buddhist Societies: Sri Lanka, Thailand and Burma*. Colorado: Westview Press. pp.126-137.
- Sulak Sivaraksa "The Crisis of Siamese Identity" in *National Identity and Its Defenders: Thailand 1939-1989*, ed. by Craig J. Reynolds. Chiang Mai: Silkworm Books. pp.33-48.
- Supara Janchitfah. 2002. "Falling Trees Have Long Shadows" Bangkok Post. March 24.
- Surapong Kongchantuk. 1993. "A Society that Lives in Peace with the Forest" Bangkok Post. March 8.
- Tanida Sirorattanakul. 1995. "Caught Between Two Worlds" Bangkok Post. May 25.
- The International Network of Forests and Communities (INFC). Not dated.  
 "Community Forestry in Thailand: Legislation and Policy".  
[http://www.forestsandcommunities.org/Country\\_Profiles/Thailand.html](http://www.forestsandcommunities.org/Country_Profiles/Thailand.html)  
 (open on March 16, 2005).
- Usaneya Perngparn. et al. 1992. "Impact of Health Development on Child Rearing of the Hilltribes: Karen and H'Mong" A report presented to Chulalongkorn University.
- Walker, Andrew. 1999. "Karen Economy and Rural Nostalgia in an Age of Uncertainty: Reflections from Northern Thailand" A paper presented at 7<sup>th</sup> International Conference on Thai Studies, Amsterdam. 4-8 July.

Yoshimatsu, Kumiko. 1989. "The Karen World: The Cosmological and Ritual Belief System of the Sgaw Karen in Northwestern Chiang Mai Province" A final research report presented to the National Research Council of Thailand.

## **APPENDICES**



## Appendix 1: Questionnaire

## Questionnaire

- 1) Age: ( ) years old
- 2) Sex:  male  female
- 3) Occupation: (a)  student ( high school  higher education)  
 --name of the school ( )  
 --location ( ) sub-district, ( ) district  
 --year ( )  
 --how do you go to school?  by walk  by motorcycle  
 by car  others ( )
- (b)  part-time job  
 --what is your job? ( )  
 --location ( ) sub-district, ( ) district  
 --salary ( ) baht / a month  
 --co-workers are  con muang  Karen  
 others ( ) (ex. other minorities)  
 --how long have you worked? ( )
- (c)  full-time job  
 --what is your job? ( )  
 --location ( ) sub-district, ( ) district  
 --salary ( ) baht / a month  
 --co-workers are  con muang  Karen  
 others ( ) (ex. other minorities)  
 --how long have you worked? ( )
- how long have you been inside of the village? ( )  
 --how long have you been outside of the village? ( )
- 4) Education: 1. primary school  
 --name of the school ( )  
 --location ( ) sub-district, ( ) district  
 --how do you go to school?  by walk  by motorcycle  
 by car  others ( )  
 --students are  con muang ( )%  Karen ( )%

others ( ) (ex. other minorities)  
 ( ) %  
 --grade ( ) ~ ( )

## 2. junior high school

--name of the school ( )  
 --location ( ) sub-district, ( ) district  
 --how do you go to school?  by walk  by motorcycle  
 by car  others ( )  
 --students are  con muang ( ) %  Karen ( ) %  
 others ( ) (ex. other minorities)  
 ( ) %  
 --grade ( ) ~ ( )

## 3. high school

--name of the school ( )  
 --location ( ) sub-district, ( ) district  
 --how do you go to school?  by walk  by motorcycle  
 by car  others ( )  
 --students are  con muang ( ) %  Karen ( ) %  
 others ( ) (ex. other minorities)  
 ( ) %  
 --grade ( ) ~ ( )  
 --how do you pay school fees?  by yourself  by parents  
 by loan  by scholarship  
 others ( )

## 4. vocational school

--name of the school ( )  
 --location ( ) sub-district, ( ) district  
 --how do you go to school?  by walk  by motorcycle  
 by car  others ( )  
 --students are  con muang ( ) %  Karen ( ) %  
 others ( ) (ex. other minorities)  
 ( ) %  
 --what is your major? ( )  
 --why do you choose your major?

---

--how many years? ( ) year(s)

--how do you pay school fees?  by yourself  by parents  
 by loan  by scholarship  
 others ( )

### 5. higher education

--name of the school ( )  
 --location ( ) sub-district, ( ) district  
 --how do you go to school?  by walk  by motorcycle  
 by car  others ( )  
 --what is your major? ( )  
 --why do you choose your major?

---

--how many years? ( ) year(s)  
 --how do you pay school fees?  by yourself  by parents  
 by loan  by scholarship  
 others ( )

### 5) Family:

--who do you live with?  grandfather (paternal or maternal)  
 grandmother (paternal or maternal)  
 father  mother  brother ( ) person(s)  
 sister ( ) person(s)  
 --income source  farming  labor  weaving  others ( )  
 --labor force ( ) person(s) in your family

per month

total revenue	( )baht
total expenditure	( )baht
Tax	( )baht
Food	( )baht
Water	( )baht
Electricity	( )baht
Gas	( )baht

gasoline	( )baht
Education	( )baht
Mobile phone	( )baht
Allowance	( )baht
others ( )	( )baht

--what occupation do your parents and siblings have?

( )

--what positions do your parents and siblings have in the village?

( )

--how many hours do you stay with your parents or grandparents a day? ( ) hrs

--what do your parents or grandparents teach you?

( )

--where do your parents or grandparents teach you?

( )

--do you know history of your family? (a)  yes (b)  no

--if (a), write briefly on history of your family

---



---



---



---

#### 6) Language:

	Speak	Listen	Write	Read
Karen	easily/not easily	easily/not easily	easily/not easily	easily/not easily
Standard Thai	easily/not easily	easily/not easily	easily/not easily	easily/not easily
Northern Thai	easily/not easily	easily/not easily	easily/not easily	easily/not easily

#### 7) Religion:

--you  Animism  Buddhism  Christianity  others ( )

--your parents  Animism  Buddhism  Christianity  others ( )

--your grandparents  Animism  Buddhism  Christianity  others  
( )

8) Identity: (a)  Karen (b)  Thai (c)  others ( )

--if (a), what makes you a Karen?

- Karen rituals  Karen language  Animism  Karen history  
 Karen wisdom to live with forests  Karen music  Karen poetry  
 others \_\_\_\_\_
- 

--when did you recognize a Karen identity? ( )

--are you proud of a Karen identity?  yes  no

--if (b), what makes you a Thai?

- governmental education  Buddhism  identity card  house register  
 governmental welfare  standard Thai  respect for His Majesty the King  
 others \_\_\_\_\_
- 

--when did you recognize a Thai identity? ( )

--are you proud of a Thai identity?  yes  no

9) Activity:

--would you like to preserve Karen tradition? (a)  yes (b)  no

--if (a), how do you pursue it?

---



---



---

--do the government or NGOs join in the activities? (a)  yes (b)  no

--if (a), how do the government or NGOs take a role in the activities?

---



---



---

## 10) Election:

--which party will you vote for?  Thai Rak Thai  Democrat  Mahachon  
 Chart Thai  others ( )

--why? \_\_\_\_\_  
\_\_\_\_\_  
\_\_\_\_\_

--which party will your parents vote for?  Thai Rak Thai  Democrat  
 Mahachon  Chart Thai  
 others ( )

## Appendix 2: Candidates for the House of Representatives

เอกสารแนะนำผู้สมัครสมาชิกสภาผู้แทนราษฎร แบบแบ่งเขตเลือกตั้ง				
เขตเลือกตั้งที่ 7 จังหวัดเชียงใหม่				
หมายเลขพรรคการเมือง	รูปผู้สมัคร	ชื่อ-นามสกุล (อายุ) อาชีพสุดท้ายก่อนสมัคร	การศึกษาสูงสุด	อาชีพ/ประสบการณ์ในการทำงาน
1 ชาติไทย		นายสมชาย ตั้งสัตยาบรรณ (41) รับจ้าง	ปริญญาตรี รัฐศาสตร์ บัณฑิต	- สมาชิกสภาองค์การบริหารส่วนจังหวัด พ.ศ. 2543-2547
4 ประชาธิปไตย		นายเสน่ห์ สุรินทร์ (50) ทนายความ	ปริญญาโท รัฐศาสตรมหา บัณฑิต	- ประธานสภาเทศบาลนครเชียงใหม่
9 ไทยรักไทย		นายสุรพล เกียรติไชยากร (65) นักการเมือง	ปริญญาตรี ศิลปศาสตร์ บัณฑิต	- สมาชิกสภาผู้แทนราษฎร เขต 7 จังหวัดเชียงใหม่ พ.ศ. 2544
10 ความหวังใหม่		นายสรเดช มานะมีทองคำ (40) รับจ้าง	ปริญญาตรี ครุศาสตร์ บัณฑิต	- ครูโรงเรียนลพมิตรวิทยา อ.แม่แจ่ม
11 มหาชน		นายณรงค์ กู้อิทธิวงศ์ (59) นักการเมือง	ปริญญาโท ศิลปศาสตร์ มหาบัณฑิต	- สมาชิกสภาผู้แทนราษฎรจังหวัดเชียงใหม่ พ.ศ. 2539
15 ชาติประชาธิปไตย		นายพรชัย พรประทีปกุล (39) รับจ้าง	ปริญญาตรี บริหารการศึกษา	- เคยเป็นเลขาธิการศูนย์ประสานงานองค์การเอกชนชาวไทยภูเขา

**Appendix 3: Election Result in Mae Wang District, Chiang Mai Province**

<b>Rank</b>	<b>Party</b>	<b>No.</b>	<b>Candidate</b>	<b>Score</b>
1	Thai Rak Thai	9	Mr. Surapol Kiatchaiyakorn	47,865
2	Mahachon	11	Mr. Narong Puithiwong	35,744
3	Prachathipat	14	Mr. Sanee Surin	2,824
4	Chatthai	1	Mr. Somchao Tungsattayabun	920
5	Chatprachathipatai	15	Mr. Pornchai Pornprateepkul	714
6	Kwan Whang Mai	10	Mr. Sorradeth Manameenguentong	0

*Source: Office of the Election Commission of Thailand<sup>1</sup>*

---

<sup>1</sup> Office of the Election Commission of Thailand, “The General Election Result for the House of Representatives on 6 February, 2548”  
<http://203.185.151.120/ect48/ReportCandi.aspx> (in Thai)



Appendix 4: Village Regulations



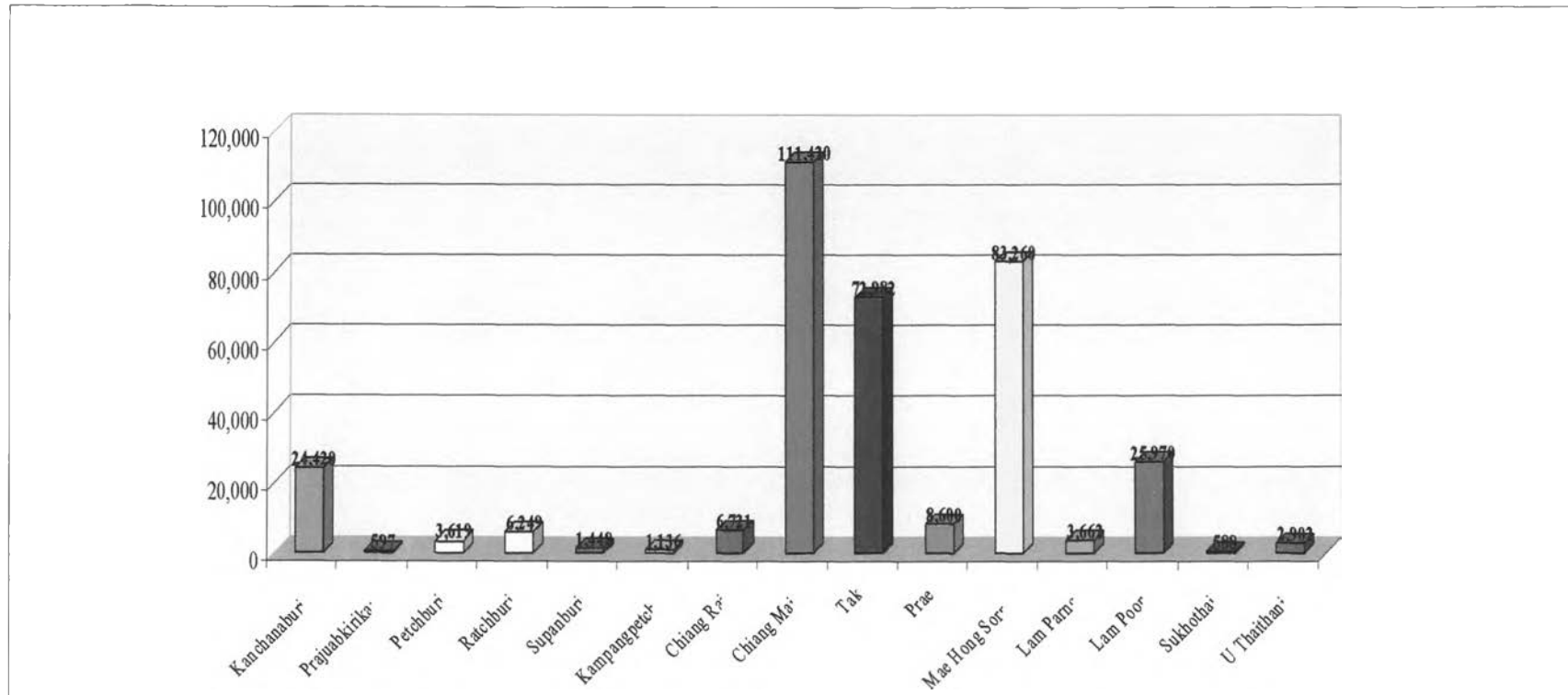
Prohibition	Fine
Shooting in the village	Fine 500 baht
Theft	Fine at least 100 baht
Argument	Fine 1000 baht
Violating customs	Fine 2000 baht
Selling drugs	Fine at least 500 baht and send to police
Deforesting in Nong Tao	Fine at least 1000 baht and send to police
Shocking or poisoning animals	Fine at least 500 baht and send to police
Outsiders hunting wild animals in Nong Tao	Fine at 200 baht and send to police
Outsiders living in Nong Tao without permission	Send to police
Selling illegal goods	Send to police
Destroying government assets	Send to police
Gambling	Send to police

Before World War II, the village rules were traditional, rooted in old beliefs and customs. They are closely related to the activities in their life, for example, how to use natural resources, how to show respect to the elderly and nature. Those who violated the regulations were disregarded by the other villagers.

Unmarried couples cannot sleep under the same roof, and they are strictly prohibited from premarital affairs. If they break the rule, the villagers punish them and they need to hold a ceremony to ask for forgiveness from the spirits.

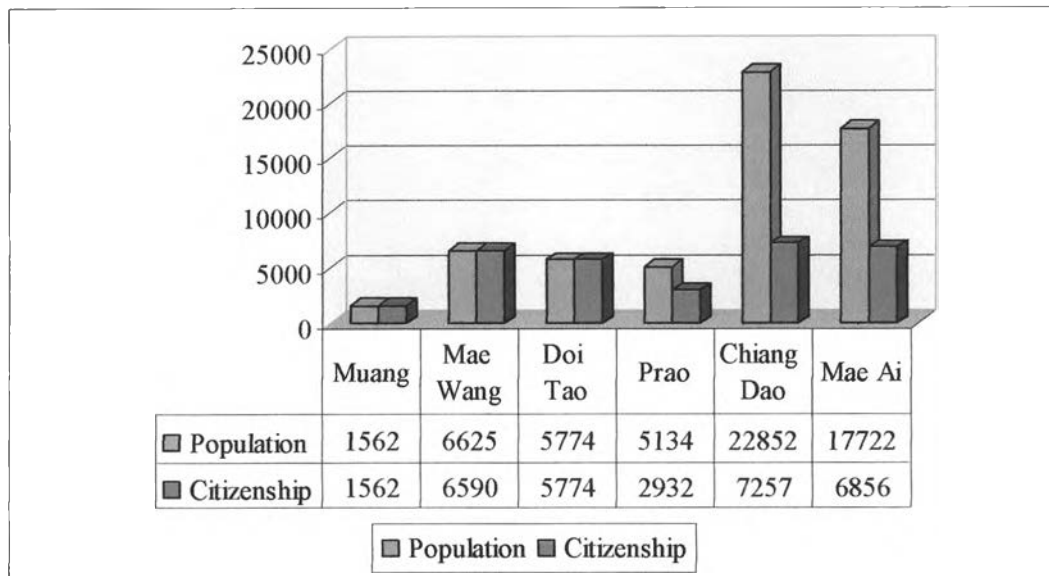
Since the village has been open to the world outside, old belief and custom were displaced by modernized thought and values. In 1985, the government instructed the Nong Tao villagers how to set the village rules in order to extend state influence over the village. Consequently, the modernized rules were set to organize the village, for example, by fining violators, which the villagers find easy to apply.

**Appendix 4: Number of Karens by Province**



Source: Center for the Coordination of Non-Governmental Tribal Development Organizations (CONTO) and World Concern

**Appendix 5: Karen Population and Citizenship Acquisition**



*Source:* Center for the Coordination of Non-Governmental Tribal Development Organizations (CONTO) and World Concern

## BIOGRAPHY

Chinatsu Masuda was born on June 17, 1979 in Tokyo, Japan. She graduated from the Department of English and American Literature, the Faculty of Literature in Gakushuin University in 2003 and received a Bachelor of Arts. With strong interest in the Thai Studies, she joined the Thai Studies Program at the Department of Thai Studies, the Faculty of Arts in Chulalongkorn University in 2003.

