

REFERENCES



- Amartya, Sen; 1973; On economic equity; Claredon Press Oxford.
- Bonsu, W. K, Nsowak-Nkurmah, N.N, and Ward, P.M; 2000; A profile of health inequalities in Ghana. Ministry of Health, Ghana, Accra, pp. 1-3.8-67.
- Cam Donaldson, and Karen Gerard; 1993; Economics of health care financing: the invisible hand, Macmillan, pp. 69-84.
- Ghana Statistical Services; 1998; Demographic and health survey . Accra, pp. 81-102.
- Government of Ghana 2000; The Health of the Nation. Ministry of Health, Accra.
- Gupta, Sanjeev, Verhoeven Marijn, and Tiogson Erwin; 1999; Does higher government spending buy better result in education and health care? A Working Paper of the International Monetary Fund.
- Health Policy and Planning: 2002 ; 17 (Suppl 1) : 1- 4 , 30-39; Oxford University Press.
- Hsiao, William, and Li K.T; 2000; Health care financing in developing nations. Harvard University.
- Kutzin, Joseph; 1995; Experience with organizational and financing reform of the health sector. Division of Strengthening of Health Services. World Health Organisation.
- Lavy, Victor, and Germain, Jean-Marc; 1994; Quality and cost in health care choice in developing countries. The World Bank , pp. 9-23.
- Ministry of Health; 1996. Health sector 5 year programme of work . Accra.

Ministry of Health; (Revised) 1999. Medium term health strategy towards vision 2020. Accra.

Ministry of Health; 2000. 2000 policy and budget statement. Accra.

Pornchaiwiseskul, Pongsa; 1993. Chulalongkorn journal of economics. pp. 160 –179.

Wagstaff, Adam, and van Doorslaer Eddy, 1992, Equity in the finance of health care:
Some international comparisons. Journal of Health economics .11, 1992. pp.
361-387 .

Wagstaff, Adam, and van Doorslaer Eddy, 1992, Equity in the delivery of health care:
Some international comparisons. Journal of Health economics 11.
1992: pp. 389-411.

World Bank;. 1998. Flagship Model 7. Provider payment Mechan.

Appendix 1

Table 1: weighted population on USMR distance and poverty, 1997 to 2001

Region	1997	1998	1999	2000	2001
UWR	839274	853663	8682999	885735	900793
UER	1385791	1401119	1416616	1430170	1445902
NR	2576145	2649296	2724526	2798855	2877223
BAR	1765492	1810186	1856011	1919235	1967216
ASH	2524929	2612253	2702597	2805343	2900724
ER	1942463	1968677	1996432	2028221	2056617
VR	1454896	1482803	1511246	1533633	1562772
CR	1563162	1591525	1620432	1725909	1775960
WR	1604664	1652663	1702995	1805011	1842916
GAR	813397	841528	870632	1061523	1095492

Table 2: Weighted population on USMR, 1997 to 2001

Region	1997	1998	1999	2000	2001
UWR	774807	788091	801603	817699	831601
UER	1256258	1270153	1284202	1296489	1310750
NR	2605295	2679275	2755356	2830526	2909781
BAR	1958433	2008012	2058845	2128978	2182203
ASH	2305829	2385575	2468080	2561910	2649015
ER	1632437	1654468	1677793	1704509	1728372
VR	1382208	1408721	1435743	1457011	1484695
CR	1863467	1897280	1931740	2057481	2117148
WR	1710959	1762137	1815803	1924577	1964993
GAR	1254951	1298353	1432626	1637773	1690181

Table 3: Weighted population on poverty, 1997 to 2001

Region	1997	1998	1999	2000	2001
UWR	1037051	1054831	1072917	1094462	1113068
UER	1801675	1821603	1841751	1859373	1879826
NR	2248717	2312571	2378239	2443121	2511529
BAR	1355298	1389608	1424786	1473321	1510154
ASH	2652327	2744057	2838959	2946889	3047083
ER	2269707	2300338	2332769	2369914	2403093
VR	1530174	1559526	1589429	1612985	1643632
CR	1964642	2000291	2036622	2169189	2232096
WR	1003588	1033607	1065086	1128889	1152595
GAR	1621299	1677372	1735384	2115876	2183584

Appendix 2

Table 4: Expected budget of weighted population on U5MR, distance and poverty, 1997 to 2001

Region	1997	1998	1999	2000	2001
UWR	4047023383	4196807615	14045281752	9108701331	15523351737
UER	6682361037	6888229381	22914636404	14707546808	24917210514
NR	12422311070	13024561676	44070881406	28782787848	49583147125
BAR	8513300145	8899299249	30022120094	19736981014	33901003919
ASH	12175345828	12842448271	43716161295	28849508460	49988135584
ER	9366661247	9678479567	32293521560	20857768786	35441645160
VR	7015586705	7289809417	24445327494	15771531464	26931222513
CR	7537651347	7824312149	26211477082	17748855087	30605097737
WR	7737778956	8124877811	27546985914	18652323246	1758944818
GAR	3922244296	4137149297	14083008904	10916460609	18878589053

Table 5: Expected budget of weighted population on U5MR, 1997 to2000

Region	1997	1998	1999	2000	2001
UWR	3674926890	3809304014	12678633672	8215752957	1399404369
UER	5958463094	6139393948	20311701072	13026342016	22057671785
NR	12356980177	12950503381	43580348046	28439419419	48966602182
BAR	9288898067	9705896278	32653915424	21390694991	36722711602
ASH	10936603357	11530882972	39036617931	25740530544	44578353724
ER	7742689938	7997012398	26536977948	17125876870	29085521321
VR	6555846790	6809175955	22708563755	14639174437	24984852972
CR	8838471298	9170665695	30553545507	20672327376	35627948192
WR	8115120714	8517440081	28719823103	19336991953	33067446594
GAR	5952263615	6275701722	22659273148	16455356245	28442841466

Table 6: Expected budget of weighted population on poverty, 1997 to2000

Region	1997	1998	1999	2000	2001
UWR	4710627809	4887268638	16363813194	10540320037	17961919797
UER	8183801329	8439890555	28089828760	17906868263	30335331165
NR	10214415085	10714657449	36272193358	23528715387	40529324706
BAR	6156211469	6438363128	21730410068	14188960037	24369819957
ASH	12047741518	12713825113	43298947008	28380301924	49171725857
ER	10309756955	10657978094	35578693782	22823682461	38779451613
VR	6950553646	7225628849	24241653676	15534008108	26523794117
CR	8924053127	9267793368	31061939997	20890589872	36020028275
WR	4558627452	4788932252	16244369099	10871873020	18599789277
GAR	7364477236	7771637856	26467548804	20377147959	35237168159

Appendix 3

Equity ratios of poverty focused allocations

Table 7: Poverty 0.7 , U5MR 0.2 and Distance 0.1

Region	1997	1998	1999	2000	2001
UWR	0.83	0.77	0.8	0.98	1.49
UER	0.54	0.45	0.59	0.64	0.69
NR	0.63	0.61	0.89	0.61	0.40
BAR	0.86	0.71	2.04	0.99	0.87
ASH	0.77	0.70	0.43	0.72	0.66
ER	1.10	1.18	1.28	0.82	0.99
VR	1.48	1.36	0.82	1.49	1.38
CR	0.88	1.00	0.63	1.00	1.17
WR	1.14	1.14	0.98	1.05	1.11
GAR	4.50	5.37	3.20	4.08	3.77

Table 8: Poverty 0.5 , U5MR 0.3 and Distance 0.2

Region	1997	1998	1999	2000	2001
UWR	0.91	0.84	0.87	1.07	1.63
UER	0.59	0.50	0.65	0.71	0.76
NR	0.65	0.63	0.92	0.63	0.42
BAR	0.82	0.68	1.95	0.94	0.83
ASH	0.74	0.68	0.42	0.71	0.64
ER	1.15	1.23	1.33	0.85	1.03
VR	1.48	1.36	0.82	1.50	1.38
CR	0.90	1.02	0.65	1.02	1.20
WR	1.04	1.04	0.89	0.96	1.00
GAR	3.47	4.13	2.47	3.15	2.92

Table 9: Poverty 0.8 , U5MR 0.2

Region	1997	1998	1999	2000	2001
UWR	0.80	0.74	0.76	0.93	1.42
UER	0.52	0.43	0.56	0.61	0.65
NR	0.62	0.60	0.88	0.60	0.40
BAR	0.88	0.73	2.09	1.01	0.89
ASH	0.79	0.72	0.44	0.75	0.67
ER	1.09	1.17	1.27	0.81	0.98
VR	1.49	1.37	0.82	1.50	1.38
CR	0.85	0.97	0.62	0.97	1.14
WR	1.21	1.21	1.04	1.11	1.16
GAR	5.09	6.07	3.62	4.61	4.26

Table 10: Poverty 065 , U5MR 0.3 and Distance 0.05

Region	1997	1998	1999	2000	2001
UWR	0.84	0.79	0.81	0.99	1.51
UER	0.55	0.46	0.60	0.65	0.70
NR	0.63	0.62	0.89	0.61	0.41
BAR	0.85	0.70	2.01	0.97	0.86
ASH	0.78	0.71	0.43	0.74	0.67
ER	1.13	1.21	1.31	0.84	1.01
VR	1.49	1.37	0.83	1.51	1.39
CR	0.86	0.98	0.62	0.98	1.15
WR	1.13	1.13	0.97	1.04	1.08
GAR	4.01	4.77	2.85	3.63	3.36

Table 11: Poverty 0.9 , U5MR 0.05 and Distance 0.05

Region	1997	1998	1999	2000	2001
UWR	0.77	0.72	0.74	0.90	1.38
UER	0.50	0.42	0.84	0.59	0.63
NR	0.62	0.60	0.87	0.59	0.39
BAR	0.91	0.75	2.16	1.04	0.91
ASH	0.78	0.71	0.43	0.73	0.66
ER	1.05	1.12	1.22	0.78	0.94
VR	1.47	1.35	0.81	1.47	1.36
CR	0.87	0.99	0.63	0.99	1.16
WR	1.26	1.25	1.07	1.50	1.20
GAR	6.73	8.02	4.78	6.08	5.62

Appendix

Equity ratios of U5MR focused allocations

Table 12: U5MR 0.9, Poverty 0.05, and Distance 0.05

Region	1997	1998	1999	2000	2001
UWR	1.09	1.01	1.05	1.29	1.97
UER	0.73	0.62	0.80	0.88	0.94
NR	0.63	0.66	0.96	0.66	0.44
BAR	0.73	0.60	1.74	0.85	0.75
ASH	0.77	0.70	0.43	0.74	0.67
ER	1.37	1.47	1.60	1.03	1.24
VR	1.56	1.43	0.86	1.59	1.47
CR	0.83	0.94	0.60	0.95	1.11
WR	0.91	0.91	0.78	0.85	0.88
GAR	2.04	2.43	1.45	1.87	1.73

Table 13: U5MR 0.5, Poverty 0.3 and Distance 0.2

Region	1997	1998	1999	2000	2001
UWR	0.99	0.92	0.95	1.16	1.78
UER	0.65	0.55	0.71	0.78	0.84
NR	0.66	0.65	0.94	0.64	0.43
BAR	0.78	0.64	1.85	0.90	0.79
ASH	0.74	0.68	0.42	0.71	0.69
ER	1.22	1.30	1.42	0.91	1.10
VR	1.50	1.38	0.83	1.53	1.41
CR	0.88	1.00	0.64	1.01	1.19
WR	0.97	0.97	0.83	0.90	0.94
GAR	2.71	3.23	1.93	2.47	1.29

Table 14: U5MR 0.8 and Poverty 0.2

Region	1997	1998	1999	2000	2001
UWR	1.01	0.94	0.97	1.20	1.83
UER	0.67	0.57	0.74	0.81	0.86
NR	0.66	0.65	0.94	0.64	0.43
BAR	0.76	0.62	1.80	0.87	0.77
ASH	0.79	0.71	0.44	0.75	0.68
ER	1.32	1.41	1.53	0.99	1.19
VR	1.55	1.43	0.86	1.58	1.46
CR	0.82	0.93	0.59	0.94	1.10
WR	0.96	0.96	0.83	0.89	0.93
GAR	2.29	2.73	1.63	2.09	1.93

Table 15: U5MR 0.7, Poverty 0.2 and Distance 0.1

Region	1997	1998	1999	2000	2001
UWR	1.02	0.95	0.98	1.21	1.85
UER	0.68	0.57	0.74	0.82	0.87
NR	0.67	0.65	0.94	0.65	0.44
BAR	0.76	0.63	1.80	0.88	0.77
ASH	0.76	0.69	0.43	0.73	0.66
ER	1.29	1.38	1.50	0.97	1.16
VR	1.53	1.41	0.85	1.56	1.44
CR	0.85	0.96	0.61	0.97	1.14
WR	0.95	0.95	0.81	0.88	0.92
GAR	2.36	2.18	1.68	2.68	2.00

Table 16: U5MR 0.065, Poverty 0.3 and Distance 0.05

Region	1997	1998	1999	2000	2001
UWR	0.97	0.90	0.93	1.15	1.75
UER	0.64	0.54	0.70	0.77	0.82
NR	0.66	0.64	0.93	0.64	0.42
BAR	0.78	0.64	1.84	0.90	0.79
ASH	0.78	0.70	0.43	0.74	0.67
ER	1.26	1.35	1.47	0.94	1.14
VR	1.53	1.41	0.85	1.55	1.43
CR	0.84	0.95	0.61	0.95	1.13
WR	0.99	0.99	0.85	0.92	0.96
GAR	2.56	3.05	1.82	2.34	2.16

Table 17 : Parttern of Gini coefficients of U5MR lead budget allocation

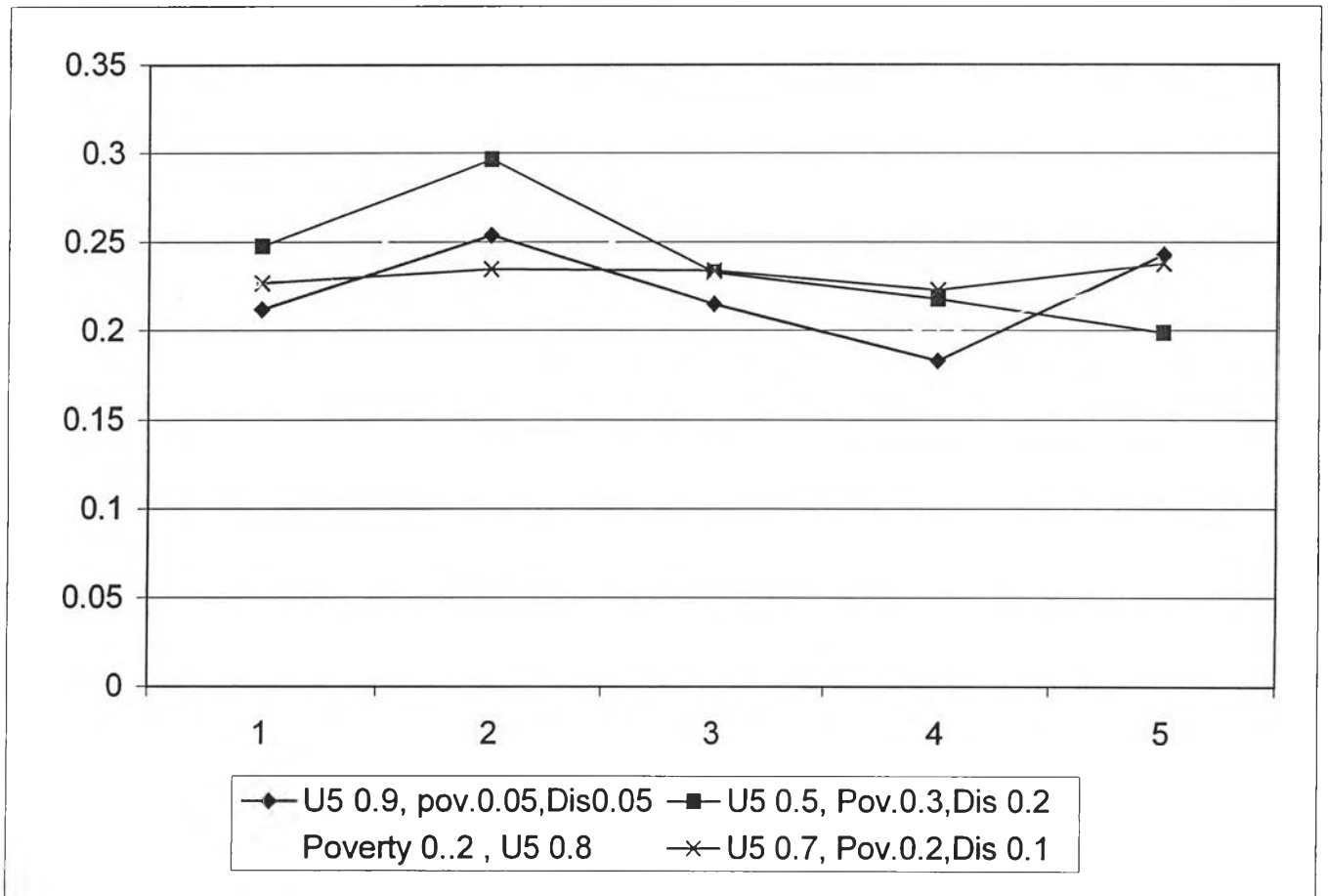


Table 18: Parttern of Gini coefficients of poverty lead budget allocation

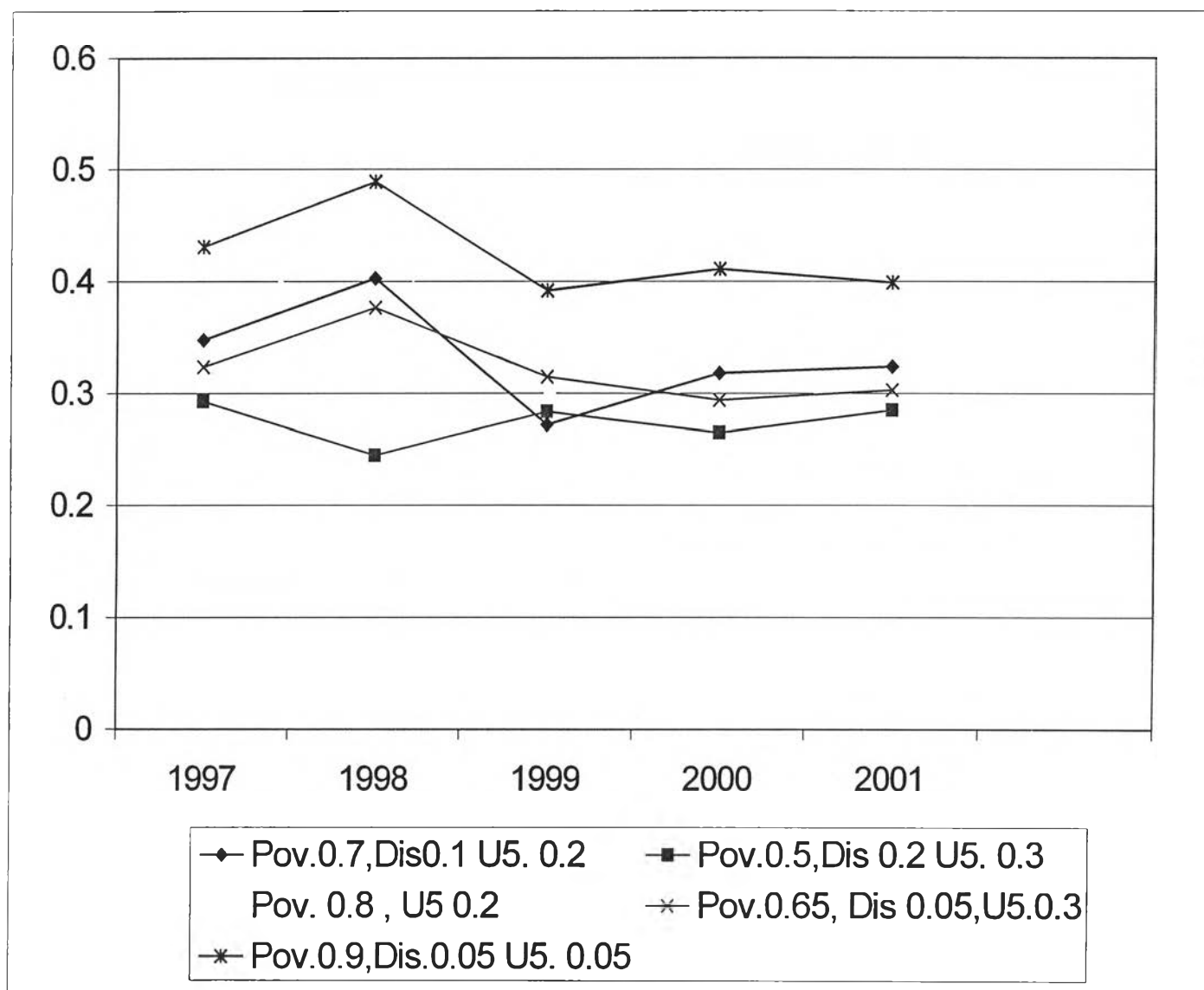


Table 19: Gini coefficients of poverty focused allocations

Allocation measure	1997	1998	1999	2000	2001
Poverty,0.7, U5 . 0.2, Dis . 0.1	0.348	0.403	0.272	0.318	0.324
Poverty 0.5, U5 0.3,Dis 0.2	0.293	0.345	0.284	0.265	0.285
Poverty 0.8 , U5 0.2	0.376	0.429	0.298	0.347	0.345
Poverty 0.65, U5 0.3, Dis 0.05	0.324	0.377	0.315	0.294	0.303
Poverty 0.9, U5 0.05, Dis 0.05	0.431	0.489	0.392	0.411	0.399

CURRICULUM VITAE

Name : Emmanuel Kwakye Kontor

Sex : Male

Date of Birth : 23rd September, 1969

Marital Status : Married

Nationality : Ghanaian

Educational Qualification :

1996 Bachelor of Science, Planning
Kwame Nkrumah University of Science & Technology
Kumasi, Ghana.

2002 Short course in Health Service Management
Galilee College, Tivon Israel.

Designation Planning officer

Address Policy Planning Monitoring & Evaluation Division
Ministry of Health, P. O. Box M44
Accra, Ghana.

