

REFERENCES

- Acquaah, G. 1992. **Practical protein electrophoresis for genetic research.** Portland Oregon, USA: Dioscorides Press.
- Alberts, B., Bray, D., Lewis, J., Raff, M., Roberts, K., and Watson, J. D. 1983. **Molecular biology of the cell.** New York: Garland.
- Agwanda, C. O., Lashermes, P., Trouslot, P., Combes, M. C., and Charrier, A. 1997. Identification of RAPD markers for resistance to coffee berry disease, *Colletotrichum kahawae*, in arabica coffee. **Euphytica** 97: 241-248.
- Alcivar-Warren, A., Overstreet, R. M., Dhar, A. K., Astrofsky, K., Carr, W. H., Sweeney, J., and Lotz, J. M. 1997. Genetic susceptibility of cultured shrimp (*Penaeus vannamei*) to infections hypodermal and hematopoietic necrosis virus and Baculovirus penaei: possible relationship with growth status and metabolic gene expression. **J. Invertebr. Pathol.** 70: 190-197.
- Allendorf, F. W., and Thorgaard, G. 1984. Polyploidy and the evolution of salmonid fishes. In B. J. Turner (ed.), **The evolutionary genetics of fishes**, pp. 1-53. New York: Plenum Press.
- Altschul, S. F., Madden, T. L., Schaffer, A. A., Zhang, J., Zhang, Z., Miller, W., and Lipman, D. J. 1997. Gapped BLAST and PSI-BLAST: a new generation of protein database search programs. **Nucleic Acids Res.** 25: 3389-3402.
- Amos, B., Schlotterer, C., and Tautz, D. 1993. Social structure of pilot whales revealed by analytical DNA profiling. **Science** 260: 670-672.
- Anderson, I. 1993. The veterinary approach to marine prawns. In Brown (ed.), **Aquaculture for veterinarians: Fish husbandry and medicine**, pp. 271-290. Oxford: Pergamon Press.
- Asia Shrimp Culture Council. 1991. **Asian Shrimp News** 2nd quarter.
- Asia Shrimp Culture Council. 1992. **Asian Shrimp News** 2nd quarter.
- Asia Shrimp Culture Council. 1996. **Asian Shrimp News** 4th quarter.

- Ausubel, F. M., Brent, R., Kingston, R. E., Moore, D. D., Seidman, J. G., Smith, J. A., and Struhl, K. 1995. **Short protocols in molecular biology**. 3rd ed. USA: John Wiley & Sons.
- Avise, J. C. 1989. Gene trees and organismal histories: a phylogenetic approach to population biology. *Evolution* 43: 1192-1208.
- Baily-Brook, J. H., and Mass, S. M. 1992. Penaeid taxonomy, biology and zoogeography. In A.W. Fast and L. J. Lester (eds.), **Marine shrimp culture: Principles and practices**, pp. 9-27. New York: Elsevier Science Publishers.
- Benzie, J. A. H. 1998. Penaeid genetics and biotechnology. *Aquaculture* 164: 23-47.
- Boonyaratpalin, S., Supamataya, K., Kasornchandra, J., Direkbusarakom, S., Aekpanithanpong, U., and Chantanachookhin, C. 1993. Non-occluded baculo-like virus the causative agent of yellow-head disease in the black tiger shrimp *Penaeus monodon*. *Fish. Pathol.* 28: 103-109.
- Bouchon, D., Souty-Grosset, C., and Raimond, R. 1994. Mitochondrial-DNA variation and markers of species identity in 2 penaeid shrimp species- *Penaeus monodon* Fabricius and *P. Japonicus* Bate. *Aquaculture* 127: 131-144.
- Boulding, E. G., Boom, J. D. G., and Beckenbach, A. T. 1993. Genetic variation in one bottlenecked and two populations of the Japanese scallop (*Patinopecten yessoensis*): empirical parameter estimates from coding regions of mitochondrial DNA. *Can. J. Fish. Aquat. Sci* 50: 1147-1157.
- Britten, R. J., and Kohne, D. 1968. Repeated sequences in DNA. *Science* 161: 529-540.
- Brown, P. T. H., Lange, F. D., Kranz, E., and Lorz, H. 1993. Analysis of single protoplasts and regenerated plants by PCR and RAPD technology. *Mol. Gen. Genet.* 237: 311-317.

- Burke, T. 1989. DNA fingerprinting and other methods for the study of mating success. **Trends Ecol. Evol.** 4: 139-144.
- Caetano-Anolles, G., Bassam, B. J., and Gresshoff, P. M. 1991. High resolution DNA amplification fingerprinting using very short arbitrary oligonucleotide primers. **Bol. Technology** 9: 553-557.
- Cann, R. L., and Wilson, A. C. 1983. Length mutations in human mitochondrial DNA. **Genetics** 104: 699-711.
- Cano, R. J., Polnar, H. N., Pleniasek, N. J., Acra, A., and Poinar, Jr., G. O. 1993. Amplification and sequencing of DNA from a 120-135-million-year-old weevil. **Nature** 363: 536-538.
- Casragnone-Sereno, P., Vanlerberghe-Masutti, F., and Leroy, F. 1994. Genetic polymorphism between and within *Meloidogyne* species detected with RAPD markers. **Genome** 37: 904-909.
- Cheng, H. H., Levin, I., Vallejo, R. L., Khatib, H., Dodgson, J. B., Crittenden, L. B., and Hillel, J. 1995. Development of a genetic map of the chicken with markers of high utility. **Poultry Science** 74: 1855-1874.
- Chou, H. Y., Huang, C. Y., Wang, C. H., Chiang, H. C., and Lo, C. F. 1995. Pathogenicity of a baculovirus infection causing white spot syndrome in cultured penaeid shrimp in Taiwan. **Dis. Aquat. Org.** 23: 165-173.
- Conner, P. J., Brown, S. K., and Weeden, N. F. 1998. Molecular marker analysis of quantitative traits for growth and development in juvenile apple trees. **Theor. Appl. Genet** 96: 1027-1035.
- Cruzan, M. B., Arnold, M. L., Carney, S. E., and Wolenberg, K. R. 1993. cpDNA inheritance in interspecific crosses and evolutionary inference in Louisiana irises. **Am. J. Bot.** 80: 344-350.
- Das, R. H., Bansal, O. B., Behera, A. K., Durgaprasad, Y., Kumar, M., and Bal, A. 1996. Long primers of RAPD mapping and fingerprinting of grape and pear. **Bio. Techniques** 20: 368-371.

- Davis, L. G., Dibner, M. D., and Battey, J. F. 1986. **Basic method in molecular biology**. New York: Elsevier Science.
- Dowling, T. E., Moritz, C., and Palmer, J. D. 1990. Nucleic acids: restriction site analysis. In D. M. Hillis and C. Moritz (eds.), **Molecular systematics**, pp. 250-317. Massachusetts, USA: Sinauer, Sunderland.
- Echt, C. S, Erdahl, L. A., and McCoy, T. J. 1992. Genetic segregation of random amplified polymorphic DNA in diploid cultivated alfafa. **Genome** 35: 84-87.
- Elich, H. A. 1989. **PCR technology: Principles and application for DNA amplification**. New York: Stockton Press.
- Faure, S., Noyer, J. L., Horry, J. P., Bakry, F., and Lanaud, C. 1994. A molecular marker-based linkage map of diploid bananas (*Musa Acuminata*). **Theor. Appl. Genet.** 87: 517-576.
- Fitzsimmons, N. N., Moritz, C., and Moore, S. S. 1995. Conservation and dynamics of microsatellite loci over 300 million years of marine turtle evolution. **Mol. Biol. Evol.** 12: 432-440.
- Flegel, T. W., and Pasharawipas, T. 1997. **Active viral accomodation a new concept for crustacean response to viral pathogens**. Shrimp Biotechnology in Thailand. National Center for Genetic Engineering and Biotechnology, Thailand.
- Francki, R. I. B., Fauquet, C. M., Knudson, D. L., and Brown, F. 1991. **Classification and nomenclature of viruses**, 5th report of the International committee on Taxonomy of viruses. New York: Springer-Verlag.
- Garcia, D. K., and Benzie, J. A. H. 1995. RAPD markers of potential use in penaeid prawn (*Penaeus monodon*) breeding programs. **Aquaculture** 130: 137-144.
- Garcia, D. K., Dhar, A. K., and Alcivar-Warren, A. 1996. Molecular analysis of a RAPD marker (B20) reveals two microsatellites and differential mRNA expression in *Penaeus vannamei*. **Mol. Mar. Biol. Biotech.** 5: 71-83.

- Garcia, D. K., Faggart, M. A., Rhoades, L. R., and Alcivar-Warren, A. 1994. Genetic diversity of cultured *Penaeus vannamei* shrimp using three molecular genetic techniques. **Mol. Mar. Biol. Biotech.** 3: 270-280.
- Hadjeb, N., and Berkowitz, G. A. 1996. Preparation of T-overhang vectors with high PCR-product cloning efficiency. **Biotechniques** 20: 20-22.
- Haley, S. D., Miklas, P. N., Stavely, J. R., Byrum, J., and Kelly, J. D. 1993. Identification and localization of molecular markers linked to the Lr9 leaf rust resistance gene of wheat. **Theor. Appl. Genet.** 88: 110-115.
- Hauswirth, W. W., and Laipis, P. J. 1982. Mitochondrial DNA polymorphism in a maternal lineage of Holstein cows. **Proc. Natl. Acad. Sci. USA** 79: 4686-4690.
- Hauswirth, W. W., Van De Walle, M. J., Laipis, P. J., and Olivo, P. D. 1984. Heterogeneous mitochondrial DNA D-Loop sequences in bovine tissue. **Cell** 37: 1001-1007.
- Hedgecock, D. 1977. Biochemical genetic markers for broodstock identification in aquaculture. **Proc. World. Maricult. Soc.** 8: 523-532.
- Hillis, D. M., Moritz, C., and Mable, B. K. 1996. **Molecular systematics**. 2nd ed. Sunderland, Massachusetts, USA: Sinauer Associates.
- Hoelzel, A. R., Lopez, J. V., Dover, G. A., and Obrien, S. J. 1994. Rapid evolution of a heteroplasmic repetitive sequence in the mitochondrial-DNA control region of carnivores. **J. Mol. Evol.** 39: 191-194.
- Huger, A. M., and Krieg, A. 1991. *Baculoviridae*: Nonoccluded baculoviruses. In J. R. Adams, J. R. Bonami (eds.), **Atlas of Invertebrate viruses**, pp. 287-319. Boca Raton: CRC Press.
- Hunter, R. L., and Markert, C. L. 1957. Histochemical demonstration of enzymes separated by zone electrophoresis in starch gels. **Science** 125:1294-1295.
- Jeffreys, A. J., Wilson, V., and Thein, S. L. 1985a. Hypervariable "minisatellite" regions in human DNA. **Nature** 314: 67-73.

- Jeffreys, A. J., Wilson, V., and Thein, S. L. 1985b. Individual-specific "fingerprints" of human DNA. **Nature** 316: 76-79.
- Johnson, S. L., Midson, C. N., Ballinger, E. W., and Postlethwait, J. H. 1994. Identification of RAPD primers that reveal extensive polymorphisms between Laboratory strains of zebrafish. **Genomic** 19: 152-156.
- Kamphampati, S., Black IV, W. C., and Rai, K. S. 1992. Random amplified polymorphic DNA of mosquito species and populations (Diptera: Culicidae): techniques, statistical analysis, and application. **J. Med Entomol.** 29: 939-945.
- Kasornchandra, J., and Boonyaratapalin, S. 1996. Red disease with white patches or white spot disease in cultured penaeid shrimp in Asia. In: Asian shrimp news 1996; 3rd quarter: 4.
- Kuhnlein, U., Zadworny, D., Dawe, Y., Fairfull, R. W., and Gavora, J. S. 1990. Assessment of inbreeding by DNA fingerprinting: Development of a calibration curve using defined strains of chickens. **Genetics** 125: 161-165.
- Landry, B. S., Kesseli, R. V., Farrara, B., and Michelmore, R. W. 1987. A genetic map of Lettuce (*Lactuca sativa* L.) with restriction fragment length polymorphism, isozyme, disease resistance and morphological markers. **Genetics** 116: 331-337.
- Lester, L. J. 1983. Developing a selective breeding program for penaeid shrimp mariculture. **Aquaculture** 33: 41-50.
- Lewonthin, R. C. 1991. Twenty-five years ago in genetics: electrophoresis in the development of evolutionary genetics: milestone or millstone? **Genetics** 128: 657-662.
- Li, B., Pilcher, K. Y., Wyman, T. E., and Machida, C. A. 1997. Rapid preparation and identification of insert-containing recombinant plasmid DNA. **BioTechniques** 23: 603-608.

- Limsuwan, C. 1992. **Handbook for cultivation of black tiger prawns**. Bangkok: Tansetaki (in Thai).
- Lynch, M., and Jarrel, P. E. 1993. A method for calibrating molecular clocks and its application to animal mitochondrial DNA. **Genetics** 135:1197-1208.
- Machado, E. G., Dennebouy, N., Suarez, M. O., Moknolou, J. C., and Monnerot, 1993. Mitochondrial 16s-ribosomal RNA gene of 2 species of shrimps sequence variability and secondary structure. **Crustaceana** 65: 279-286.
- Markert, C. L., and Moller, F. 1959. Multiple forms of enzymes: tissue, ontogenetic, and species-specific patterns. **Proc. Natl. Acad. Sci. USA** 45: 753-763.
- Micheli, M. R., Bova, R., Pascale, E., and Damrosio, E. 1994. Reproducible DNA fingerprinting with the random amplified polymorphic DNA (RAPD) method. **Nucleic Acids Res.** 22: 1921-1922.
- Michelmore, R. W., Paran, I., and Kesseli, R. V. 1991. Identification of marker linked to disease resistance genes by bulk segregant analysis: a rapid method to detect markers in specific genomic region using segregating populations. **Proc. Natl. Acad. Sci. USA** 88: 9828-9832.
- Moore, S. S., Whan, V., Davis, G., Byrne, K., and Preston, N. 1997. **6th genetics in Aquaculture**. In: Symposium conference abstracts, Stirling, Scotland.
- Morgan, R. N., Wilson, J. P., Hanna, W. W., and Ozias-Akins, P. 1998. Molecular markers for rust and pyricularia leaf spot disease resistance in pearl millet. **Theor. Appl. Genet.** 96: 413-420.
- Moritz, C., Dowling, T. E., and Brown, W. M. 1987. Evolution of animal mitochondrial DNA: relevance for population biology and systematics. **Ann. Rev. Ecol. Sys.** 18: 269-292.
- Nakamura, Y., Leppert, M., Connell, P. O., Wolff, R., Holm, T., Culver, M., Martin, C., Fujimoto, E., Hoff, M., Kumlin, E., and White, R. 1987. Variable number of tandem repeat (VNTR) markers for human gene mapping. **Science** 235: 1616-1622.

- Novy, R. G., Kobak, C., Goffreda, J., and Vorsa, N. 1994. RAPDs identify varietal misclassification and regional divergence in cranberry [*Vaccinium macrocarpon* (Alt.) Pursh]. **Theor. Appl. Genet.** 88: 1004-1010.
- Paran, I., and Michelmore, R. W. 1993. Development of reliable PCR-based markers linked to downy mildew resistance genes in lettuce. **Theor. Appl. Genet.** 85: 985-993.
- Park, L. K., and Moran, P. 1995. Developments in molecular genetic techniques in fisheries. In G. R. Carvalho and T. J. Pitcher (eds.), **Molecular genetics in Fisheries**, pp. 1-28. New York: Chapman & Hall Press.
- Pasharawipas, T., Flegel, T. W., Sriuvairatana, S., and Morrison, D. J. 1997. **Latent yellow-head infections in *Penaeus monodon* and implications regarding disease tolerance or resistance.** In T. W. Flegel, P. Menasveta and S. Paisamrat (eds.). **Shrimp Biotechnology in Thailand.** National Center for Genetic Engineering and Biotechnology, Thailand, 45-53.
- Piper, W. H., and Parker, R. P. 1992. Use of fragment-sharing estimates DNA fingerprinting to determine in a tropical wren. **Mol. Ecol.** 1: 69-78.
- Pongsomboon, S. 1996. **Detection of genetic variation in populations of black tiger prawn *Penaeus monodon* by DNA fingerprinting.** Master's Thesis, Department of Biochemistry, Graduate School, Chulalongkorn University.
- Provenzano, A. J. 1985. The Biology of crustacea. In D. E. Bliss (ed.), **Economic aspects: Fisheries and culture**, pp. 15-19. New York: Academic Press.
- Quiors, C. F., Hu, J., This, T., Chevere, A. M., and Delseny., M. 1991. Development and chromosomal localization of genomic-specific markers by polymerase chain reaction in *Brassica*. **Theor. Appl. Genet.** 82: 627-632.
- Rolfs, A., Schuller, I., Finckn, U., and Weber-Rolfs. I. 1992. **PCR: Clinical diagnostics and research.** New York: Springer-Verlag.

- Ronald, P. C., Albano, B., Tabien, R., Abenes, L., Wu, K., McCouch, S., and Tanksley, S. D. 1992. Genetic and physical analysis of the rice bacterial blight disease resistance locus, Xa 21. *Mol. Gen. Genet.* 236: 113-120.
- Rosenberry, B. 1997. **World shrimp farming. 1996.** Shrimp News International, SanDiego.
- Saiki, R. K., Gelfand, D. H., Stoffel, S., Scharf, S. J., Higuchi, R. T, Hom, G., Mullis, K. B., and Erlich H. A. 1988. Primer-directed enzymatic amplification of DNA with a thermostable DNA polymerase. *Science* 239: 487-491.
- Schachermayr, G., Siedler, H., Gale, M. D., and Winzeler, H. 1994. Identification and localization of molecular markers linked to the *Lr9* leaf rust resistance gene of wheat. *Theor. Appl. Genet.* 88: 110-115.
- Scopes, R. K. 1987. **Protein purification: principles and practice.** 2nd ed. New York: Springer-Verlag.
- Sodsuk, S. 1996. **Genetic population structure of *Penaeus monodon* Fabricius using allozyme and mitochondrial DNA analysis.** Ph. D. thesis, University of Stirling, Scotland.
- Spann, K. M., Vickers, J. E., and Laster, R. J. G. 1995. Lymphoid organ virus of *Penaeus monodon* from Australia. *Dis. Aquat. Org.* 23: 127-134.
- Subasinghe, R. P., and Shariff, M. 1994. **Diseases in aquaculture: the current issues.** In: seminar on disease in aquaculture (1993: Kuala Lumpur, Malaysia).
- Sunden, S. L. F. 1991. **Population structures, evolutionary relationships and genetic effects of domestication in American penaeid shrimp.** Ph. D. thesis. Texas A&M University.
- Supangul, P. 1998. **Genetic variation and population structure of the black tiger prawn *Penaeus monodon* in Thailand determined by microsatellite markers.** Master's Thesis, Department of Biochemistry, Graduate School, Chulalongkorn University.

- Taggart, J. B., and Ferguson, A. 1990. Hypervariable minisatellite DNA single locus probes for the Atlantic salmon, *Salmo salar*, L. **J. Fish. Biol.** 37: 991-993.
- Takahashi, Y., Itami, T., Kondo, M., Maeda, M., Fujii, R., Tomonaga, S., Supamattaya, K., and Boon-yaratpalin, S. 1994. Electron microscopic evidence of bacilliform virus infection in kuruma shrimp (*Penaeus japonicus*). **Fish Pathol.** 29: 121-125.
- Tassanakajon, A., Pongsomboon, S., Rimphanitchayakit, V., Jarayabhand, P., and Boonsaeng, V. 1997. Random amplified polymorphic DNA (RAPD) markers for the black tiger prawn (*Penaeus monodon*) in Thailand. **Mol. Mar. Biol. Biotech.** 6: 110-115.
- Tassanakajon, A., Tiptawonnukul, A., Supungul, P., Rimphanitchayakit, V., Cook, D., Jarayaphand, P., Klinbunga, S., and Boonsaeng, V. 1998. Isolation and characterization of microsatellite markers in the black tiger prawn *Penaeus monodon*. **Mol. Mar. Biol. Biotech.** 7: 55-61.
- Tongchuea, W. 1996. **Detection of white spot and yellow-head viruses in *Penaeus monodon* by amplification of conserved sequences.** Master's Thesis, Department of Biochemistry, Graduate Studies, Mahidol University.
- Upholt, W. B., and Dawid, I. B. 1977. Mapping of mitochondrial DNA of individual sheep and goats: rapid evolution in the D- Loop region. **Cell** 11: 571-583.
- Voet, D., and Voet, J. G. 1995. **Biochemistry.** 2nd ed. New York: John Wiley & Sons.
- Wang, C. H., Lo, C. F., Leu, J. H., Chou, C. M., Yeh, P. Y., Chou, H. Y., Tung, M. C., Chang, C. F., Su, M. S., and Kou, G. H. 1995. Purification and genomic analysis of baculovirus associated with white spot syndrome (WSV) of *Penaeus monodon*. **Dis. Aquat. Org.** 23: 239-242.
- Weber, J. L. 1991. Human DNA polymorphisms based on length-variations in simple sequence tandem repeats. In K. E. Davies (ed.), **Genome analysis**

- volume 1: genetic and physical mapping, pp. 159-181. Cold Spring Harbor: Cold Spring Harbor Laboratory Press.
- Wei, J. Z., and Wang, R. R. C. 1995. Genome and species specific markers and genome relationship of diploid perennial species in Triticeae base on RAPD analyses. *Genome* 38: 1230-1236.
- Welsh, J., and McClelland, M. 1990. Fingerprinting genome using PCR with arbitrary primers. *Nucllc Acid Res.* 18: 6531-6535.
- Welsh, J., Petersen, C., and McClelland, M. 1991. Polymorphisms generated by arbitrarily primed PCR in the mouse: application to strain identification and genetic mapping. *Nuclelc Acids Res.* 19: 303-306.
- Williams, G. K., Kubelik, A. R., Livak, K. L., Rafalski, J. A., and Tingey, S. V. 1990. DNA polymorphisms amplified by arbitrary primers are useful as genetic markers. *Nuclelc Acids Res.* 18: 6531-6535.
- Wongteerasupaya, C., Sriurairatana, S., Vickers, J. E., Anutara, A., Boonsaeng, V., Panyim, S., Tassanakajon, A., Withyachumnukul, B., and Flegel, T. W. 1995a. Yellow-head virus of *Penaeus monodon* is an RNA virus. *Dis. Aquat. Org.* 22: 45-50.
- Wong teerasupaya, C., Vickers, J. E., Sriurairatana, S., Nash, G. L., Akarajamorn, A., Boonsaeng, V., Panyim, S., Tassanakajon, A., Withyachumnukul, B., and Flegel, T. W. 1995b. A non-occluded, systemic baculovirus that occurs in cells of ectodermal and mesodermal origin and caused high mortality in the black tiger prawn *Penaeus monodon*. *Dis. Aquat. Org.* 21: 67-77.
- Wongteerasupaya, C., Wongwisansri, S., Boon-saeng, V., Panyim, S., Pratanpipat, P., Nash, G. L., Withyachumnukul, B., and Flegel, T.W. 1996. DNA fragment of *Penaeus monodon* baculovirus PmNOB II give positive in *situ* hybridization with white spot viral infections in 6 penaeid shrimp species. *Aquaculture* 143: 23-30.

- Wu, C., and Li, W. H. 1985. Evidence for higher rates of nucleotide substitution in rodents than in man. **Proc. Natl. Acad. Sci. USA** 82: 1741-1745.
- Yang , Y. J., Lin., Y. S., Wu, J. L., and Hni, C. F. 1994. Variation in mitochondrial DNA and population structure of the Taipei tree frog *Rhacophorus taipeianus* in Taiwan. **Mol. Ecol.** 3: 219-228.
- Zullo, S., Sieu, L. C., Slightom, J. L., Hadler, H. I., and Eisenstadt, J. M. 1991. Mitochondrial D-Loop sequences are integrated in the rat nuclear genome. **J. Mol. Biol.** 221: 1223-1235.



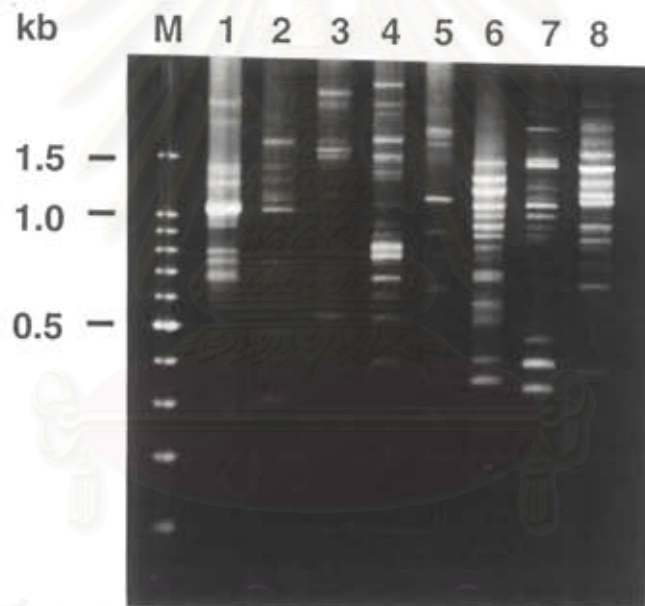
สถาบันวิทยบริการ
จุฬาลงกรณ์มหาวิทยาลัย

APPENDIX 1

Amplification patterns of *P. monodon* genomic DNA using various RAPD primers from Operon Technologies

Appendix 1.1

Using Kit A primers

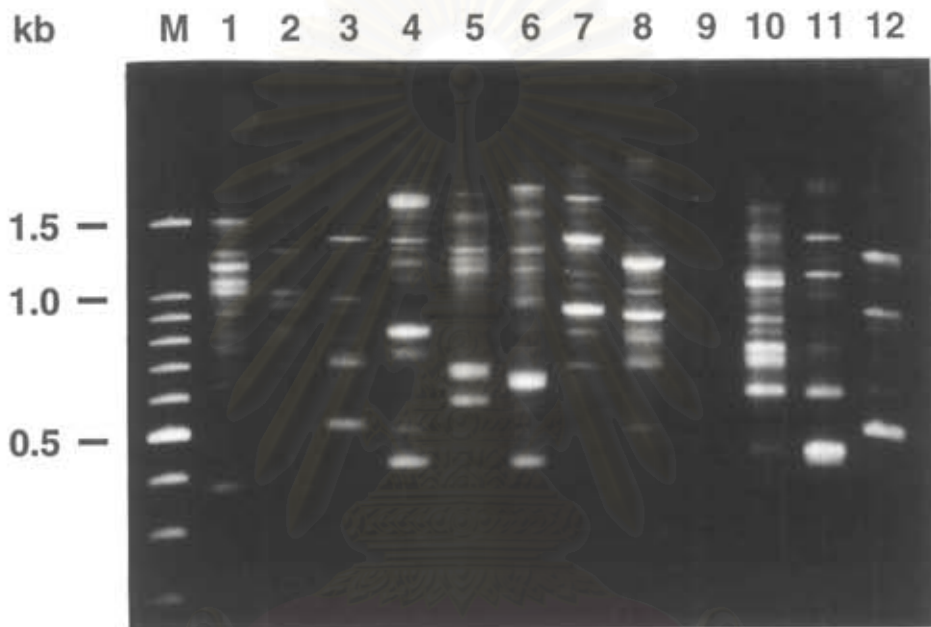


lane M : a 100 bp DNA ladder

lanes 1-8 : results from primers OPA-13 to OPA-20, respectively

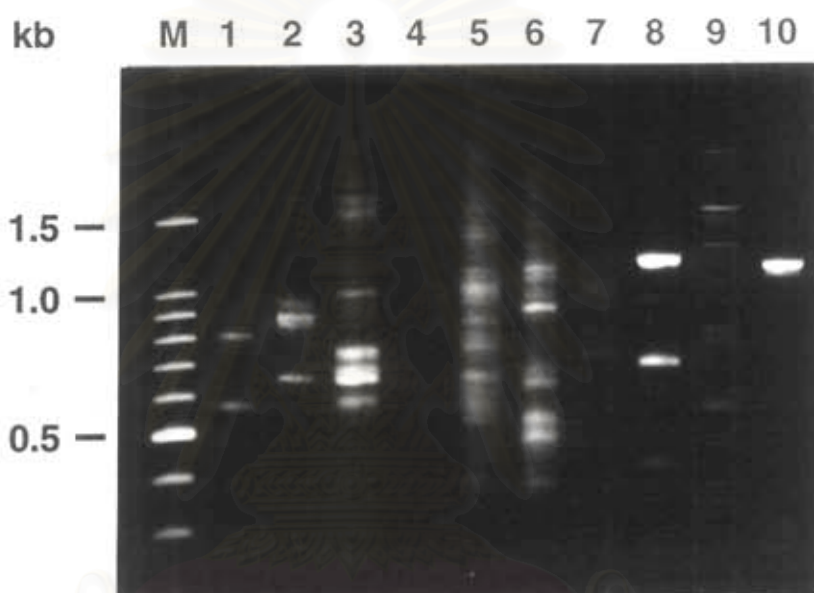
Appendix 1.2

Using Kit B primers



lane M : a 100 bp DNA ladder

lanes 1-12 : results from primers OPB-01 to OPB-12, respectively

Appendix 1.2 (continued)

lane M : a 100 bp DNA ladder

lanes 1-8 : results from primers OPB-13 to OPB-20, respectively

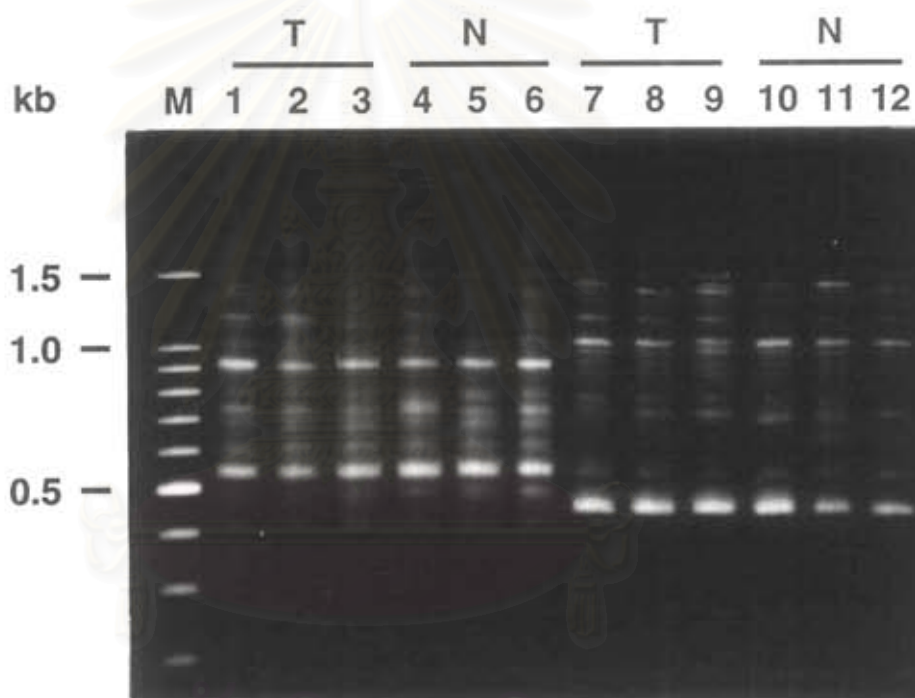
lane 9 : results from the primer OPM-09

lane 10 : results from the primer OPZ-09

APPENDIX 2

RAPD patterns of normal and viral tolerance *P. monodon* using the selected primers

Appendix 2.1



lane M : a 100 bp DNA ladder

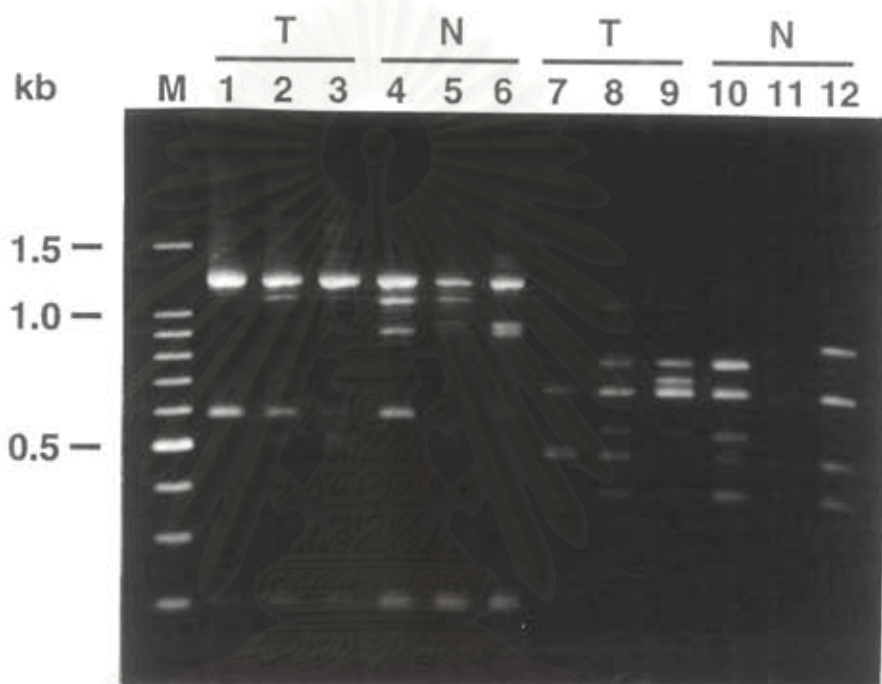
lanes 1-6 : results from the using of primer 101

lanes 7-12 : results from the using of primer 174

T : tolerance *P. monodon*

N : normal *P. monodon*

Appendix 2.2



lane M : a 100 bp DNA ladder

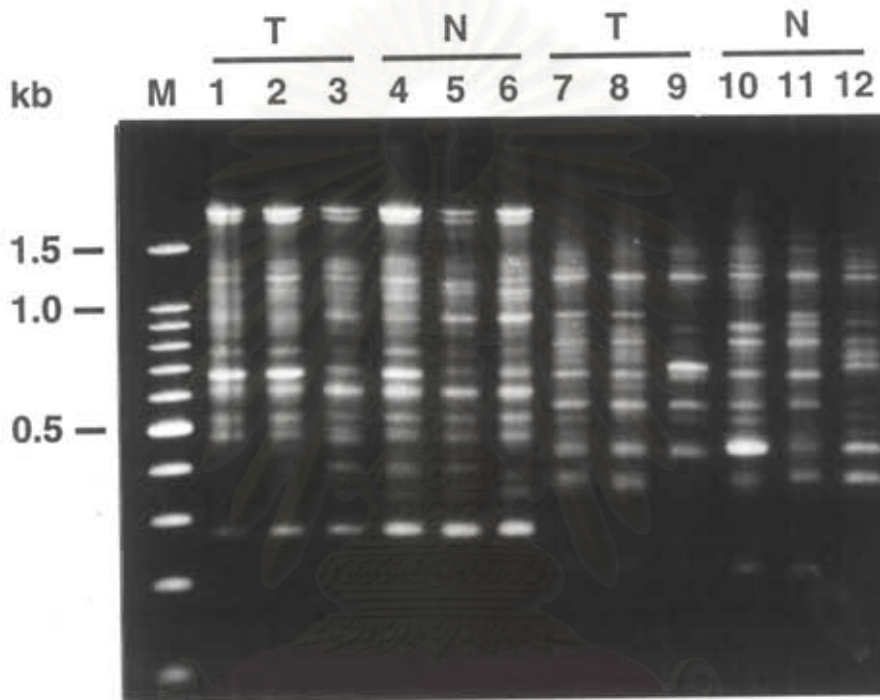
lanes 1-6 : results from the using of primer 428

lanes 7-12 : results from the using of primer 268

T : tolerance *P. monodon*

N : normal *P. monodon*

Appendix 2.3



lane M : a 100 bp DNA ladder

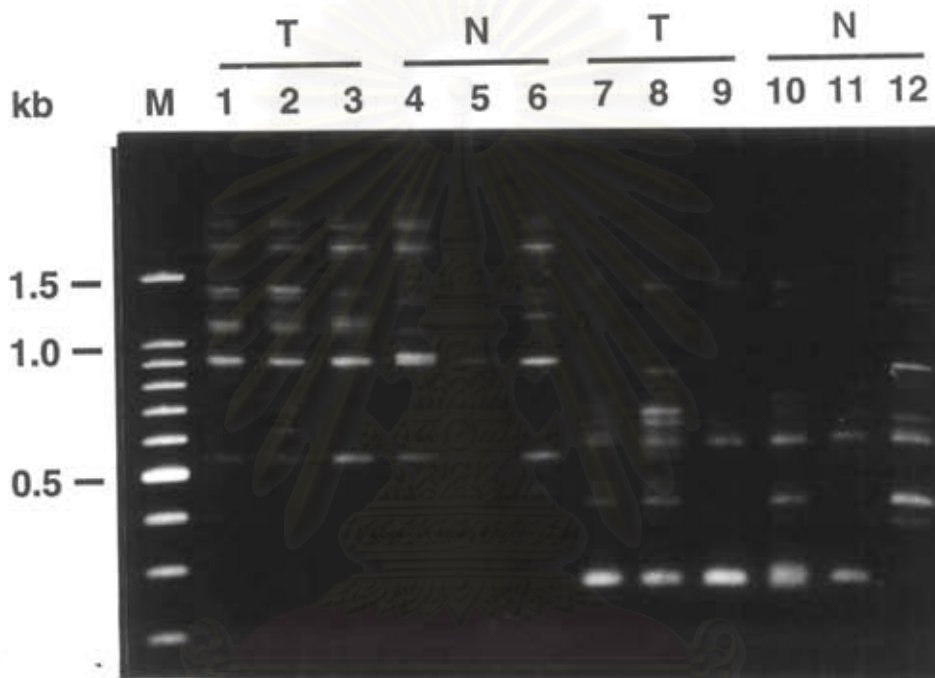
lanes 1-6 : results from the using of primer 456

lanes 7-12 : results from the using of primer 457

T : tolerance *P. monodon*

N : normal *P. monodon*

Appendix 2.4



lane M : a 100 bp DNA ladder

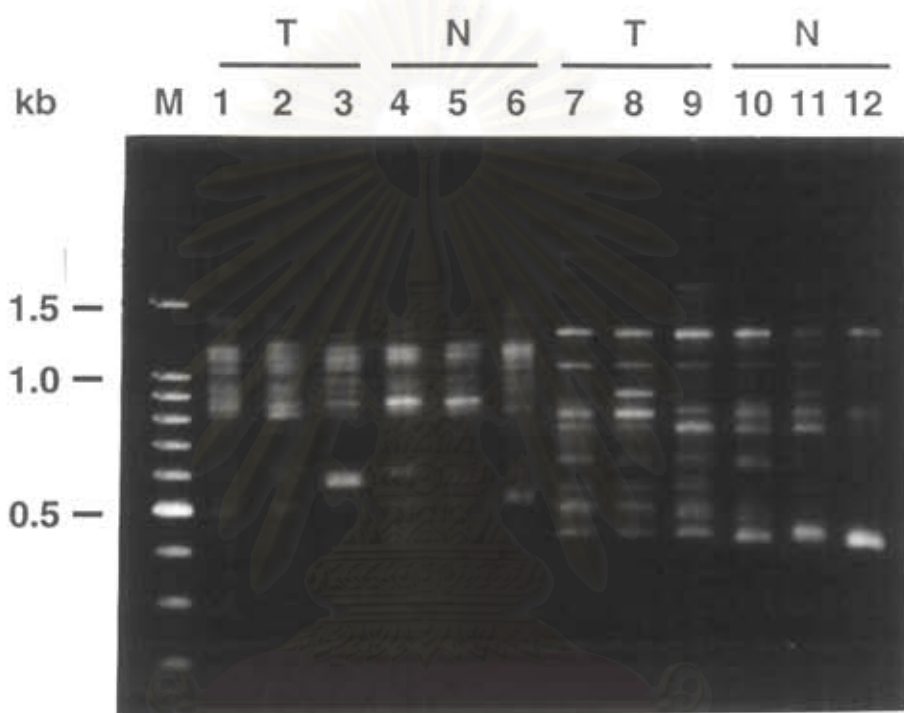
lanes 1-6 : results from the using of primer OPA-05

lanes 7-12 : results from the using of primer OPA-08

T : tolerance *P. monodon*

N : normal *P. monodon*

Appendix 2.5



lane M : a 100 bp DNA ladder

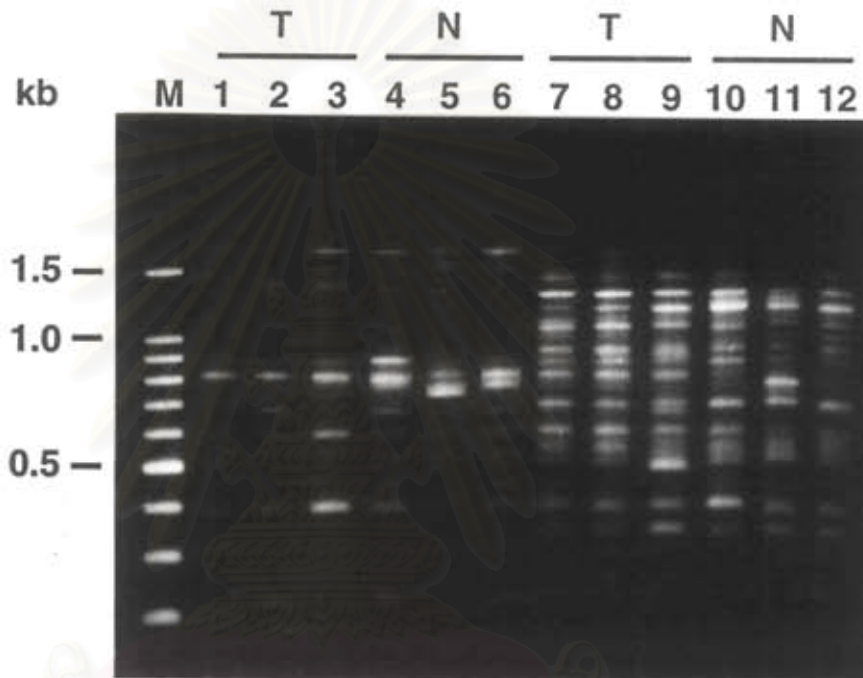
lanes 1-6 : results from the using of primer OPA-09

lanes 7-12 : results from the using of primer OPA-10

T : tolerance *P. monodon*

N : normal *P. monodon*

Appendix 2.6



lane M : a 100 bp DNA ladder

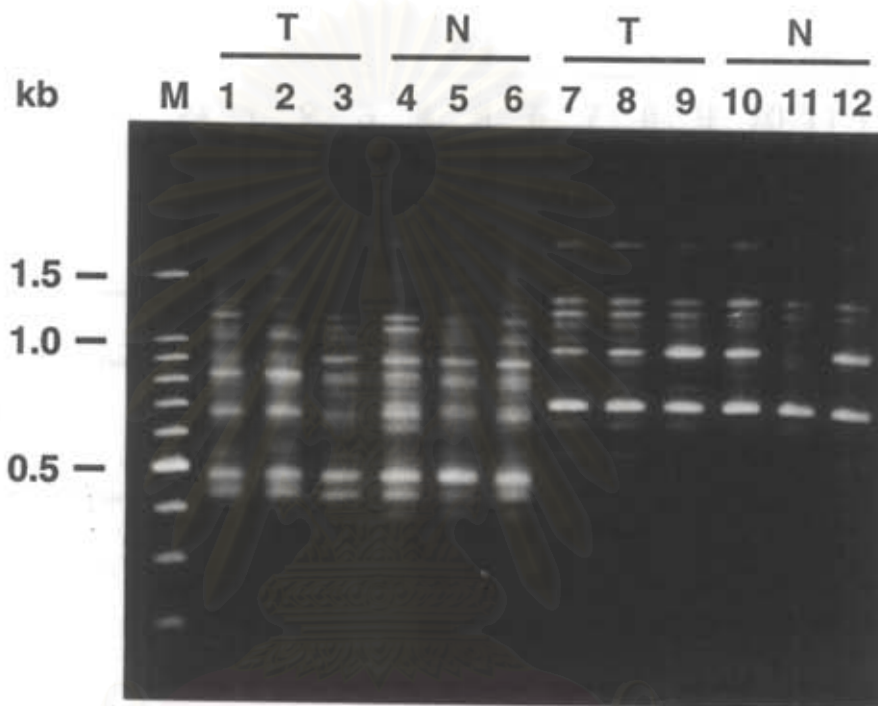
lanes 1-6 : results from the using of primer OPA-16

lanes 7-12 : results from the using of primer OPA-18

T : tolerance *P. monodon*

N : normal *P. monodon*

Appendix 2.7



lane M : a 100 bp DNA ladder

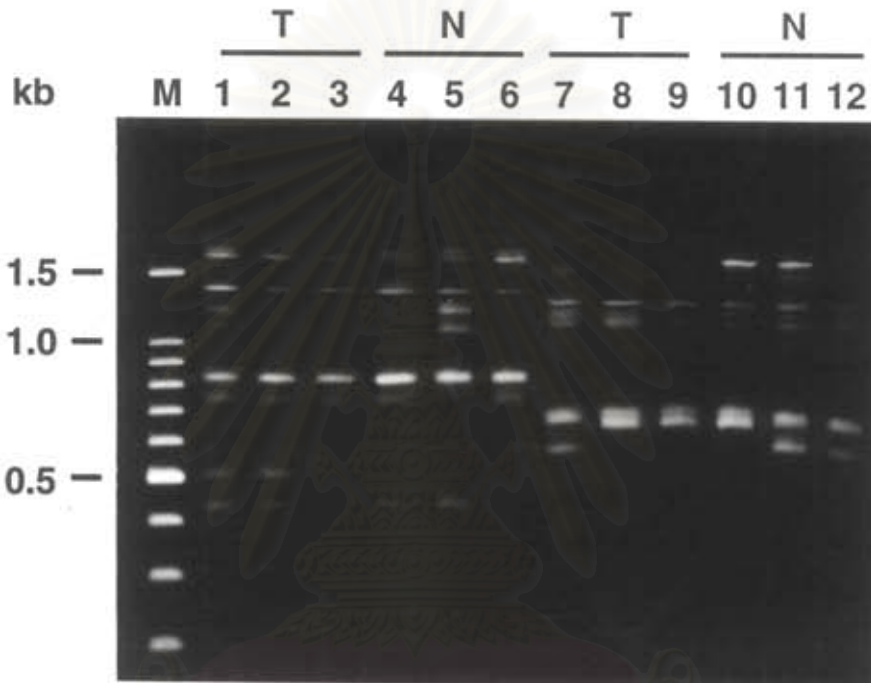
lanes 1-6 : results from the using of primer 459

lanes 7-12 : results from the using of primer OPA-01

T : tolerance *P. monodon*

N : normal *P. monodon*

Appendix 2.8



lane M : a 100 bp DNA ladder

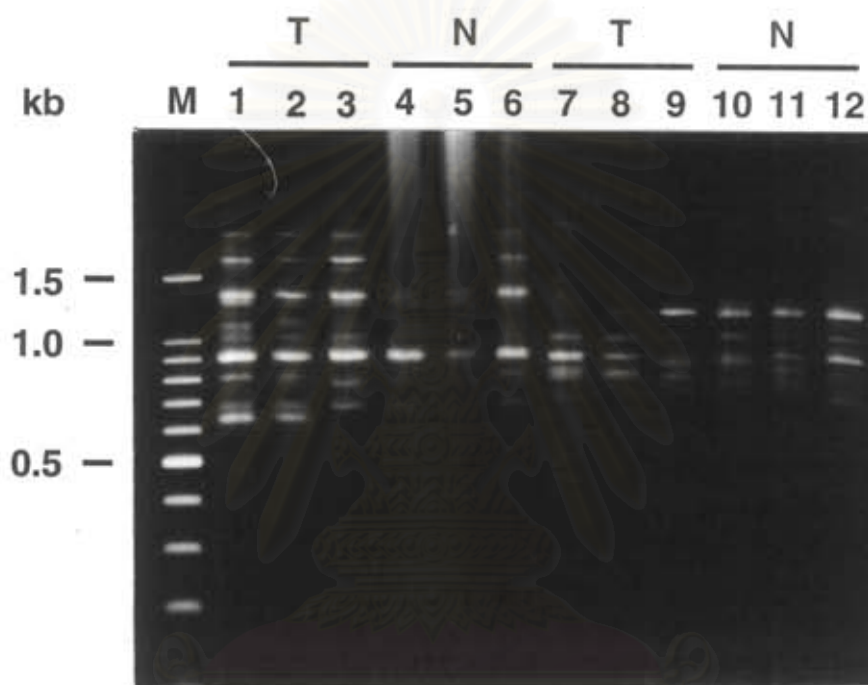
lanes 1-6 : results from the using of primer OPB-04

lanes 7-12 : results from the using of primer OPB-05

T : tolerance *P. monodon*

N : normal *P. monodon*

Appendix 2.9



lane M : a 100 bp DNA ladder

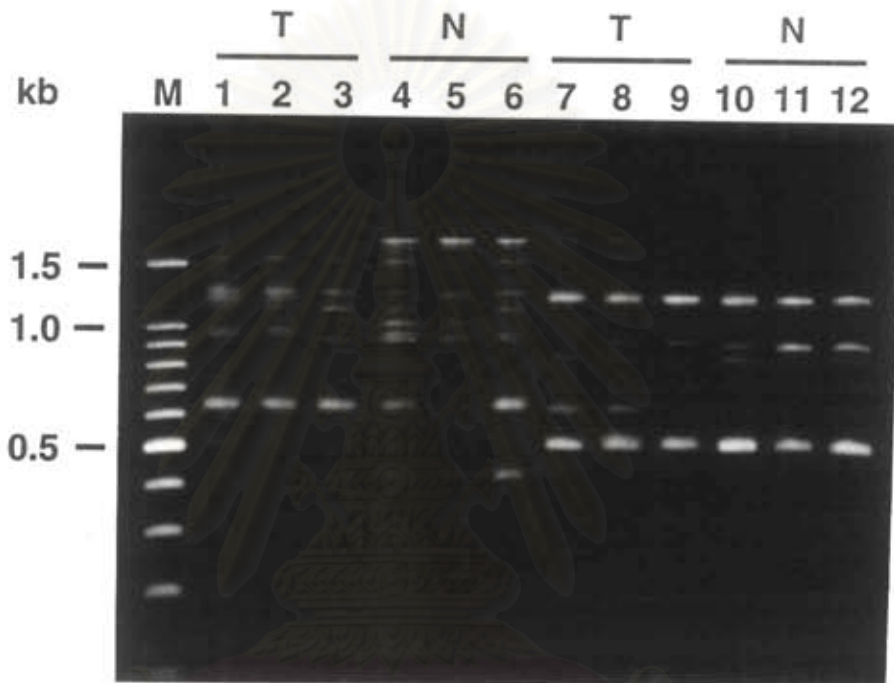
lanes 1-6 : results from the using of primer OPB-07

lanes 7-12 : results from the using of primer OPB-08

T : tolerance *P. monodon*

N : normal *P. monodon*

Appendix 2.10



lane M : a 100 bp DNA ladder

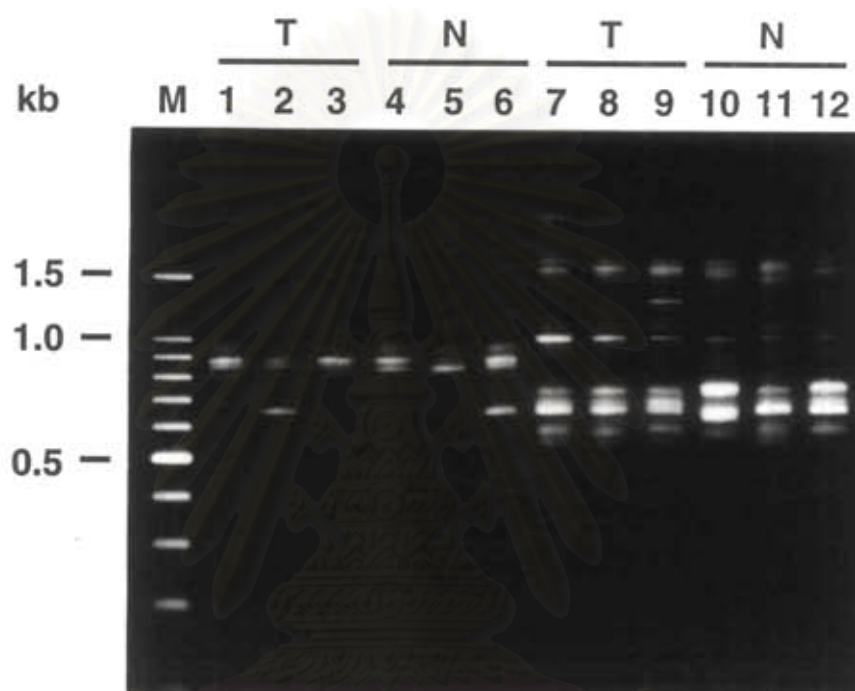
lanes 1-6 : results from the using of primer OPB-06

lanes 7-12 : results from the using of primer OPB-12

T : tolerance *P. monodon*

N : normal *P. monodon*

Appendix 2.11



lane M : a 100 bp DNA ladder

lanes 1-6 : results from the using of primer OPB-14

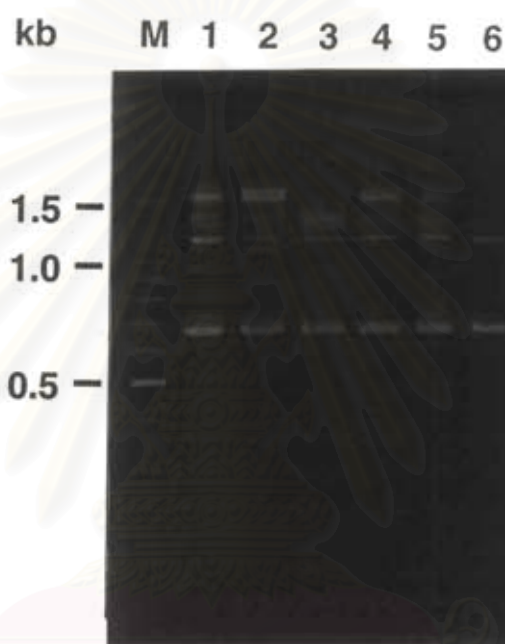
lanes 7-12 : results from the using of primer OPB-15

T : tolerance *P. monodon*

N : normal *P. monodon*

APPENDIX 3

RAPD patterns of viral tolerance shrimps using primer OPA-04



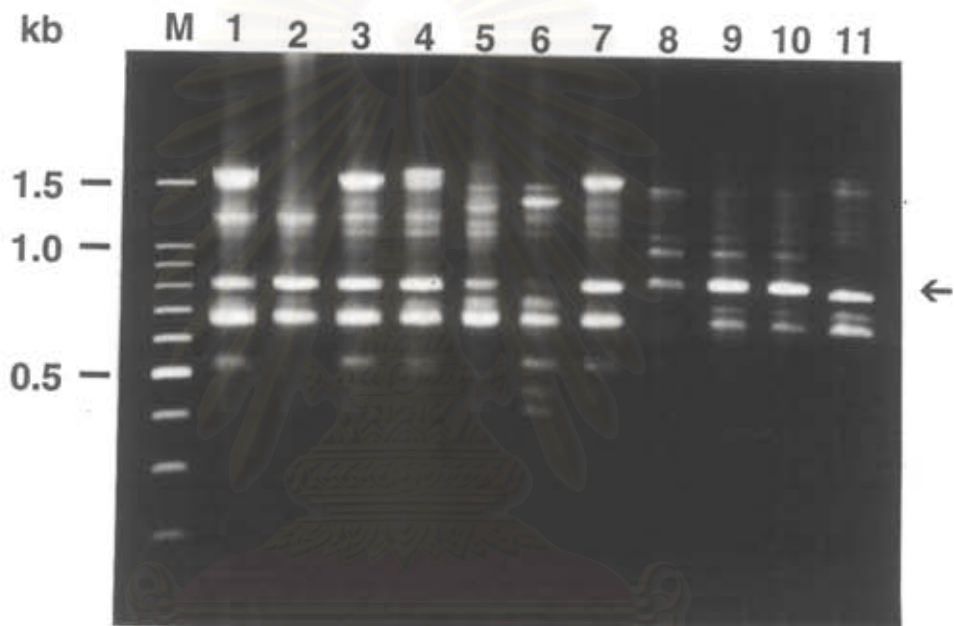
lane M : a 100 bp DNA ladder

lanes 1-6 : Individuals of viral tolerance *P. monodon*

จุฬาลงกรณ์มหาวิทยาลัย

APPENDIX 4

RAPD patterns of normal shrimps using primer OPA-04



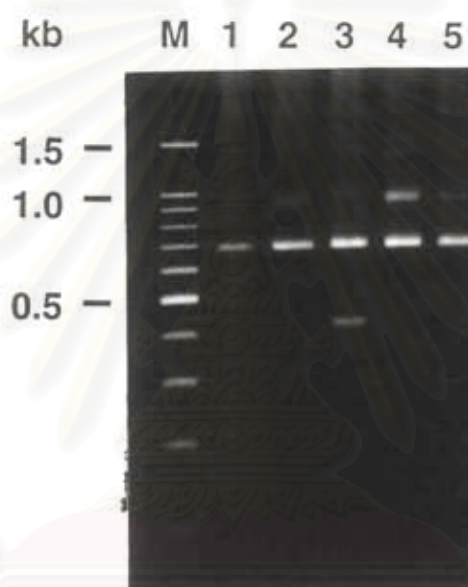
lane M : a 100 bp DNA ladder

lanes 1-11 : Individuals of normal *P. monodon*

← : DNA band with size about 800 bp

APPENDIX 5

RAPD patterns of viral tolerance shrimps using primer OPB-20

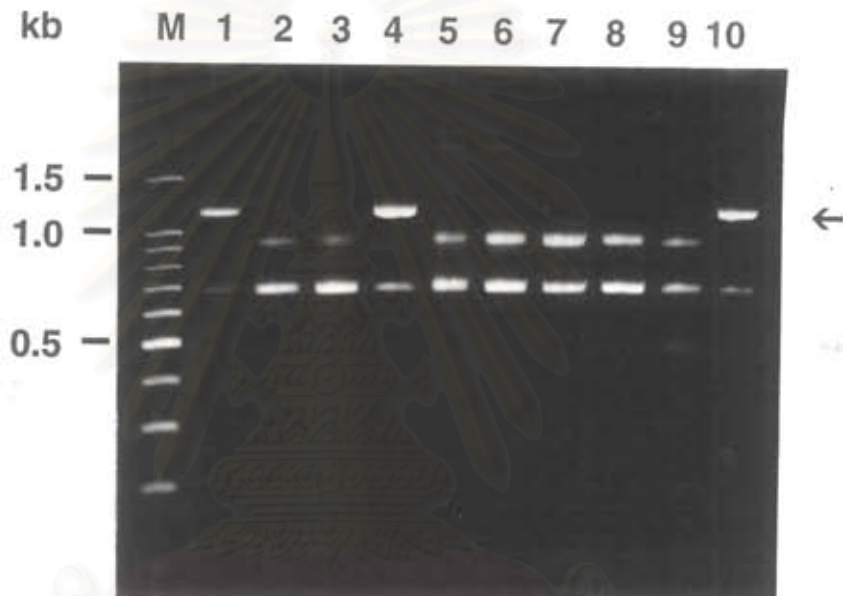


lane M : a 100 bp DNA ladder

lanes 1-5 : Individuals of viral tolerance *P. monodon*

APPENDIX 6

RAPD patterns of normal shrimps using primer OPB-20



lane M : a 100 bp DNA ladder

lane 1-10 : Individuals of normal *P. monodon*

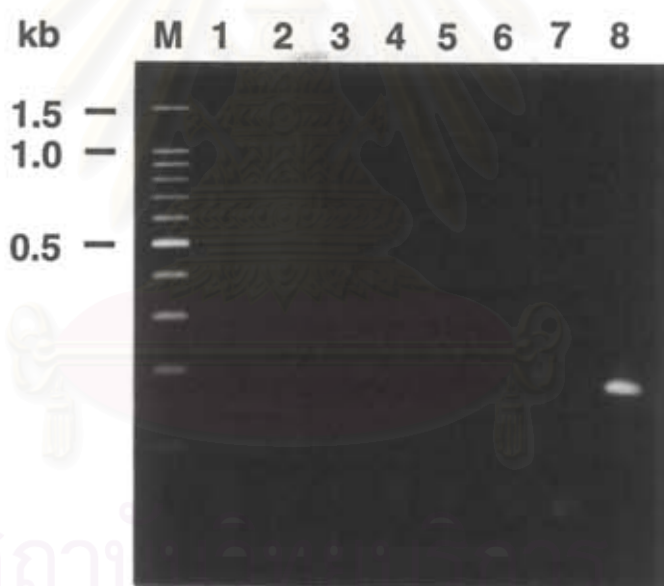
← : DNA band with size about 1,250 bp

APPENDIX 7

Specificity of the 800 bp fragment to normal shrimps

Appendix 7.1

Ethidium bromide stained gel showing the absence of a 173 bp PCR product of *P. monodon* from Trang (collected in 1997)



lane M : a 100 bp DNA ladder

lanes 1-6 individuals collected from Trang

lane 7 : negative control

lane 8 : positive control

Appendix 7.1 (continued)

kb M 1 2 3 4 5 6 7 8 9 10 11 12 13 14 15 16



lane M : a 100 bp DNA ladder

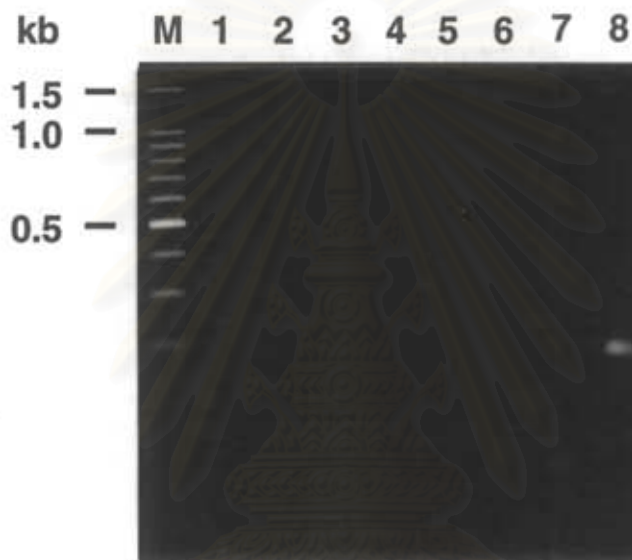
lanes 1-14 : individuals collected from Trang

lane 15 : negative control

lane 16 : positive control

Appendix 7.2

Ethidium bromide stained gel showing the absence of a 173 bp PCR product of *P. monodon* from Trat



lane M : a 100 bp DNA ladder

lanes 1-6 individuals collected from Trat

lane 7 : negative control

lane 8 : positive control

Appendix 7.2 (continued)

lane M : a 100 bp DNA ladder

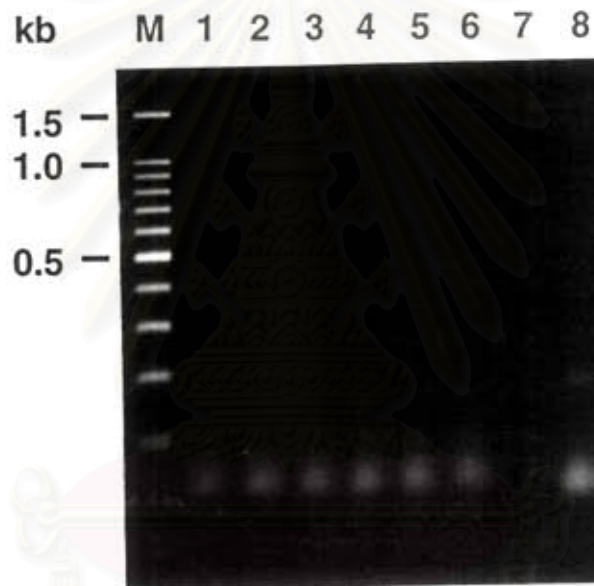
lanes 1-14 : individuals collected from Trat

lane 15 : negative control

lane 16 : positive control

Appendix 7.3

Ethidium bromide stained gel showing the absence of a 173 bp PCR product of *P. monodon* from Chumphon



lane M : a 100 bp DNA ladder

lanes 1-6 individuals collected from Chumphon

lane 7 : negative control

lane 8 : positive control

Appendix 7.3 (continued)

lane M : a 100 bp DNA ladder

lanes 1-14 : individuals collected from Chumphon

lane 15 : negative control

lane 16 : positive control

BIOGRAPHY

Miss Potchanee Hunsonti was born on January 18, 1972. She graduated with the bachelor degree of science from Chulalongkorn University in 1994. She has further studied for the degree of Master of science, department of Biochemistry, Chulalongkorn University in 1995.



สถาบันวิทยบริการ
จุฬาลงกรณ์มหาวิทยาลัย