

REFERENCES

- Abd El Hady, F. K., and Hegazi, A. G. 2002. Egyptian propolis: 2 chemical composition, antiviral and antimicrobial activities of East Nile Delta propolis. Z. Naturforsch. 57c: 386-394.
- Amano, K., Nemato, T., and Heard, T. A. 2000. What are stingless bees and why and how to use them as crop pollinators. J. Api. Res. 34.
- Augsburger, C. K. 1980. Mass flowering of a tropical shrub (*Hybanthus prunifolius*): influence on pollinator attraction and movement. Evolution 34: 475-488.
- Bankova, V. S., De Castro, S. L., and Marcucci, M. C. 2000. Propolis: Recent advances in chemistry and plant origins. Apidologie 31: 3-15.
- Bankova, V., Popova, M., Bogdanov, S., and Sabatini, A. G. 2002. Chemical composition of European propolis: Expected and unexpected results. Z. Naturforsch. C J. Biosci. 57: 530-533.
- Banskota, A. H., Tezuka, Y., and Kadota, S. 2001. Recent progress in pharmacological research of propolis. Phytother. Res. 15(7): 561-571.
- Bhasabutra, T. 1997. The Effects of Some Plant Extracts on Mango Antracnose Fungus (*Colletotrichum gloeosporioides* (Penz.) Sacc.). Master's Thesis. Department of Plant Pathology, Graduate School, Kasetsart University.

- Biesmeijer, J. C., Toth, E., 1998. Individual foraging, activity level and longevity in the stingless bee *Melipona beecheii* in Costa Rica (Hymenoptera Apidae meliponinae). Insectes Soc. 45: 427-443.
- Burdock, G. A. 1998. Review of the biological properties and toxicity of bee propolis (propolis). Food Chem. Toxicol. 36(4): 347-363.
- Camargo, J. M. F., and Roubik, D. W. 1991. Systematics and bionomics of the apoid obligate necrophages: the *Trigona hypogea* group (Hymenoptera: Apidae: Meliponinae). Biol. J. Linn. Soc. 44: 13-40.
- Chan, P. K., and Hayes, W. A. 1989. Principles and methods for acute toxicity and eye irritancy 2nd. Principles and Methods of Toxicology. New York: Raven Press, Ltd.
- Chang, C. C., Yang, M. Y., Wen, H. M., and Chern, J. C. 2002. Estimation of total flavonoid content in propolis by two complementary colorimetric methods. J. Food Drug Anal. 10(3): 178-182.
- Chinh, T. X., Sommeijer, M. J., Boot, W. J., and Michener, C. D. 2004. Nest architecture and colony characteristics of three stingless bees in North Vietnam with the first description of the nest of *Lisotrigona carpenteri* Engel (Hymenoptera: Apidae, Meliponini). In Reproduction in Eusocial Bees, pp. 26-39. Hanoi: Central Reproduction FSB, Utrecht University.

- Crane, E. 1999. The World History of Beekeeping and Honey Hunting. Great Britain: Redwood Books.
- Cuesta-Rubio, O., Frontana-Uribe, B. A., Ramirez-Apan, T., and Cardenas, J. 2002. Polyisoprenylated benzophenones in Cuban propolis; biological activity of nemorosone. Z. Naturforsch. C J. Biosci. 57: 372-378.
- Davis, C., and Ward, W. 2003. Control of Chalkbrood Disease with Natural Products. Australia: Printed on environmentally friendly paper by Canprint.
- Eltz, T., Brühl, C. A., Imiyabir, Z., and Linsenmair, K. E. 2003. Nesting and nest trees of stingless bees (Apidae: Meliponini) in lowland dipterocarp forests in Sabah, Malaysia, with implications for forest management. Forest Ecol. Manage. 172: 301-313.
- Gabrys, J., Konecki, J., Krol, W., Scheller, S., and Shani, J. 1986. Free amino acids in bee hive product (propolis) as identified and quantified by gas-liquid-chromatography. Pharmacol. Res. Commun. 18(6): 513-518.
- Garedew, A., Schmolz, E., and Lamprecht, I. 2003. Microcalorimetric and respirometric investigation of the effect of temperature on the antivarroa action of the natural bee product-propolis. Thermochimica Acta 399: 171-180.

- Garrigues, C. J., De Fontenay, C. G., Linas, D. M., Lagente, M., and Seguela, P. J. 1994. New Invitro assay based on glucose consumption for determining Itraconazole and Amphotericin B activities against *Aspergillus fumigatus*. J. Antimicrob. Chemother. 38(12): 2857-2862.
- Ghisalberti E. L. 1979. Propolis-review. Bee World 60: 59-84.
- Jeng, S. N., Shih, M. K., Kao, C. M., Liu, T. Z., and Chen, S. C. 2000. Antimutagenicity of ethanol extracts of bee glue against environmental mutagens. Food Chem. Toxicol. 38(10): 893-897.
- Kartal, M., Kaya, S., and Kurucu, S. 2002. GC-MS analysis of propolis samples from two different regions of Turkey. Z. Naturforsch. 57c: 905-909.
- Kerr, W. E., and Costa, C. C. 1961. Funções diferentes tomadas pela glândula mandibular na evolução das abelhas em geral e em "*Trigona (Oxytrigona) tataira*" em espacial. Rev. Brasileira Biol. 21: 1-16.
- Kim B. S., Moon, S. S., and Hwang, B. K. 2000. Structure elucidation and antifungal activity of an anthracycline antibiotic, daunomycin, isolated from *Actinomadura roseola*. J. Agric. Food Chem. 48(5): 1875-1881.
- Kujumgiev, A., Tsvetkova, I., Serkedjieva, Y., Bankova, V., Christov, R., and Popov, S. 1999. Antibacterial, antifungal and antiviral activity of propolis of different geographic origin. J. Ethnopharmacol. 64: 235-240.

- Maciejewicz, W., Daniewski, M., Bal, K., and Markowski, W. 2001. GC-MS identification of the flavonoid aglycones isolated from propolis. Chromatographia 53: 343-346.
- Marcucci, M. C. 1995. Propolis-chemical-composition, biological properties and therapeutic activity. Apidologie 26: 83-99.
- Marcucci, M. C., deCamargo, F. A., and Lopes, C. M. A. 1996. Identification of amino acids in Brazilian propolis. Z. Naturforsch. C J. Biosci. 51: 11-14.
- Matsuno, T. 1997. O efeito terapêutico da propolis. New York: Columbia University, Institute of Cancer Research, (in Portuguese).
- Michener, C. D. 1974. The Social Behavior of the Bees. A comparative study. Cambridge, Mass, Harvard Univ. Press, 404.
- Michener, C. D. 1990. Classification of the Apidae (Hymenoptera), Univ. Kansas Sci. Bull. 54: 75-164.
- Michener, C. D. 2000. The Bees of the World, Johns Hopkins Univ. press, Baltimore.
- Park, Y. K., Alencar, S. M., and Aguiar, C. L. 2002. Botanical origin and chemical composition of Brazilian propolis. J. Agric. Food Chem. 50: 2502-2506.

- Nogueira-Neto, P. 1970. A Criação de Abelhas indígenas sem Ferrão (Meliponinae). Chácaras e Quintos, São Paulo.
- Orawan Phuphisut. 2004. Genetic diversity of stingless bees (Apidae: Meliponinae) in Thailand detected by PCR-RFLP of mitochondrial DNA. Master's Thesis, Department of Biology, Faculty of Science, Chulalongkorn University.
- Patricio, E. F. L. R. A., Cruz-Lo'pez, L., Maile, R., Tentschert, J., Jones, G. R., Morgan, E. D. 2002. The propolis of stingless bees: terpenes from the tibia of three *Frieseomelitta* species. J. Insect Physiol. 48: 249-254.
- Peng, G., Li, Q., and Virgona, N. 2002. Novel method of Fingerprinting Bioactive constituents in propolis for quantity assurance. In The Complementary Medicine Research Symposium. Australia : Brisbane.
- Radovic, I. T. 1981. Anatomy and function of the sting apparatus of stingless bees (Hymenoptera, Apinae, Meliponini). Proc. Entomol. Soc Wash. 83: 269-273.
- Rinderer, T. E. 1986. Bee Genetics and Breeding, pp. 125-133. Baton Rouge, Louisiana: Academic Press.
- Roubik, D. W. 1982. Obligate necrophagy in a social bee. Science 217: 1059-1060.

- Roubik, D. W. 1989. Ecology and Natural History of Tropical Bees. Cambridge Univ. Press.
- Roubik, D. W. 1990. Biogeographical ecology of *Melipona* (Apidae: Meliponinae). In Proc. 11th Int. Congr. IUSI, 379-380.
- Ruttner, F. 1988. Biogeography and Taxonomy of Honey Bee. Berlin: Springer-Verlag.
- Sakagami, Sh. F., Inoue, T., and Salmah, S. 1985. Evolutionary Ecology of Insects in Humid Tropics Especially in Central Sumatra. Sumatra nature study (entomology) Kanazawa University.
- Sakagami, Sh. F., Yamane S., and Hambali, G. G. 1983. Nests of some Southeast Asian stingless bees. Bull. Fac. Educ. 32: 1-21.
- Salatino, A., Teixeira, É. W., Negri, G., Negri, G., and Message D. 2005. Origin and chemical variation of Brazilian propolis. eCAM 2(1):33-38.
- Schwarz, H. F. 1939. The Indo-Malayan species of *Trigona*. Ibid. 76: 83-141.
- Trusheva, B., Popova, M., Bankova, V., Tsvetkova, I., Naydensky, C., and Sabatini, A.G. 2003. A new type of European propolis, containing bioactive labdabes. Rivista Italiana E.P.P.O.S. 36: 3-7.

- Valcic, S., Montenegro, G., Mujica, M. A., Avila, G., Franzblau, S., Singh, P. M., Maise, M. W., and Timmermann, N. B. 1999. Phytochemical, morphological, and biological investigations of propolis from Central Chile. Z. Naturforsch. 54c: 406-416.
- Wang, J. B., Lien, H.Y., and Yu, R. Z. 2004. Supercritical fluid extractive fractionation-study of the antioxidant activities of propolis. Food Chemistry. 86: 237-243.
- Wedge, D.E., Galindo, J.C.G., and Macias, F.A. 2000. Fungicidal activity of natural and synthetic Sesquiterpene Lactone analogs. Phytochemistry. 53: 747-757.
- Wille, A. 1979. Phylogeny and relationships among the genera and subgenera of the stingless bees (Meliponinae) of the world. Rev. Biol.Trop. 27: 241-277.
- Wille, A. 1983. Biology of the stingless bees. Ann. Rev. Entomol. 28: 41-64.
- Wongsiri, S. 1989. Biology of Honeybee. Ton-or Press. Bangkok. (In Thai)
- Yildirim, Z., Hacievliyagil, S., Kutlu, O. N., Aydin, E. N., Kurkcuoglu, M., Iraz, M., and Durmaz, R. 2004. Effect of water extract of Turkish propolis on tuberculosis infection in guinea-pigs. Pharmacological Research. 49: 287-292.

APPENDICES

APPENDIX A**Fungal Culture Media**

Potato Dextrose Agar

Potato 200 g

Dextrose 20 g

Agar 20 g

Distilled water add to 1000 ml

Stained Solution

Acetic acid 5%

Lactophenol 1%

Destained solution

Acetic acid 5%

APPENDIX B

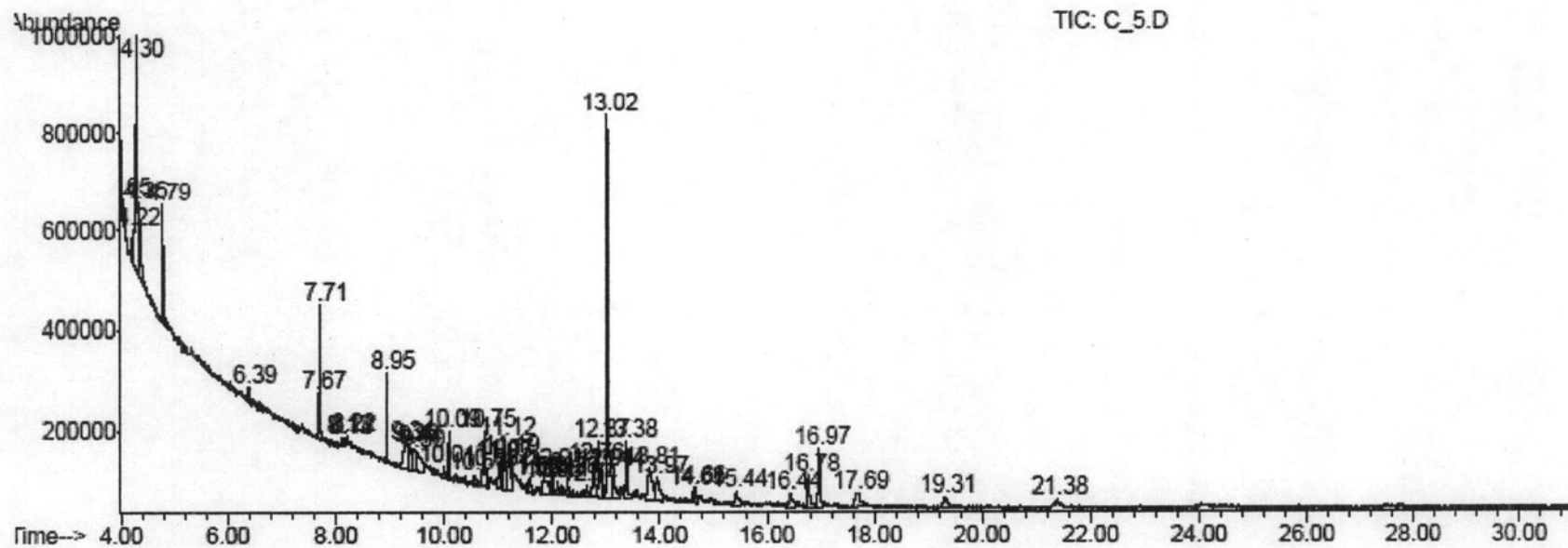


Fig. 1B Chromatogram of Fraction 3

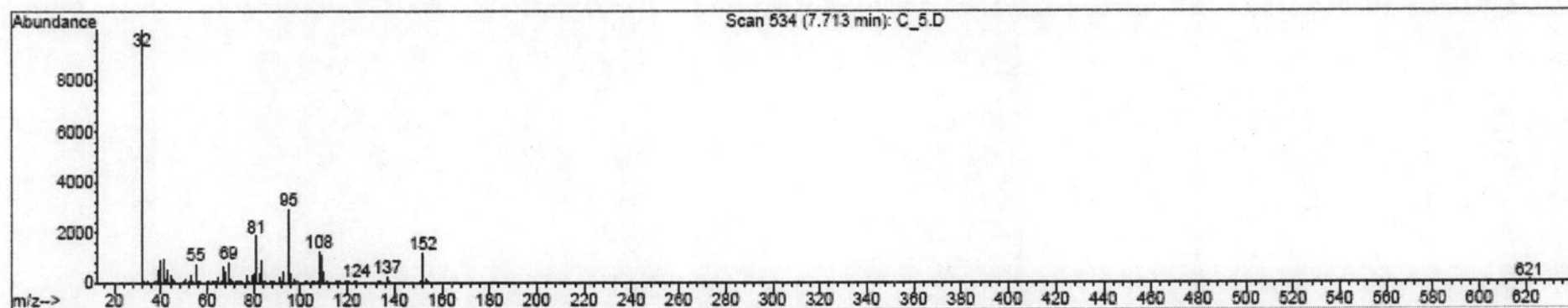


Fig. 2B Chromatogram of camphor

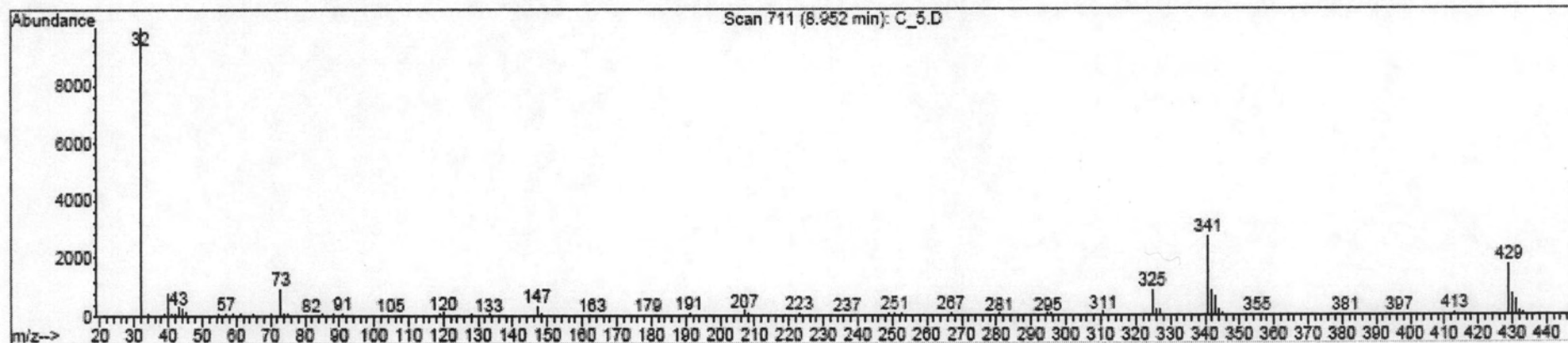


Fig. 3B Chromatogram of 2, 4 – Bis (dimethylbenzyl) - 6 - *t*- butylphenol

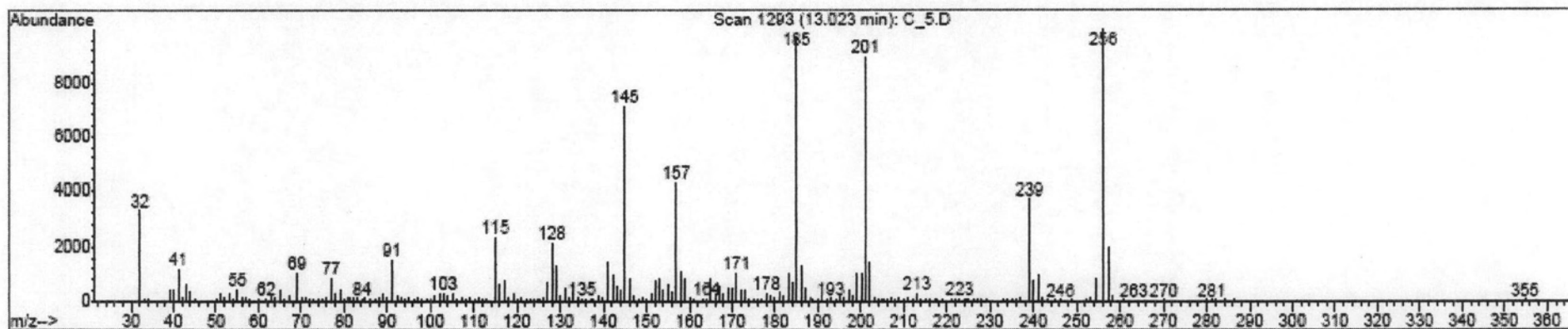


Fig. 4B Chromatogram of 6-oxohuperzine A

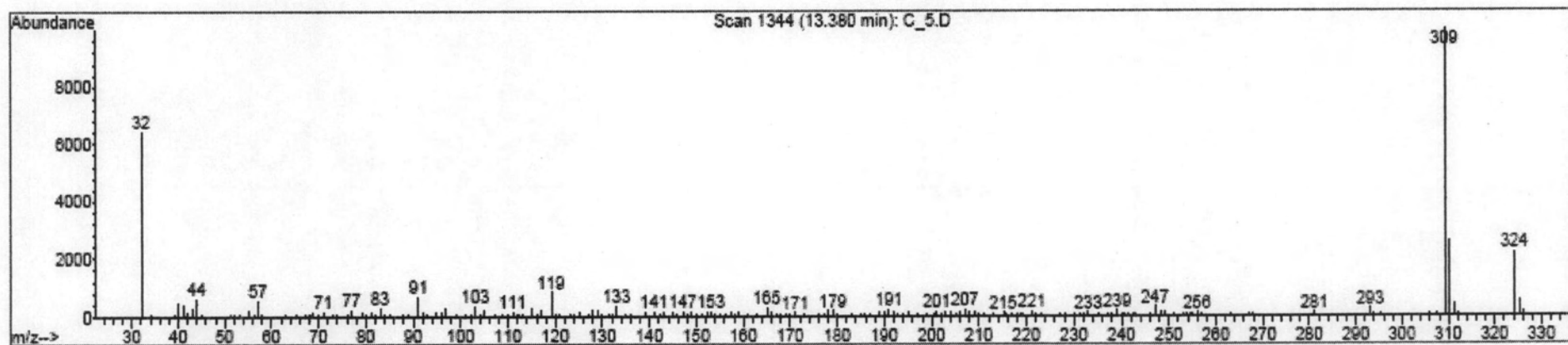


Fig. 5B Chromatogram of 2,6-Diphenyl-1,7-dihydrodipyrrolo [2,3-b:3',2'-E] pyridine

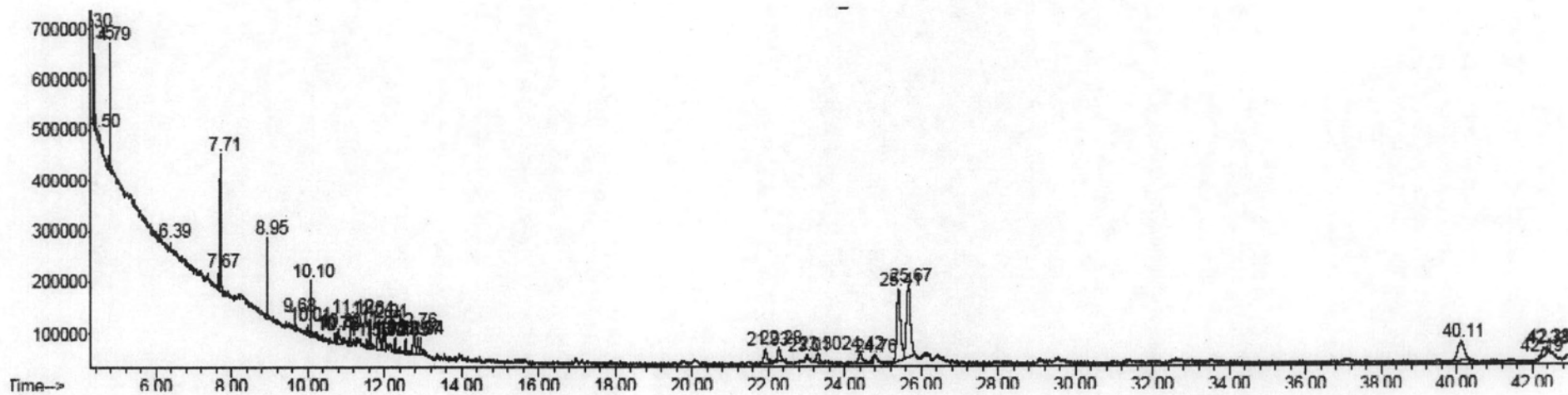


Fig. 6B Chromatogram of Fraction 4

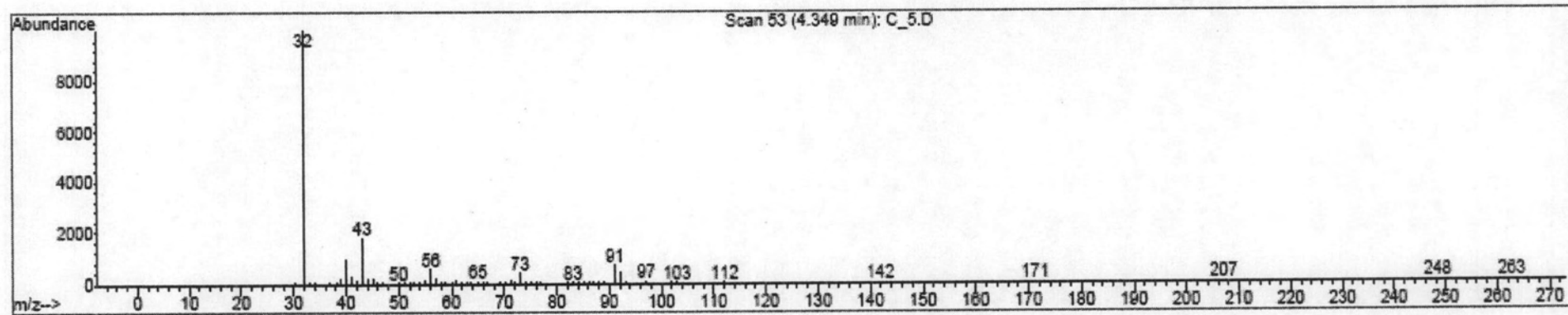


Fig. 7B Chromatogram of 2-methylpropyl ester

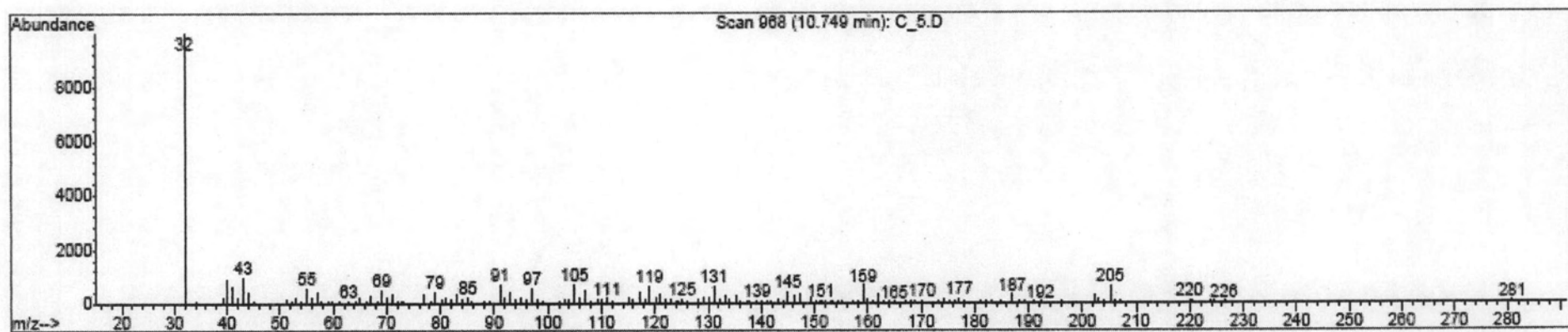


Fig. 8B Chromatogram of 1H-Cycloprop[e]azulen-7-ol

APPENDIX C

APPENDIX C

***** PROBIT ANALYSIS *****

Fraction1

DATA Information

5 unweighted cases accepted.
 0 cases rejected because of missing data.
 0 cases are in the control group.
 0 cases rejected because LOG-transform can't be done.

MODEL Information

ONLY Normal Sigmoid is requested.

Parameter estimates converged after 14 iterations.
 Optimal solution found.

Parameter Estimates (PROBIT model: $(\text{PROBIT}(p)) = \text{Intercept} + \text{BX}$):

	Regression Coeff.	Standard Error	Coeff./S.E.
CONC	-.00036	.06927	-.00526

	Intercept	Standard Error	Intercept/S.E.
	-1.28092	.14269	-8.97696

Pearson Goodness-of-Fit Chi Square = 1.578 DF = 3 P = .664

Since Goodness-of-Fit Chi square is NOT significant, no heterogeneity factor is used in the calculation of confidence limits.

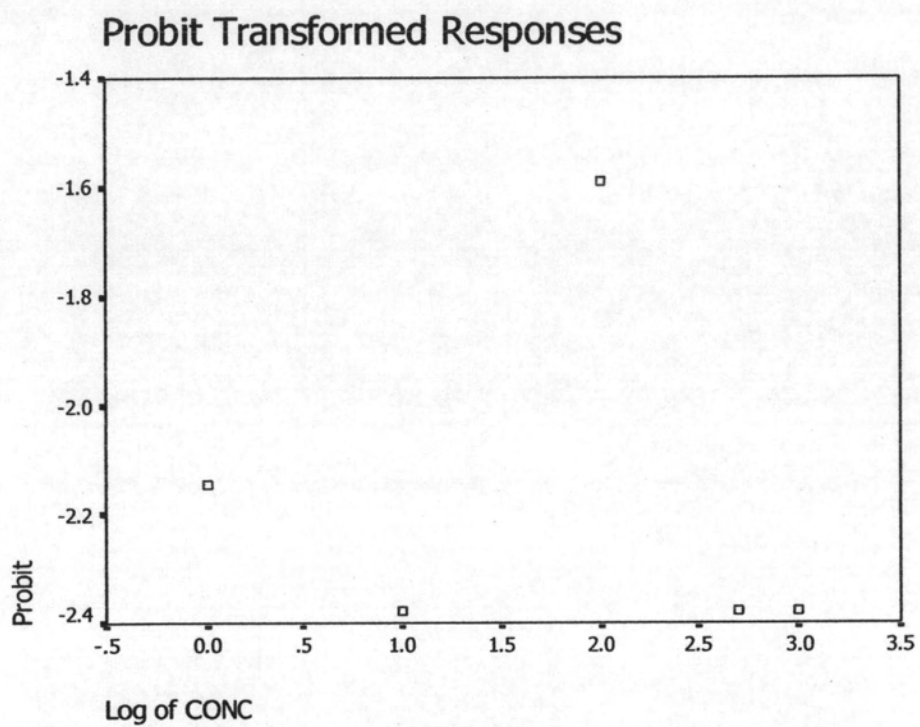
Observed and Expected Frequencies

CONC	Number of Subjects	Observed Responses	Expected Responses	Residual	Prob
.00	100.0	9.7	10.011	-.341	.10011
1.00	100.0	9.0	10.005	-1.005	.10005
2.00	100.0	13.3	9.998	3.332	.09998
2.70	100.0	9.0	9.994	-.994	.09994
3.00	100.0	9.0	9.992	-.992	.09992

Confidence Limits for Effective CONC

Prob	CONC	95% Confidence Limits	
		Lower	Upper
.01	.	.	.
.02	.	.	.
.03	.	.	.
.04	.	.	.
.05	.	.	.
.06	.	.	.
.07	.	.	.
.08	.	.	.
.09	1.324947+164	.	.
.10	54.80640	.	.
.15	.00000	.	.
.20	.00000	.	.
.25	.00000	.	.
.30	.00000	.	.
.35	.00000	.	.
.40	.00000	.	.
.45	.00000	.	.
.50	.00000	.	.
.55	.00000	.	.
.60	.00000	.	.
.65	.00000	.	.
.70	.00000	.	.
.75	.00000	.	.
.80	.00000	.	.
.85	.00000	.	.
.90	.00000	.	.

.91	.00000	.	.
.92	.00000	.	.
.93	.00000	.	.
.94	.00000	.	.
.95	.00000	.	.
.96	.00000	.	.
.97	.00000	.	.
.98	.00000	.	.
.99	.00000	.	.



Fraction 2

DATA Information

5 unweighted cases accepted.

1 cases rejected because of missing data.

0 cases are in the control group.

0 cases rejected because LOG-transform can't be done.

MODEL Information

ONLY Normal Sigmoid is requested.

*

Parameter estimates converged after 14 iterations.

Optimal solution found.

Parameter Estimates (PROBIT model: $(\text{PROBIT}(p)) = \text{Intercept} + \text{BX}$):

	Regression Coeff.	Standard Error	Coeff./S.E.
CONC	.00340	.06837	.04977

Intercept	Standard Error	Intercept/S.E.
-1.27247	.14133	-9.00349

Pearson Goodness-of-Fit Chi Square = .177 DF = 3 P = .981

Since Goodness-of-Fit Chi square is NOT significant, no heterogeneity factor is used in the calculation of confidence limits.

Observed and Expected Frequencies

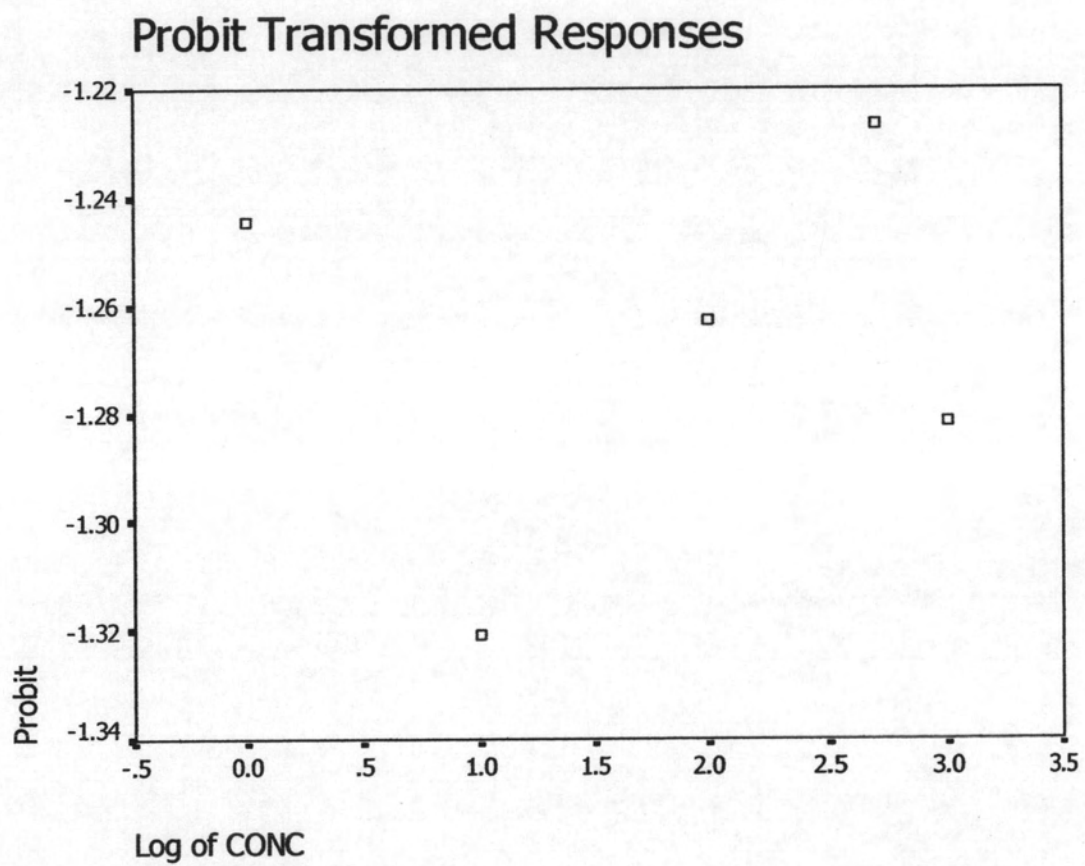
CONC	Number of Subjects	Observed Responses	Expected Responses	Residual	Prob
.00	100.0	10.7	10.160	.510	.10160
1.00	100.0	9.3	10.221	-.891	.10221
2.00	100.0	10.3	10.282	.048	.10282
2.70	100.0	11.0	10.324	.676	.10324
3.00	100.0	10.0	10.343	-.343	.10343

*

Confidence Limits for Effective CONC

Prob	CONC	95% Confidence Limits	
		Lower	Upper
.01	.00000	.	.
.02	2.464702-230	.	.
.03	1.663839-179	.	.
.04	2.871104-141	.	.
.05	3.637877-110	.	.
.06	1.081970E-83	.	.
.07	1.762703E-60	.	.
.08	1.070839E-39	.	.
.09	8.541365E-21	.	.
.10	.00214	.	.
.15	2.332160E+69	.	.
.20	4.174019+126	.	.
.25	5.474638+175	.	.
.30	7.041397+219	.	.
.35	5.266257+260	.	.
.40	3.212049+299	.	.
.45	.	.	.
.50	.	.	.
.55	.	.	.
.60	.	.	.
.65	.	.	.
.70	.	.	.
.75	.	.	.
.80	.	.	.

.85	.	.	.
.90	.	.	.
.91	.	.	.
.92	.	.	.
.93	.	.	.
.94	.	.	.
.95	.	.	.
.96	.	.	.
.97	.	.	.
.98	.	.	.
.99	.	.	.



Fraction 3

***** PROBIT ANALYSIS *****
*

DATA Information

5 unweighted cases accepted.
1 cases rejected because of missing data.
0 cases are in the control group.
0 cases rejected because LOG-transform can't be done.

MODEL Information

ONLY Normal Sigmoid is requested.

Parameter estimates converged after 12 iterations.
Optimal solution found.

Parameter Estimates (PROBIT model: $(\text{PROBIT}(p)) = \text{Intercept} + \text{BX}$):

	Regression Coeff.	Standard Error	Coeff./S.E.
CONC	.93428	.07218	12.94291

	Intercept	Standard Error	Intercept/S.E.
	-1.90887	.15898	-12.00674

Pearson Goodness-of-Fit Chi Square = 33.758 DF = 3 P = .000

Since Goodness-of-Fit Chi square is significant, a heterogeneity factor is used in the calculation of confidence limits.

Observed and Expected Frequencies

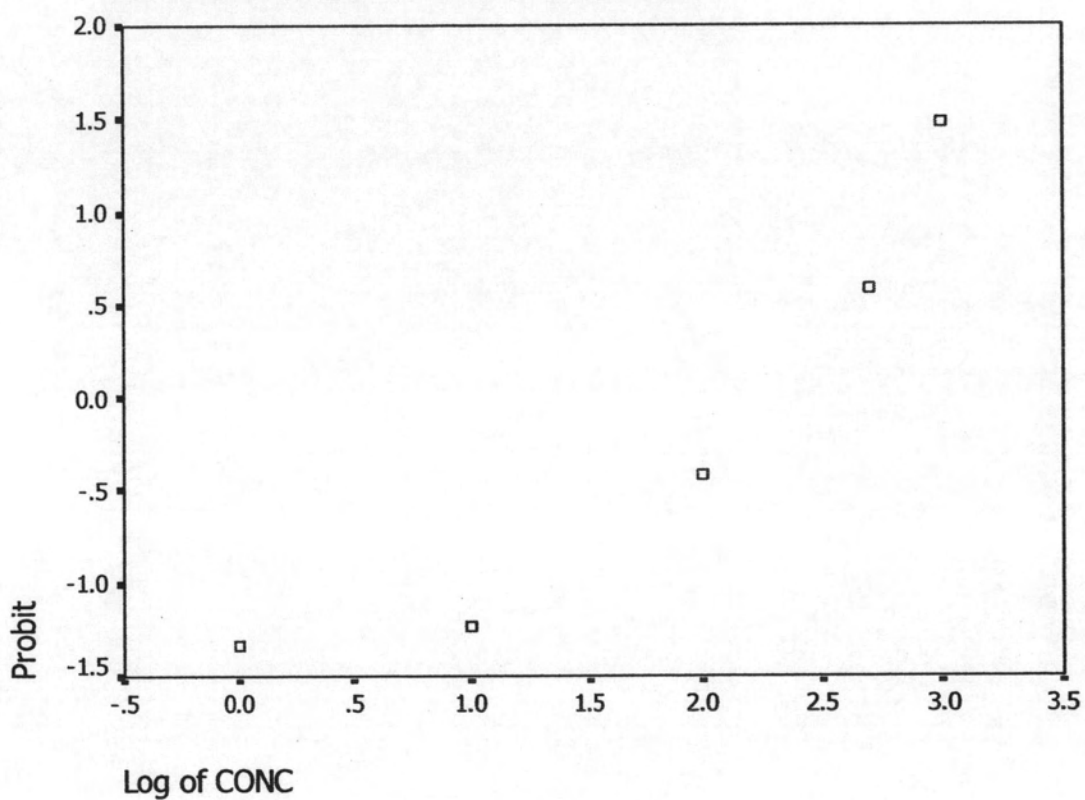
CONC	Number of Subjects	Observed Responses	Expected Responses	Residual	Prob
.00	100.0	9.0	2.814	6.186	.02814
1.00	100.0	11.0	16.488	-5.488	.16488
2.00	100.0	33.7	48.392	-14.722	.48392
2.70	100.0	72.0	72.997	-.997	.72997
3.00	100.0	93.0	81.433	11.567	.81433

Confidence Limits for Effective CONC

Prob	CONC	95% Confidence Limits	
		Lower	Upper
.01	.35740	7.862140E-13	6.32811
.02	.69972	3.485857E-11	9.54961
.03	1.07164	3.840346E-10	12.47768
.04	1.47675	2.324959E-09	15.32372
.05	1.91684	.00000	18.17184
.06	2.39333	.00000	21.06894
.07	2.90764	.00000	24.04708
.08	3.46126	.00000	27.13159
.09	4.05579	.00000	30.34471
.10	4.69293	.00000	33.70750
.15	8.58627	.00004	53.54544
.20	13.87781	.00054	81.09369
.25	20.95122	.00469	122.41244
.30	30.32890	.03051	190.21816
.35	42.72876	.15752	314.58078
.40	59.15307	.65828	575.99409
.45	81.02986	2.22548	1220.28961
.50	110.44502	6.06989	3106.04110
.55	150.53834	13.55228	9657.75941
.60	206.21248	25.68572	36496.80183
.65	285.47757	43.24189	165886.87519
.70	402.19404	67.38279	908925.56035
.75	582.21436	100.45998	6168345.44657
.80	878.96438	147.29544	55358163.7265
.85	1420.65135	218.43841	752691506.481

.90	2599.25293	341.55732	21083160515.0
.91	3007.57651	378.37405	47417504933.8
.92	3524.17578	422.07412	114596679871
.93	4195.19157	475.00585	302998386191
.94	5096.71559	540.80993	899513390484
.95	6363.66222	625.50692	3119236111027
.96	8260.08196	739.96844	1.348288E+13
.97	11382.67457	906.50228	8.182806E+13
.98	17432.76107	1181.34124	9.038673E+14
.99	34130.38122	1777.28069	4.019801E+16

Probit Transformed Responses



Fraction 4

DATA Information

5 unweighted cases accepted.

1 cases rejected because of missing data.

0 cases are in the control group.

0 cases rejected because LOG-transform can't be done.

MODEL Information

ONLY Normal Sigmoid is requested.

Parameter estimates converged after 11 iterations.

Optimal solution found.

Parameter Estimates (PROBIT model: $(\text{PROBIT}(p)) = \text{Intercept} + \text{BX}$):

	Regression Coeff.	Standard Error	Coeff./S.E.
CONC	.66117	.06947	9.51690

	Intercept	Standard Error	Intercept/S.E.
	-1.87068	.16155	-11.57966

Pearson Goodness-of-Fit Chi Square = 46.145 DF = 3 P = .000

Since Goodness-of-Fit Chi square is significant, a heterogeneity factor is used in the calculation of confidence limits.

Observed and Expected Frequencies

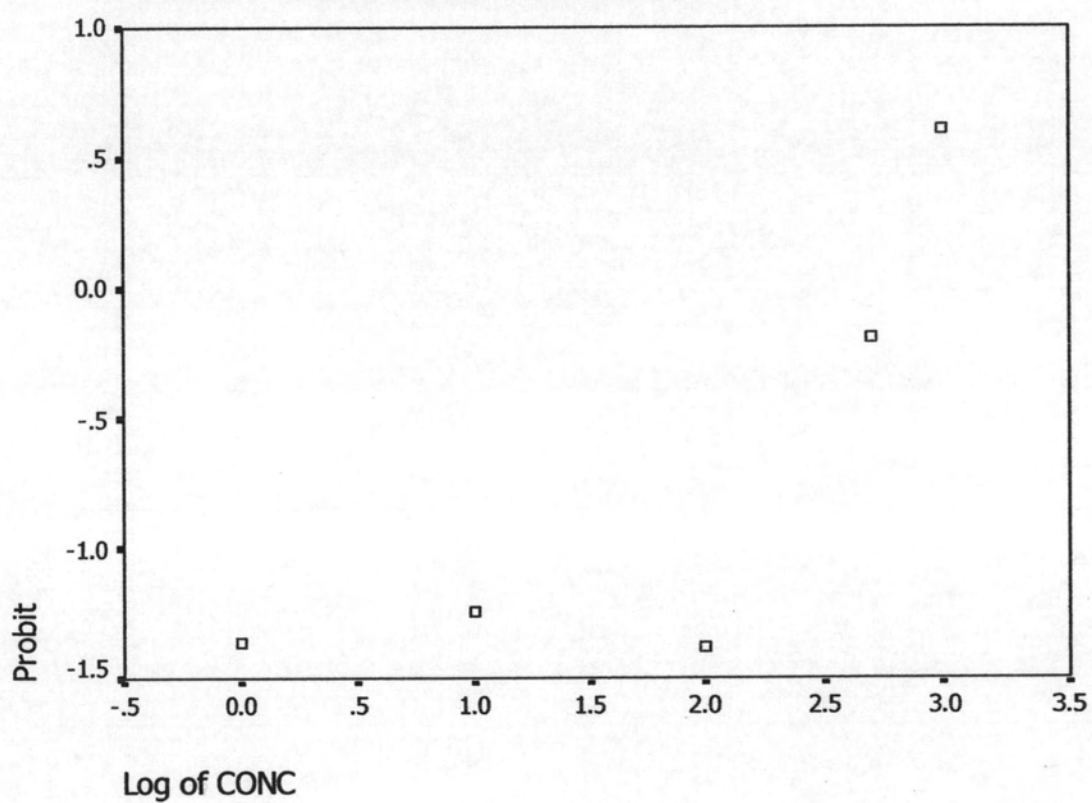
CONC	Number of Subjects	Observed Responses	Expected Responses	Residual	Prob
.00	100.0	8.7	3.069	5.601	.03069
1.00	100.0	10.7	11.323	-.653	.11323
2.00	100.0	8.3	29.173	-20.843	.29173
2.70	100.0	42.3	46.565	-4.235	.46565
3.00	100.0	73.0	54.492	18.508	.54492

Confidence Limits for Effective CONC

Prob	CONC	95% Confidence Limits	
		Lower	Upper
.01	.20456	.	.
.02	.52859	.	.
.03	.96540	.	.
.04	1.51877	.	.
.05	2.19564	.	.
.06	3.00472	.	.
.07	3.95606	.	.
.08	5.06085	.	.
.09	6.33141	.	.
.10	7.78115	.	.
.15	18.27165	.	.
.20	36.01018	.	.
.25	64.44757	.	.
.30	108.69559	.	.
.35	176.42750	.	.
.40	279.36499	.	.
.45	435.80559	.	.
.50	675.07459	.	.
.55	1045.70871	.	.
.60	1631.29141	.	.
.65	2583.07637	.	.
.70	4192.67875	.	.
.75	7071.26307	.	.
.80	12655.47003	.	.
.85	24941.68217	.	.

.90	58567.88310	.	.
.91	71978.52984	.	.
.92	90049.17999	.	.
.93	115196.90385	.	.
.94	151669.94743	.	.
.95	207559.60977	.	.
.96	300062.13757	.	.
.97	472057.48827	.	.
.98	862153.36192	.	.
.99	2227830.61346	.	.

Probit Transformed Responses



Fraction 5

DATA Information

5 unweighted cases accepted.

1 cases rejected because of missing data.

0 cases are in the control group.

0 cases rejected because LOG-transform can't be done.

MODEL Information

ONLY Normal Sigmoid is requested.

Parameter estimates converged after 11 iterations.

Optimal solution found.

Parameter Estimates (PROBIT model: $(\text{PROBIT}(p)) = \text{Intercept} + \text{BX}$):

	Regression Coeff.	Standard Error	Coeff./S.E.
CONC	.30935	.06729	4.59713

Intercept	Standard Error	Intercept/S.E.
-1.58992	.15306	-10.38772

Pearson Goodness-of-Fit Chi Square = 18.878 DF = 3 P = .000

Since Goodness-of-Fit Chi square is significant, a heterogeneity factor is used in the calculation of confidence limits.

Observed and Expected Frequencies

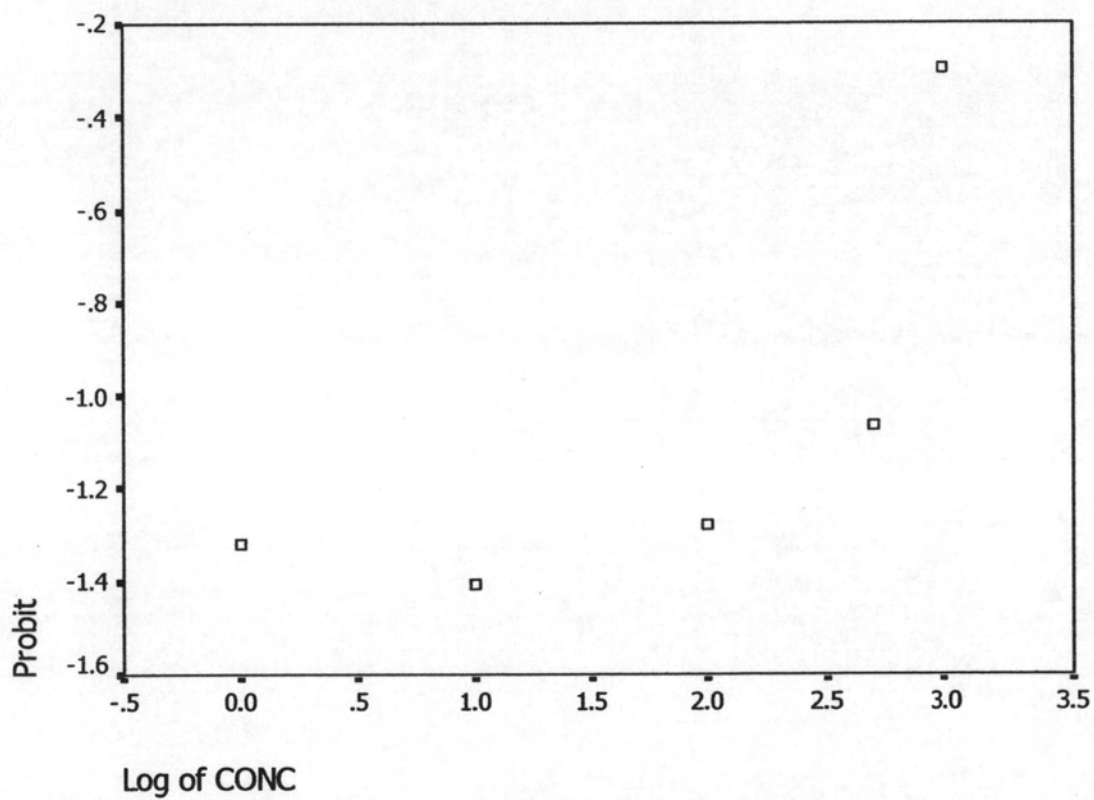
CONC	Number of Subjects	Observed Responses	Expected Responses	Residual	Prob
.00	100.0	9.3	5.593	3.737	.05593
1.00	100.0	8.0	10.017	-2.017	.10017
2.00	100.0	10.0	16.572	-6.572	.16572
2.70	100.0	14.3	22.513	-8.183	.22513
3.00	100.0	38.3	25.403	12.927	.25403

Confidence Limits for Effective CONC

Prob	CONC	95% Confidence Limits	
		Lower	Upper
.01	.00416	.	.
.02	.03167	.	.
.03	.11474	.	.
.04	.30221	.	.
.05	.66437	.	.
.06	1.29897	.	.
.07	2.33837	.	.
.08	3.95837	.	.
.09	6.38885	.	.
.10	9.92659	.	.
.15	61.53970	.	.
.20	262.35791	.	.
.25	910.23589	.	.
.30	2781.78751	.	.
.35	7832.60563	.	.
.40	20917.79511	.	.
.45	54108.52225	.	.
.50	137870.53148	.	.
.55	351299.25309	.	.
.60	908713.53069	.	.
.65	2426814.82521	.	.
.70	6833118.40658	.	.
.75	20882810.3034	.	.
.80	72451727.0879	.	.

.85	308878387.396	.	.
.90	1914885016.83	.	.
.91	2975229628.66	.	.
.92	4802047634.22	.	.
.93	8128870851.50	.	.
.94	14633385359.7	.	.
.95	28610960477.9	.	.
.96	62898519470.3	.	.
.97	165660398829	.	.
.98	600211414860	.	.
.99	4565541264221	.	.

Probit Transformed Responses



Fraction 6

DATA Information

5 unweighted cases accepted.

1 cases rejected because of missing data.

0 cases are in the control group.

0 cases rejected because LOG-transform can't be done.

MODEL Information

ONLY Normal Sigmoid is requested.

Parameter estimates converged after 11 iterations.

Optimal solution found.

Parameter Estimates (PROBIT model: (PROBIT(p)) = Intercept + BX):

	Regression Coeff.	Standard Error	Coeff./S.E.
CONC	.41444	.06868	6.03462

Intercept	Standard Error	Intercept/S.E.
-1.69572	.15881	-10.67736

Pearson Goodness-of-Fit Chi Square = 11.303 DF = 3 P = .010

Since Goodness-of-Fit Chi square is significant, a heterogeneity factor is used in the calculation of confidence limits.

Observed and Expected Frequencies

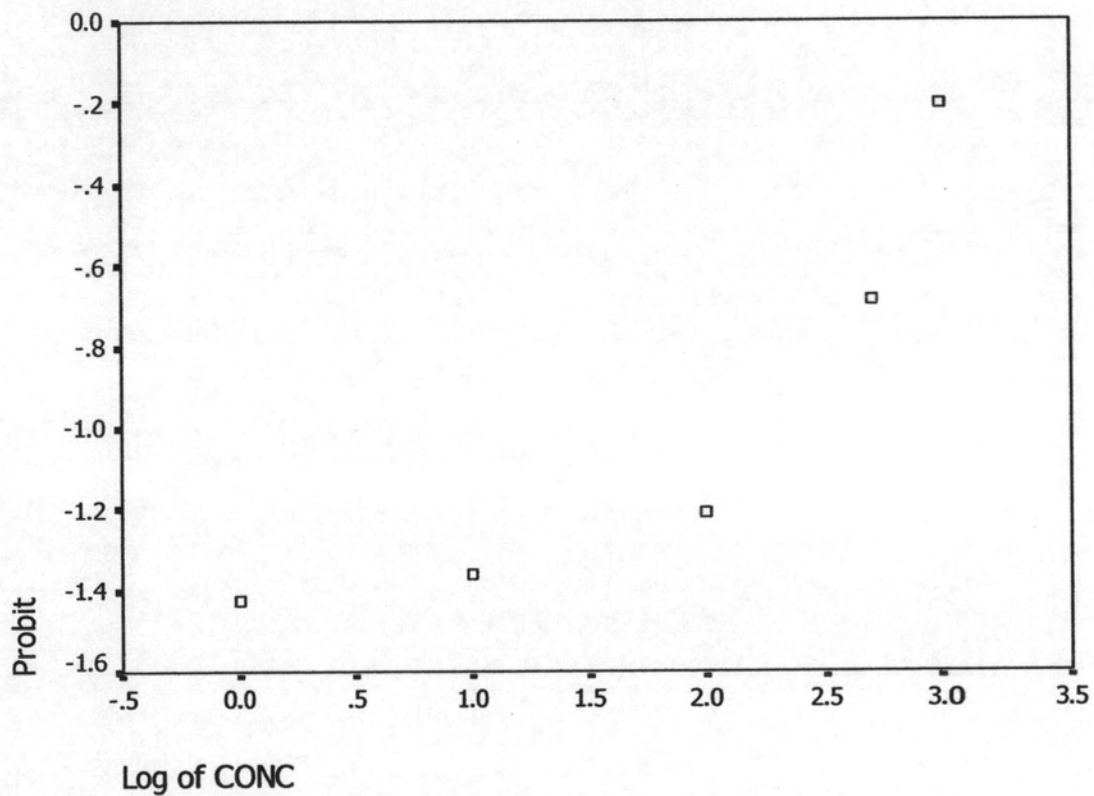
CONC	Number of Subjects	Observed Responses	Expected Responses	Residual	Prob
.00	100.0	7.7	4.497	3.173	.04497
1.00	100.0	8.7	10.005	-1.335	.10005
2.00	100.0	11.3	19.302	-7.972	.19302
2.70	100.0	24.7	28.192	-3.522	.28192
3.00	100.0	42.0	32.549	9.451	.32549

Confidence Limits for Effective CONC

Prob	CONC	95% Confidence Limits	
		Lower	Upper
.01	.03009	.	.
.02	.13681	.	.
.03	.35763	.	.
.04	.73683	.	.
.05	1.32657	.	.
.06	2.18818	.	.
.07	3.39358	.	.
.08	5.02684	.	.
.09	7.18593	.	.
.10	9.98467	.	.
.15	38.97390	.	.
.20	115.03542	.	.
.25	291.13824	.	.
.30	670.26431	.	.
.35	1451.54035	.	.
.40	3021.79209	.	.
.45	6142.63319	.	.
.50	12346.95690	.	.
.55	24817.91443	.	.
.60	50449.31620	.	.
.65	105024.53147	.	.
.70	227443.62691	.	.
.75	523625.28985	.	.
.80	1325220.95763	.	.

.85	3911524.27706	.	.
.90	15268135.1108	.	.
.91	21214689.0332	.	.
.92	30326656.0854	.	.
.93	44922290.3746	.	.
.94	69668601.7331	.	.
.95	114918279.666	.	.
.96	206894891.391	.	.
.97	426268486.292	.	.
.98	1114302401.48	.	.
.99	5066998615.28	.	.

Probit Transformed Responses



Fraction 7

DATA Information

5 unweighted cases accepted.

1 cases rejected because of missing data.

0 cases are in the control group.

0 cases rejected because LOG-transform can't be done.

MODEL Information

ONLY Normal Sigmoid is requested.

Parameter estimates converged after 14 iterations.

Optimal solution found.

Parameter Estimates (PROBIT model: $(\text{PROBIT}(p)) = \text{Intercept} + \text{BX}$):

	Regression Coeff.	Standard Error	Coeff./S.E.
CONC	.00647	.07154	.09040

	Intercept	Standard Error	Intercept/S.E.
	-1.36022	.14802	-9.18966

Pearson Goodness-of-Fit Chi Square = .285 DF = 3 P = .963

Since Goodness-of-Fit Chi square is NOT significant, no heterogeneity factor is used in the calculation of confidence limits.

*

Observed and Expected Frequencies

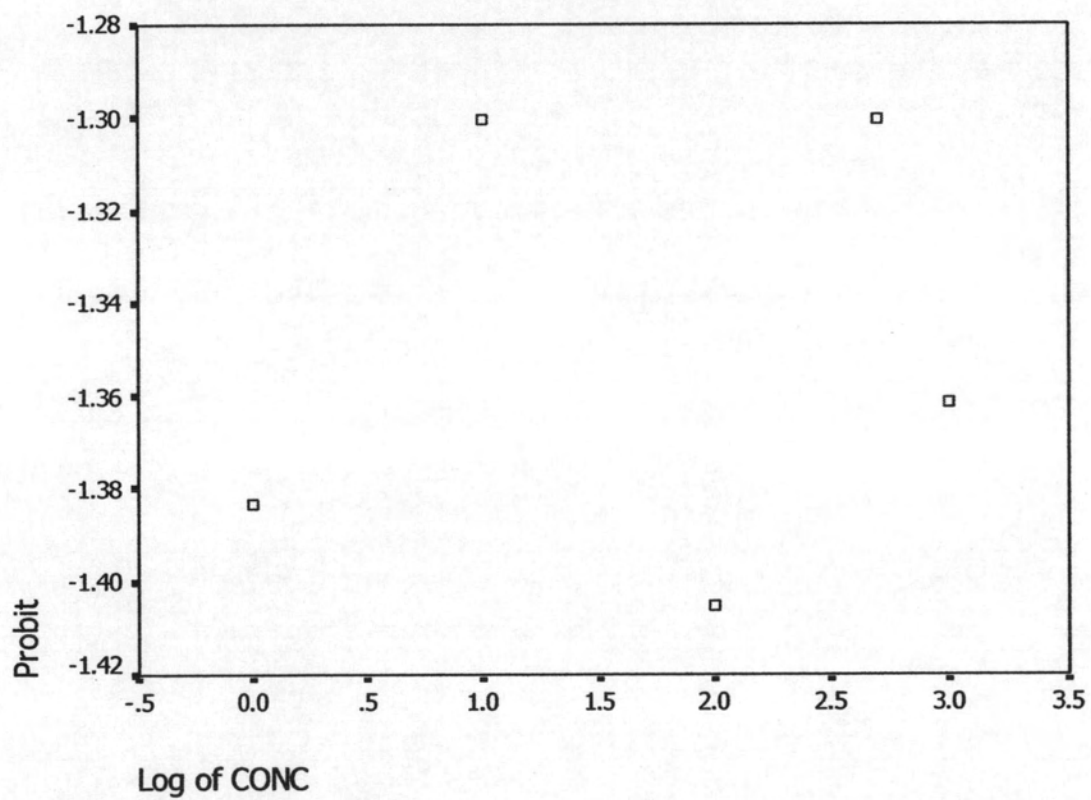
CONC	Number of Subjects	Observed Responses	Expected Responses	Residual	Prob
.00	100.0	8.3	8.688	-.358	.08688
1.00	100.0	9.7	8.791	.879	.08791
2.00	100.0	8.0	8.894	-.894	.08894
2.70	100.0	9.7	8.967	.703	.08967
3.00	100.0	8.7	8.999	-.329	.08999

Confidence Limits for Effective CONC

Prob	CONC	95% Confidence Limits	
		Lower	Upper
.01	4.141206-150	.	.
.02	5.842571-108	.	.
.03	3.229207E-81	.	.
.04	4.230881E-61	.	.
.05	9.779821E-45	.	.
.06	8.290486E-31	.	.
.07	1.351854E-18	.	.
.08	.00000	.	.
.09	1024.01627	.	.
.10	1460145258072	.	.
.15	1.160837E+50	.	.
.20	1.537403E+80	.	.
.25	1.068553+106	.	.
.30	1.720751+129	.	.
.35	5.500343+150	.	.
.40	1.400298+171	.	.
.45	7.746358+190	.	.
.50	2.084294+210	.	.
.55	5.608159+229	.	.
.60	3.102398+249	.	.
.65	7.898199+269	.	.
.70	2.524642+291	.	.
.75	.	.	.

.80	.	.	.
.85	.	.	.
.90	.	.	.
.91	.	.	.
.92	.	.	.
.93	.	.	.
.94	.	.	.
.95	.	.	.
.96	.	.	.
.97	.	.	.
.98	.	.	.
.99	.	.	.

Probit Transformed Responses



VITA

Chayanee Ot-sup was born on July 13, 1979 in Tak province, Thailand. She obtained a Bachelor Degree of Biology from Faculty of Science, Mahidol University in 2003 and has studied for Master Degree of science Program in Biotechnology at Chulalongkorn University since 2006.