

REFERENCES

- ActionAid. (n.d.). *A Human Rights Approach to Development: Resource Book*
Bangalore India: Books for Change.
- Annabelle. 2005. Interview with KWO cross border project staff member on 29th June
2005. Mae La refugee camp, Thailand.
- Awatsaya, Panam. 2004. *Migrant Domestic Workers, from Burma to Thailand*,
Thailand: Institute for Population and Social Research.
- Aung, Naw. 2005. Case Report #5. Numerous interviews carried out June/July 2005.
Mae La refugee camp, Thailand.
- Aye, May. 2005. Case Report #4. Numerous interviews carried out June-August 2005.
Mae La refugee camp, Thailand.
- Aye, Naw La. 2004. Interview with the Zone C Safehouse director on 5th July 2005.
Mae La refugee camp, Thailand.
- BBC. 2004. *Women 'bearing the brunt of war'* 8 December. [Online]. Available from:
<http://www.peacewomen.org/news/International/Dec04/> [2005, Jan 17].
- Bunge, Frederica M. 1983. *Burma: A country study*. Foreign Area Studies, The
American University: United States government.
- Calman, Leslie J., 1992. *Toward Empowerment: Women and Movement Politics in
India*. San Francisco: Westview Press.
- Dia, Ma. 2005. Interview with chairperson of Muslim Women's Organization of Burma
on 5th July 2005. Mae La refugee camp, Thailand.

- Firmly. 2005. Interview with the former KWO secretary on 28th June 2005. Mae La refugee camp, Mae Sot, Thailand.
- Gardam, Judith & Charlesworth, Hilary. 2000. Protection of Women in Armed Conflict, *Human Rights Quarterly* 22: 148-166.
- GTZ. 2001. *Towards Gender Mainstreaming in Crisis Prevention and Conflict Management*. Eschborn, Germany: Deutsche Gesellschaft für.
- Guyaw, Ler Gow. 2005. Interview with the KWO committee chairperson on 28th June 2005. Mae La refugee camp, Thailand.
- Henderson, Conway W. 2004, The Political Repression of Women *Human Rights Quarterly* 26: 1028-1049.
- Henn, Thi Thi. 2005. Interview with the IDP from Karen state on 24th June 2005. KWO office, Mae Sot, Thailand
- Htoo, Eh Paw. 2005. Case Report #1. Numerous interviews done throughout June/July 2005. Mae La refugee camp, Thailand.
- Human Rights Watch. 2004. *Out of Sight, Out of Mind: Thai Policy toward Burmese Refugees 16*: 2 Human Rights Watch, Asia Division [Online]. Available from www.hrw.org [2005, Jan 5]
- Human Rights Watch. 1998. *Unwanted and Unprotected: Burmese Refugees in Thailand*, Human Rights Watch Report.
- ICRW International Center for Research on Women. 1998, *After the Peace: Women in Post-Conflict Reconstruction*. Washington, DC, USA: ICRW.
- Karl, Marilee. 1995. *Women and Empowerment: Participation and Decision Making*. London: Zed Books Ltd.

- Kimotho, Rose. 2005. [Personal communication]. 26th June.
- K'tay, Oo. 2005. Interview with the former sewing teacher on 4th July 2005. Mae La refugee camp, Thailand.
- KWO. 2004. *Empowerment, Equality, Freedom*. Karen Women's Organization Brochure, Thailand.
- KWO. 2004. *Shattering Silences: Karen Women speak out about Burmese Military Regime's use of Rape as a Strategy of War in Karen State*. Thailand: KWO.
- Lee, Sangkook. 2001. *The Adaptation and Identities of the Karen Refugees: A Case Study of Mae La Refugee Camp in Northern Thailand*. Seoul Korea: Seoul National University.
- Leen, Adeline Chiang Hsu. 2002. *Beyond Humanitarianism: Power and NGO-Karen Relations*. Singapore: Department of Sociology, National University of Singapore.
- Lintner, Bertil. 1994. *Burma in Revolt: Opium and Insurgency since 1948*. Chiang Mai: Silkworm Books.
- Martin, Susan Forbes. 1991. *Refugee Women*. New Jersey, USA: Zed Books Ltd.
- Meiling, Lynn. 2005. Interview with the TOPS staff on 7th July 2005, Mae Sot, Thailand.
- Myint, Ler Gow. 2004. Case Report #2. Numerous interviews done throughout June/July 2005. Mae La refugee camp, Thailand.
- Naw, Anglene. 2001. *Aung San and the struggle for Burmese independence*. Chiang Mai: Silkworm Books.



- Nor, Nor. 2005. Interview with the KWO weaving program participant on 3rd July 2005. Mae La refugee camp, Thailand.
- Paw, Naw K'nyaw. 2005. Interview with the KWO staff member on 23rd June 2005, KWO office, Mae Sot, Thailand.
- Paw, Nelly. 2005. Interview with the nursery school teacher on 4th July 2005. Mae La refugee camp, Thailand.
- Pelosi, Anna. 2005. Interview with UNHCR staff on 8 July 2005. Mae Sot, Thailand.
- Poe, Toe. 2003. Case Report #3. Numerous interviews carried out in June 2005. KWO office, Mae Sot, Thailand.
- Saha, K C. 2005, *Learning from Empowerment of Sri Lankan refugees in India*. [Online]. Available from: www.fmreview.org/FMRpdfs/FMR20/FMR2014.pdf [2005, Jan 13]
- Steinberg, David I. 1982. *Burma: A Socialist Nation of Southeast Asia*. Boulder Colorado: Westview Press.
- SWAN. 2002. *License to Rape: The Burmese military regime's use of sexual violence in the ongoing war in Shan State*. Thailand: SWAN.
- Thornton, Philip. 2005. [Personal Communication]. June 30th.
- Thwe, Moe Neing. 2005. Interview with current KWO secretary on 5th July 2005. Mae La refugee camp, Thailand.
- Tinker, Hugh. 1967. *The Union of Burma: A study of the first years of independence, fourth edition*. London England: Oxford University Press.
- TBBC. 2005. *Thailand Burma Border Consortium Relief Programme: July to December 2004*. Thailand: TBBC.

- Theis, Joachim. 2004. *Promoting Rights-Based Approaches: Experiences and Ideas from Asia and the Pacific*. Bangkok: Save the Children.
- UNHCR. 1991. *Guidelines On The Protection of Refugee Women*. Geneva
- UNHCR. 2001. *A Practical Guide to Empowerment: UNHCR Good Practices on Gender Equality Mainstreaming*. Geneva
- UNHCR. 2002a. *Refugee Women and Mainstreaming a Gender Equality Perspective*. *Refugee Survey Quarterly*, 21: 87-95. From UToronto database [2004, Dec 3rd].
- UNHCR. 2002b. *Improving the Security of Refugee and Displaced Women*. *Refugee Survey Quarterly*, 21, 116-124. From UToronto database [2004, Dec 28th].
- UNHCR. 2002. *Global Consultations on International Protection: Refugee Women*. *Refugee Survey Quarterly*, Special Issue.
- UNHCR. 2003. *Sexual and Gender-Based Violence against Refugees, Returnees and Internally Displaced Person: Guidelines for Prevention and Response*, UNHCR.
- UNHCR. 2004. *UNHCR in Thailand: Protection and Assistance Provided to Survivors of Sexual and Gender Based Violence in the Camps on the Thai-Myanmar Border*
- UNHCR. 2005. *UNHCR Good Practices on Gender Equality Mainstreaming: A Practical Guide to Empowerment*. UN, Geneva.
- Van der Stouwe, Marc. 2005. Interview with the ZOA staff member on 8 July 2005. Mae Sot, Thailand.
- Vungsiriphisal, Premjai. 2005. *Refugee Children, the Victims of Conflict* paper presented at IASFM international conference on forced migration and part of a

research project named “Children Caught in Conflict”, Asian Research Center for Migration, Chulalongkorn University, Bangkok.

Way, Ler Bway. 2005. Interview with the KWO staff member in charge of health and education on 3rd July 2005. Mae La refugee camp, Thailand.

Win, Kanbawza. 1997. *Comparative study of the two military juntas. Thailand and Burma: Second Edition*. CPDSK Publication, Bangkok.

Win, Saw Aung. 2005. Interview with the DARE staff member on 6th July 2005. Mae La refugee camp, Thailand.

Women of Burma. 2005. [Online] Available from: www.womenofburma.org [2005, June 14]

Women of Burma. 2000. *Shadow CEDAW Report for Burma Thailand: The Women’s Organizations of Burma*.

Won, Nang Lao Liang. 2004. *Women Human Rights Defenders*. Organized by APWLD and AI. [Online] Available from: www.womenofburma.org/statement&release/whrd.doc [2004, Nov. 11]

ZOA. 2003. *ZOA Refugee Care, Annual Report*, The Netherlands: ZOA Refugee Care.

APPENDICES

APPENDIX A: FIGURES

FIGURE 1 Children playing by the stream, Mae La Camp, Dec 2004



FIGURE 2 Karen Women's Organization staff members, Mae La Camp, June 2005



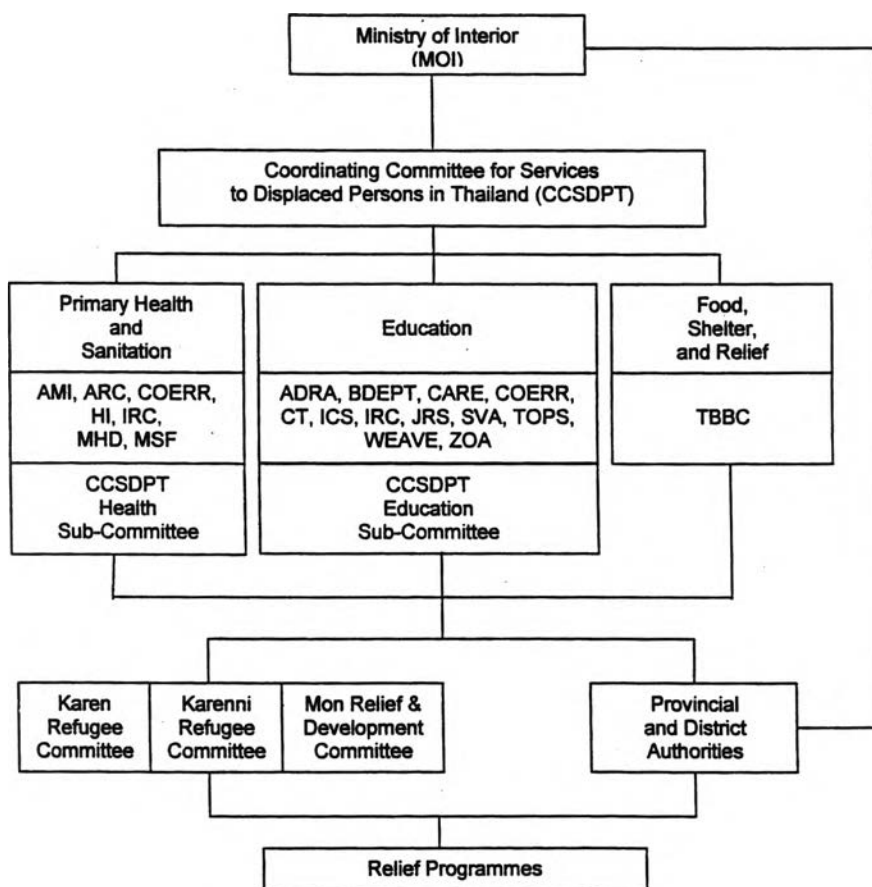
FIGURE 5 Waiting for clean water in Mae La camp. Water is usually available for only one hour per day at each pump



FIGURE 6 Daytime in Mae La Camp

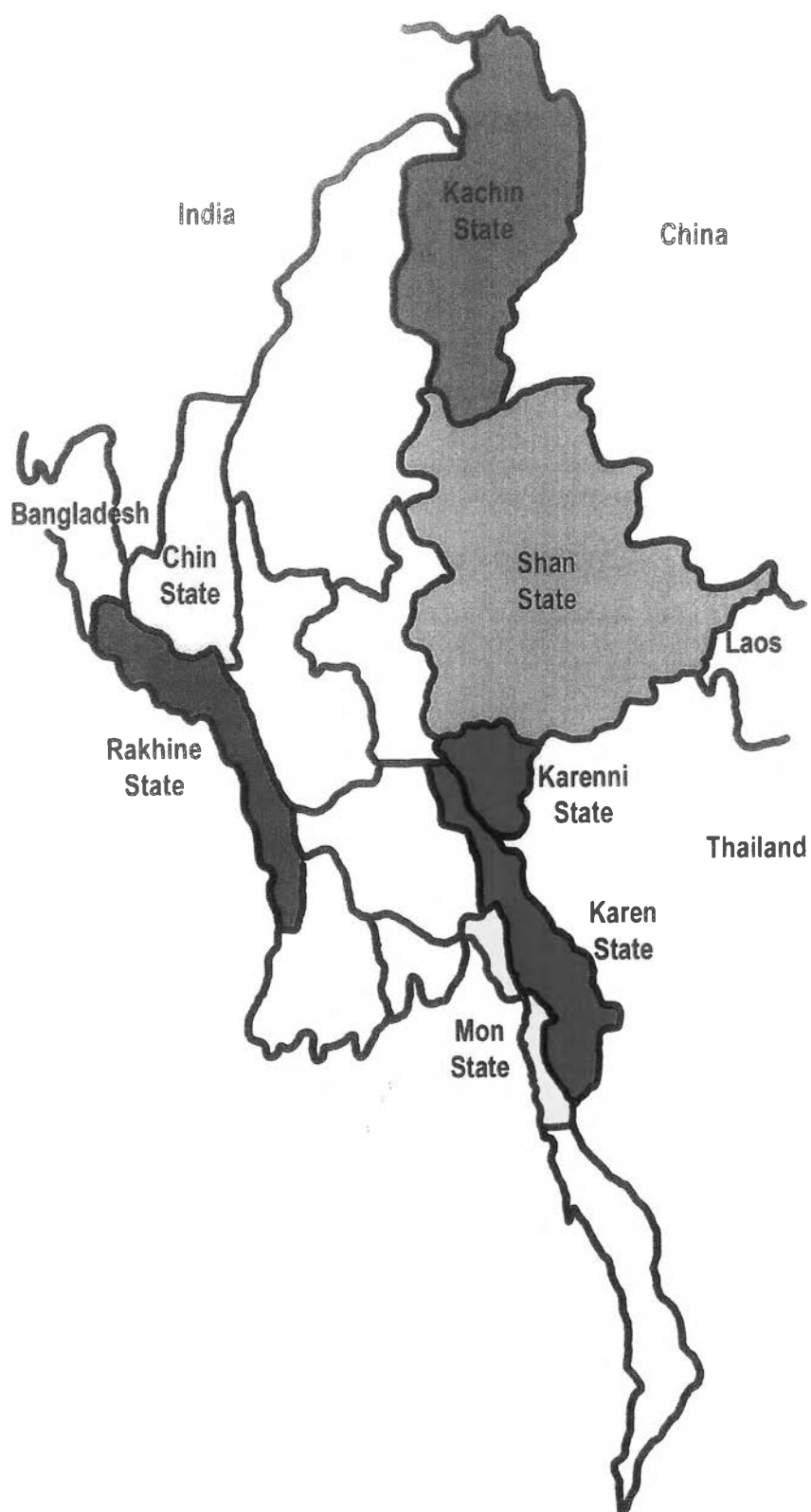
APPENDIX B: CHARTS

Structure of Relief Assistance

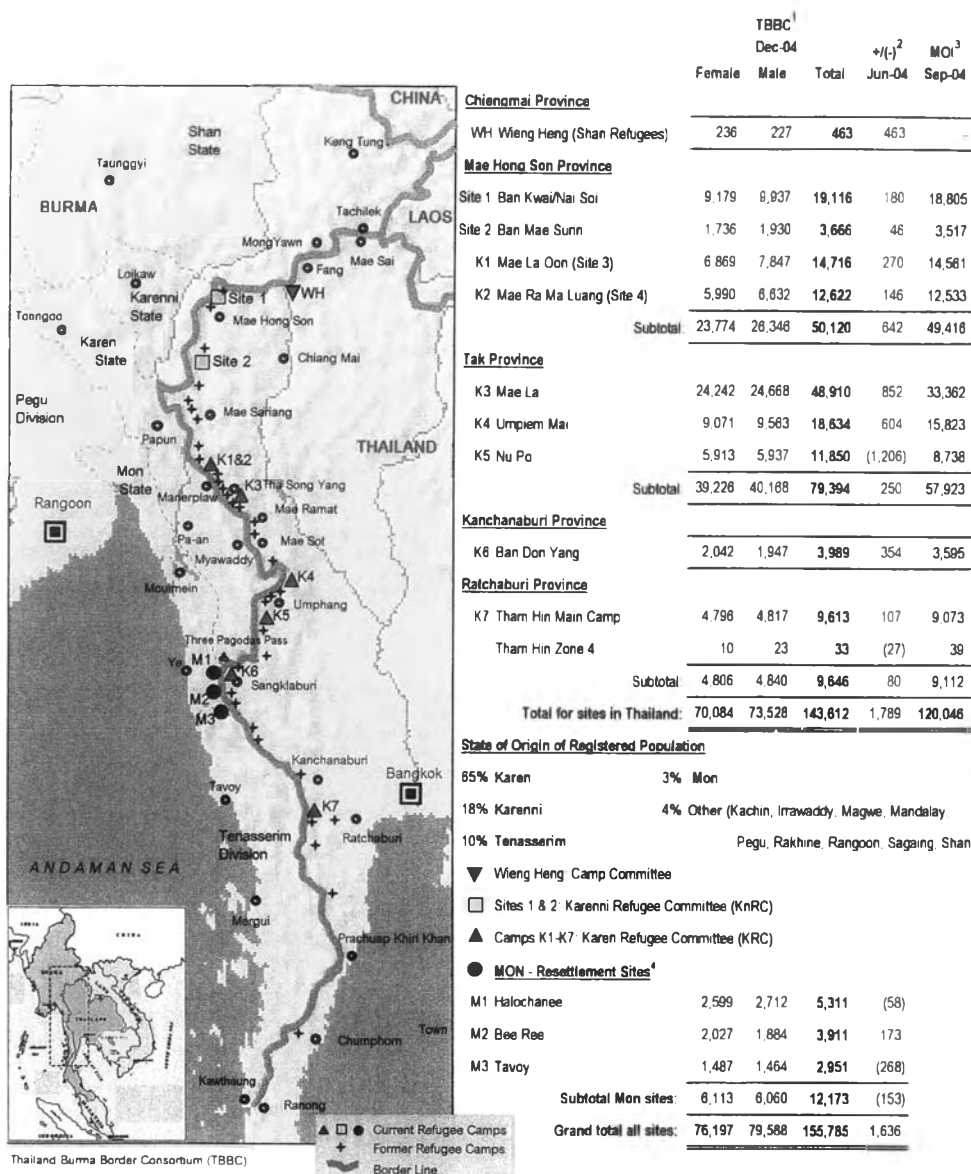


- ADRA - Adventist Development and Relief Agency
- AMI - Aide Medicale Internationale
- ARC - ARC International
- BDEPT - Burma Distance Education Programme-Thailand
- CARE - Community Addiction Recovery and Education Project
- COERR - Catholic Office for Emergency Relief and Refugees
- CT - Consortium Thailand
- HI - Handicap International
- ICS - Internationaal Christelijk Steunfonds Asia
- IRC - International Rescue Committee
- JRS - Jesuit Refugee Service
- MHD - Malteser Germany
- MSF - Medecins Sans Frontieres – France
- SVA - Shanti Volunteer Association
- TBBC - Thailand Burma Border Consortium
- TOPS - Taipei Overseas Peace Service
- WEAVE - Women's Education for Advancement and Empowerment
- ZOA - ZOA Refugee Care The Netherlands

APPENDIX C: MAPS



BURMESE BORDER REFUGEE SITES WITH POPULATION FIGURES - December 2004



CCSDPT AGENCY SERVICES TO BURMESE BORDER CAMPS - December 2004

UNHCR has offices in Mae Hong Son, Mae Sot and Kanchanaburi with a monitoring/protection mandate.



Mae Hong Son Province

Site	Food, Shelter & Relief	Primary Health & Sanitation	Education	Gender
Site 1 Ban Kwai/Mae Soi	TBBC	COERR HI IRC	COERR HI IRC SVA WEAVE ZOA	COERR IRC TBBC WEAVE
Site 2 Ban Mae Sunn	TBBC	COERR HI IRC	COERR HI IRC JRS WEAVE ZOA	COERR IRC TBBC WEAVE
K1 Mae La Oon (Site 3)	TBBC	COERR HI IRC MHD	COERR CT HI SVA TOPS ZOA	COERR MHD TBBC
K2 Mae Ra Ma Luang (Site 4)	TBBC	COERR HI IRC MHD	COERR CT HI SVA TOPS WEAVE ZOA	COERR MHD TBBC

Tak Province

K3 Mae La	TBBC	COERR HI IRC MSF TOPS	ADRA CT HI ICS SVA TOPS WEAVE ZOA	COERR ICS MSF TBBC
K4 Umpiem Mai	TBBC	AMI ARC COERR HI IRC TOPS	CT HI ICS SVA TOPS WEAVE ZOA	AMI ARC COERR ICS TBBC
K5 Nu Po	TBBC	AMI ARC COERR HI IRC TOPS	CT HI SVA TOPS ZOA	AMI ARC COERR TBBC

Kanchanaburi Province

K6 Ban Don Yang	TBBC	ARC COERR HI IRC MSF	HI SVA ZOA	ARC COERR MSF TBBC
-----------------	------	----------------------	------------	--------------------

Ratchaburi Province

K7 Tham Hin Man Camp	TBBC	COERR HI IRC MSF	HI SVA ZOA	COERR MSF TBBC
----------------------	------	------------------	------------	----------------

Mon Resettlement Sites

M1 Halachanea	TBBC	MSF	COERR	COERR
M2 Bee Roe	TBBC	MSF	COERR	COERR
M3 Tavoy	TBBC	MSF	COERR	COERR

- ADRA Adventist Development and Relief Agency
- AMI Aide Medicale Internationale
- ARC American Refugee Committee
- COERR Catholic Office for Emergency Relief and Refugees
- CT Consortium Thailand
- HI Handicap International
- ICMC International Catholic Migration Commission
- ICS Internationaal Christelijk Steunfonds
- IRC International Rescue Committee
- JRS Jesuit Refugee Service
- MHD Malteser Germany
- MSF-F Medecins Sans Frontieres-France
- SVA Shanti Volunteer Association
- TBBC Thailand Burma Border Consortium
- TOPS Taipei Overseas Peace Service
- WEAVE Women's Education for Advancement and Empowerment

BIOGRAPHY

Kimberly Angela Yvonne Brown was born in Ottawa, Canada on 7 July 1979. She later moved to Calgary, Alberta with her family where she completed high school before moving to Vancouver, B.C. for her undergraduate degree. At the University of British Columbia she completed a Bachelor of Arts, majoring in Psychology. After three years of work and travel she was hired for a CIDA funded internship which placed her in Bangkok, Thailand. After the completion of the internship she enrolled in the Master of Arts in International Development Studies (MAIDS) program at Chulalongkorn University in Bangkok.

