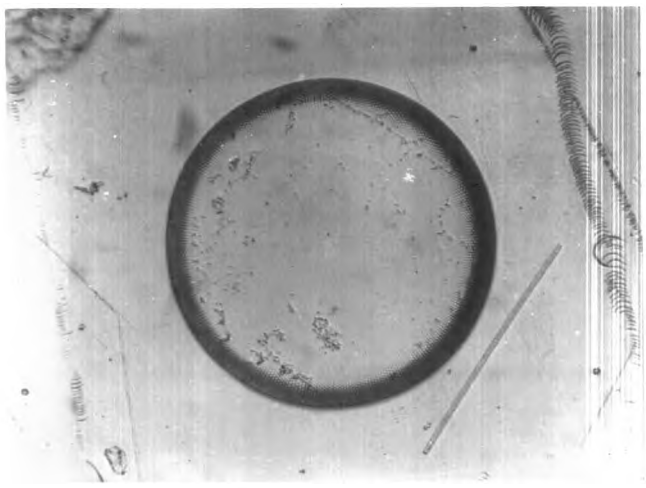
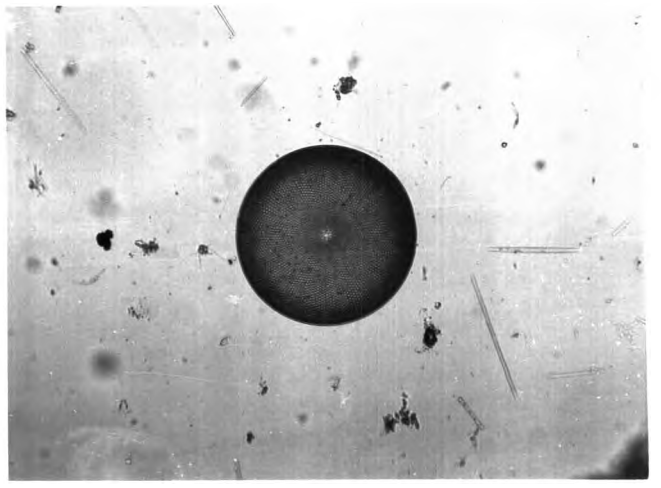


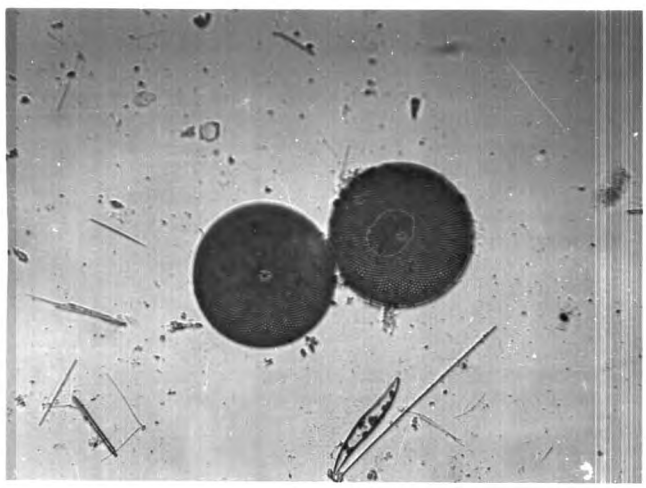
แผนก ก.
อาหารปลา
(แพลงก์ตอนจำพวกพืช)



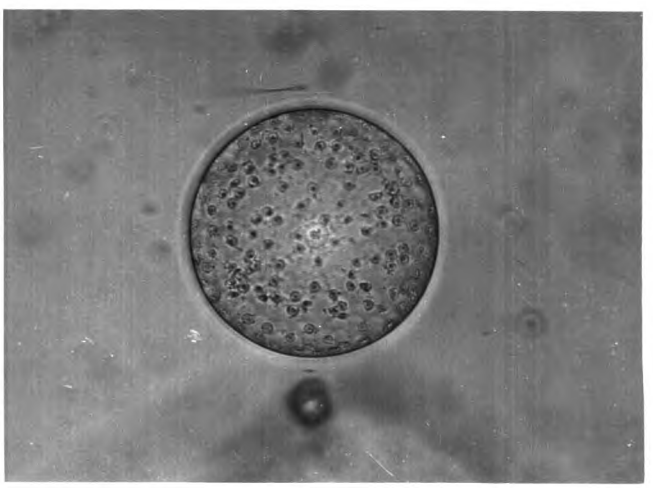
Rhizosolenia alata



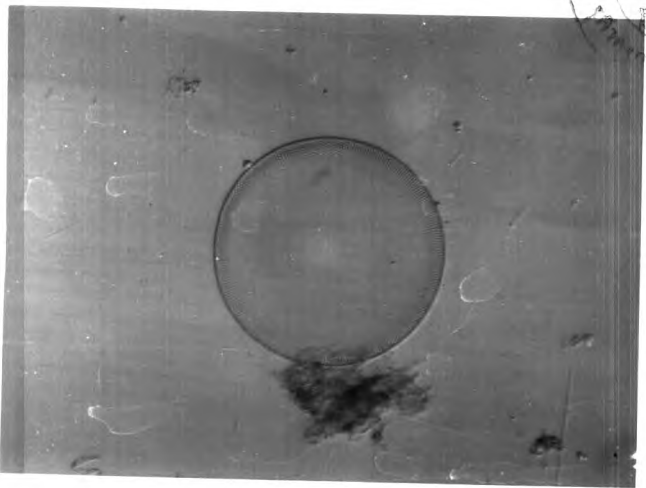
Rhizosolenia saloar avis



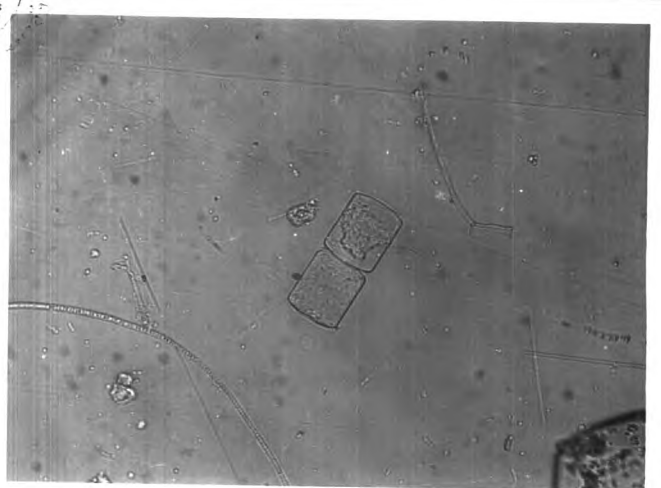
Rhizosolenia styliformis



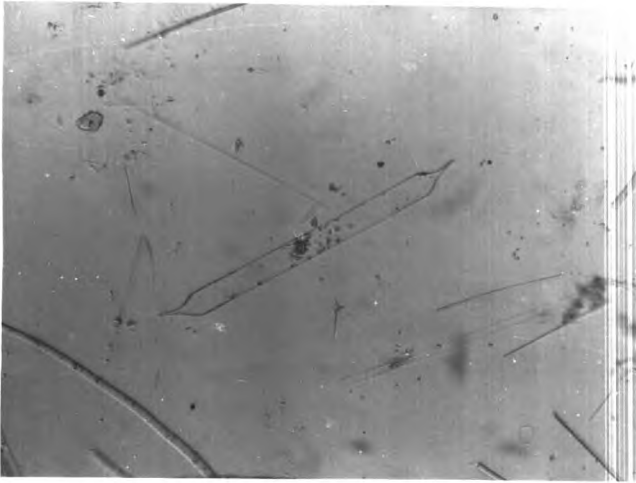
Charteceus coarctatus



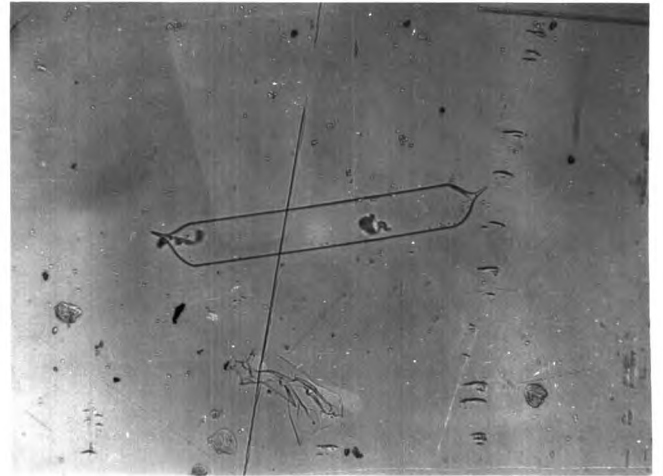
Hemiaulus sinensis



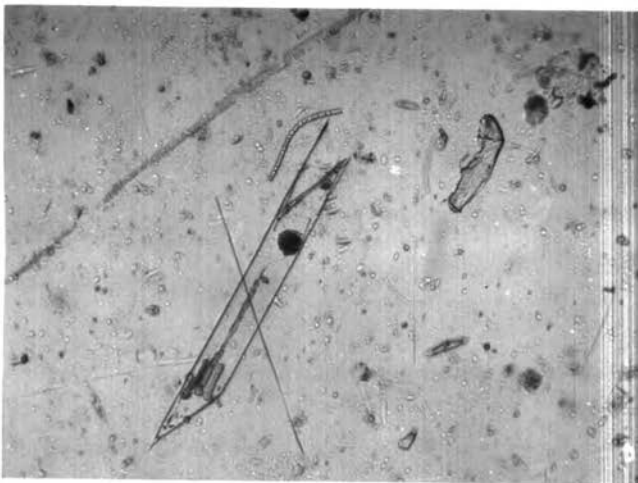
Pleuresigna sp.



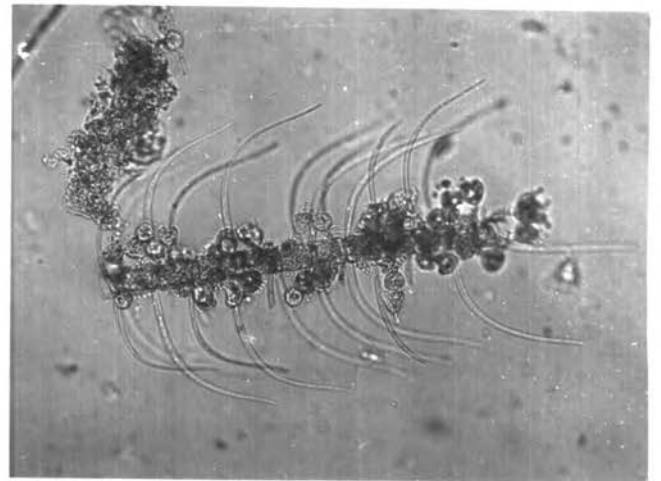
Rhizosolenia alata



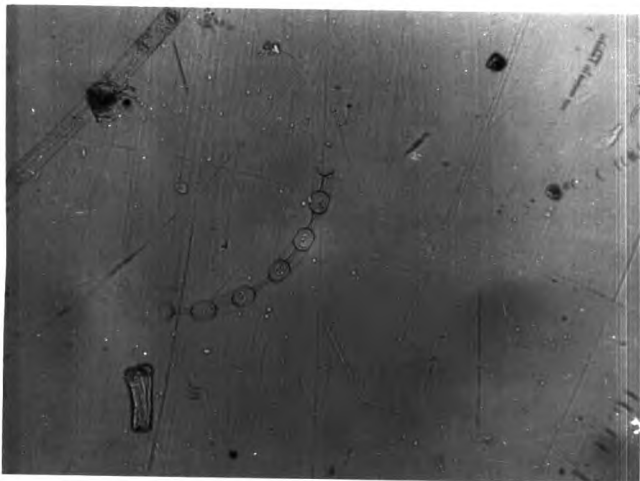
Rhizosolenia calcar avis



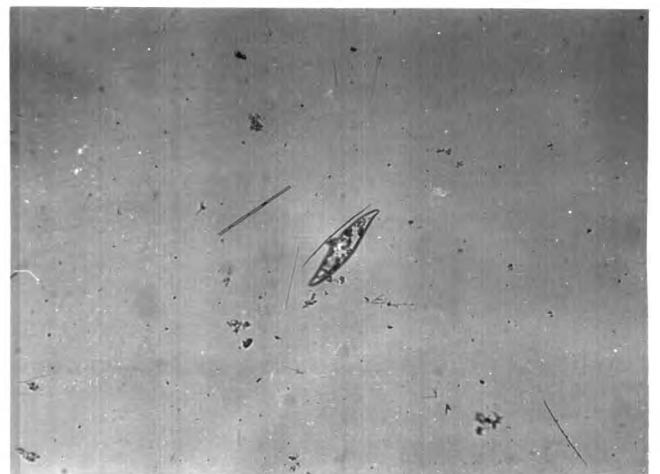
Rhizosolenia styliformis



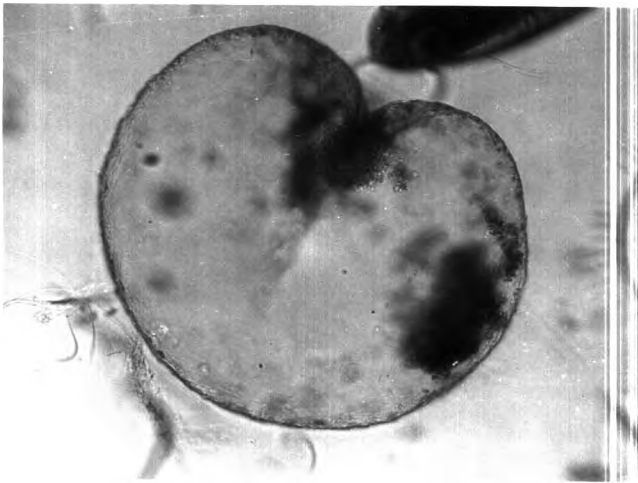
Chaetoceros coarctatus



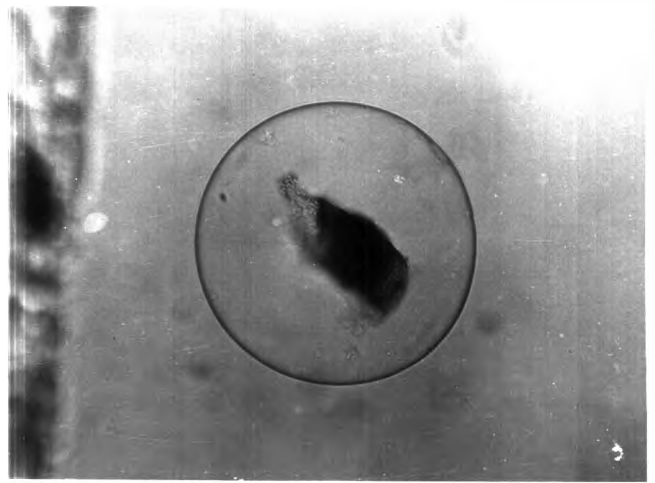
Hemiaulus sinensis



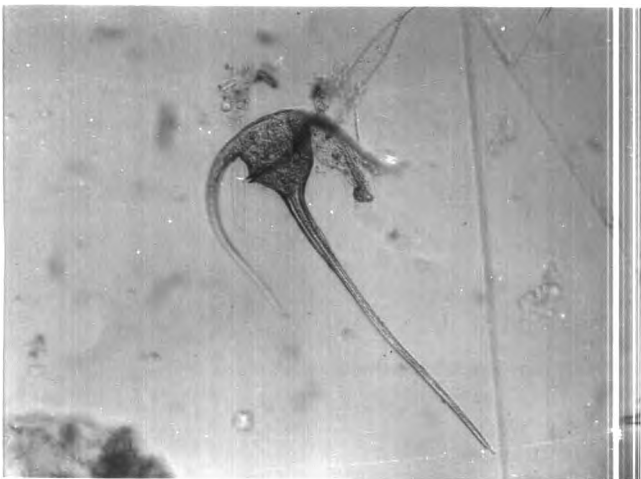
Pleurosigma sp.



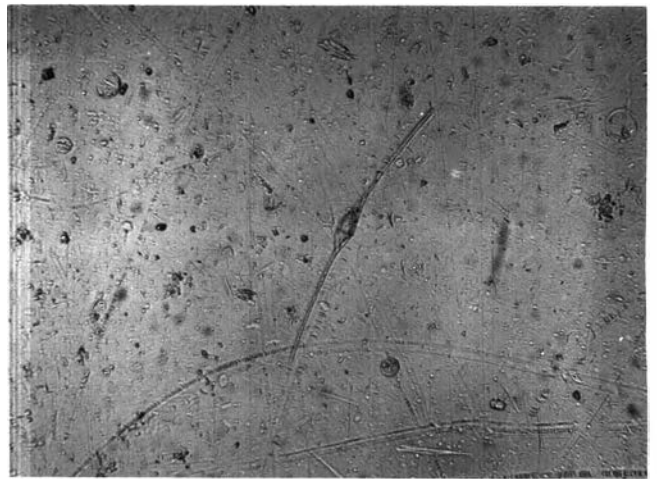
Neetiluca scintillans



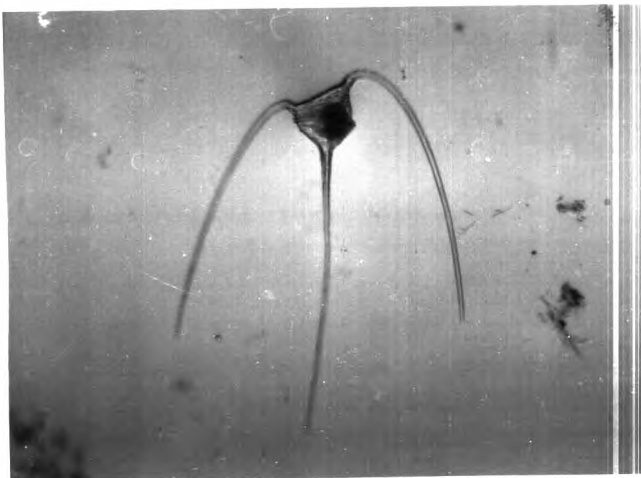
Pyrocystis neetiluca



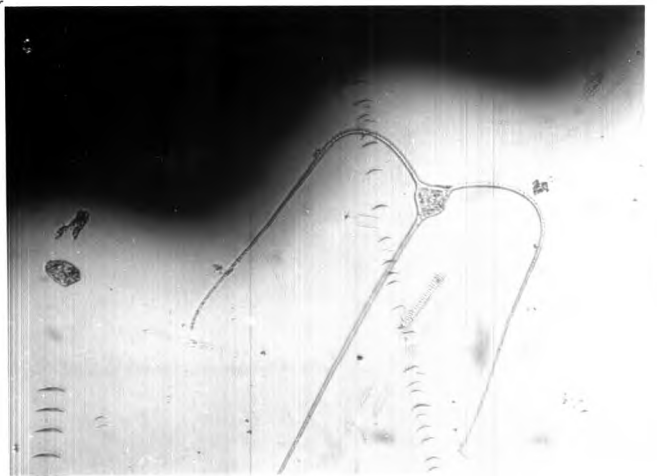
Ceratium axiale



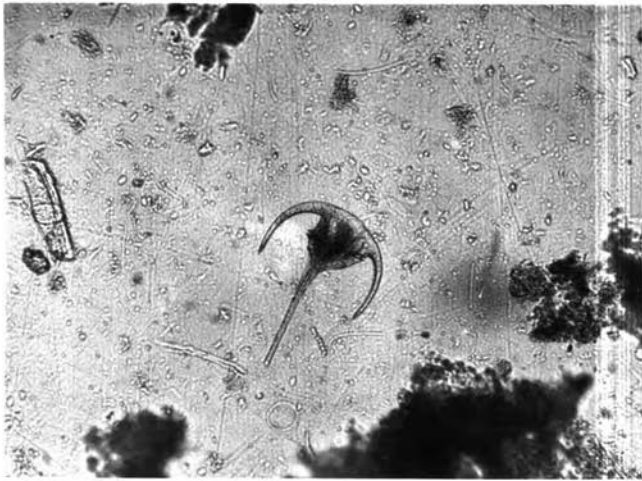
Ceratium fusus



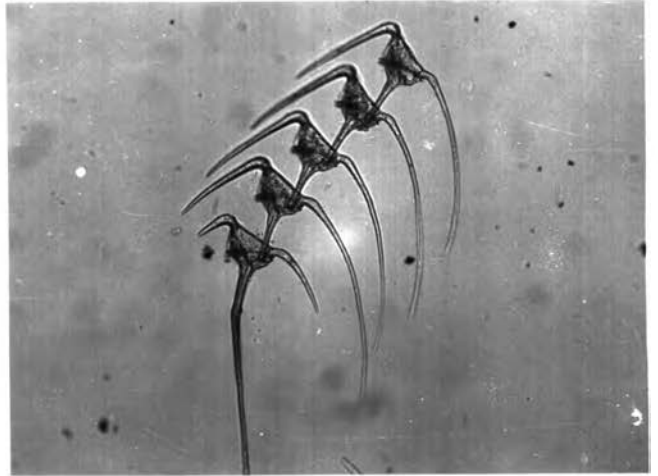
Ceratium tenuis var. buceres



Ceratium trichoceres



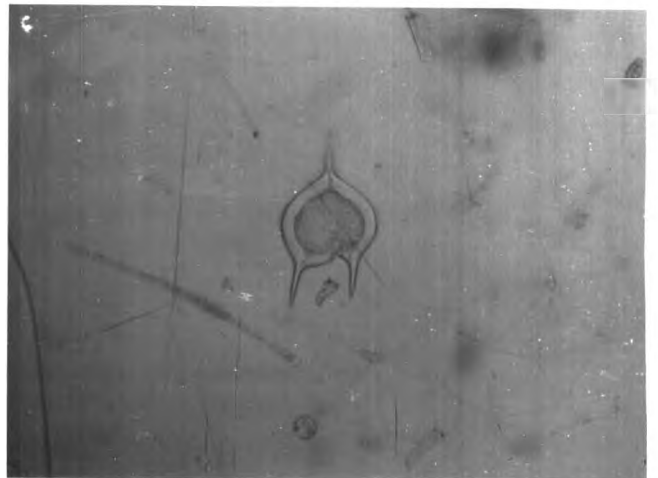
Ceratium tripos



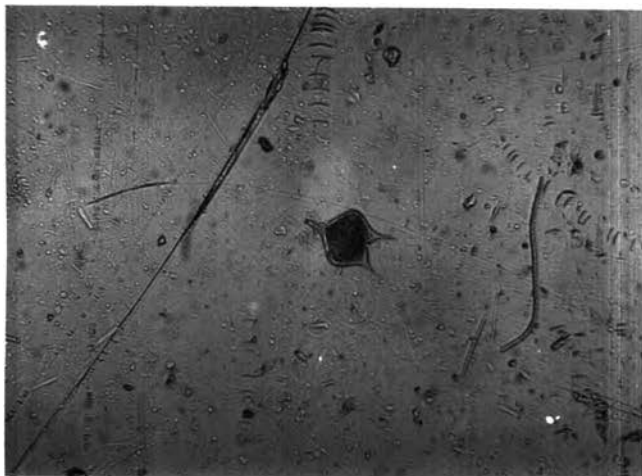
Ceratium sunstranum



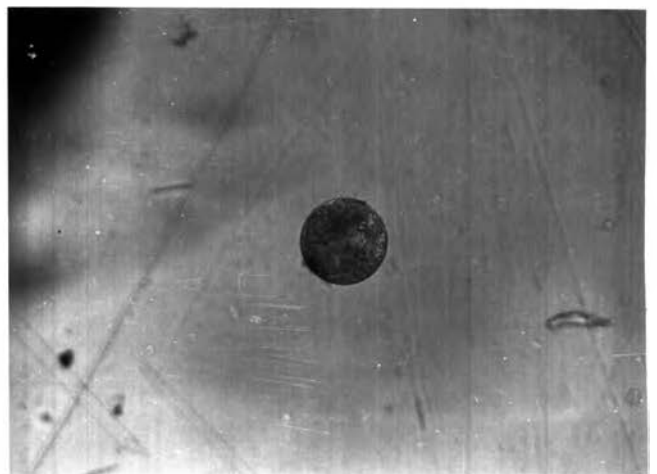
Dinophysis sp.



Peridinium depressum

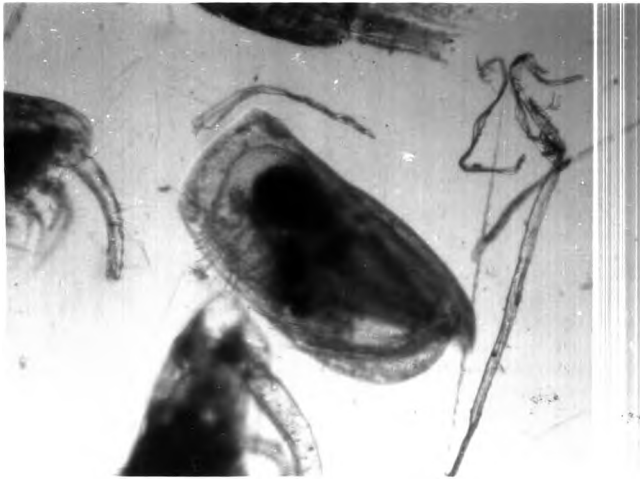


Peridinium coccineum



Peridinium sphaericum

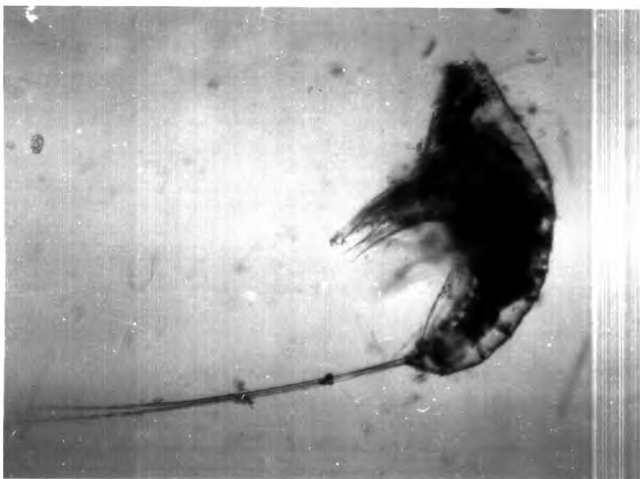
หมวด ๗.
อาหารปลา
(แพลงตอนจิวารักษ์)



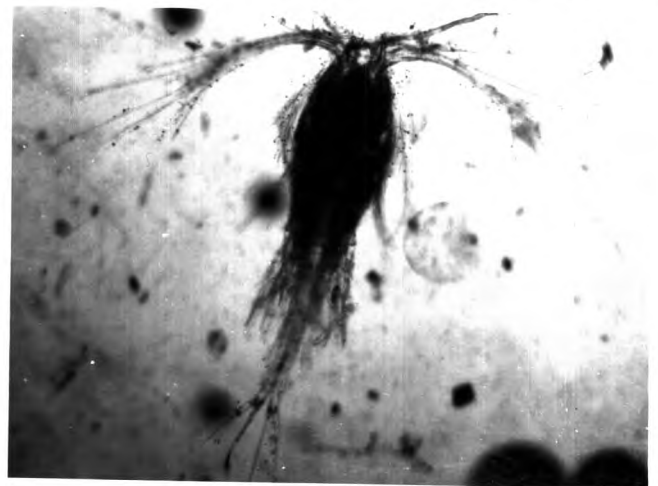
Conchocilia sp.



Ceryceus sp.



Nuterpe sp.



Oithona plumifera

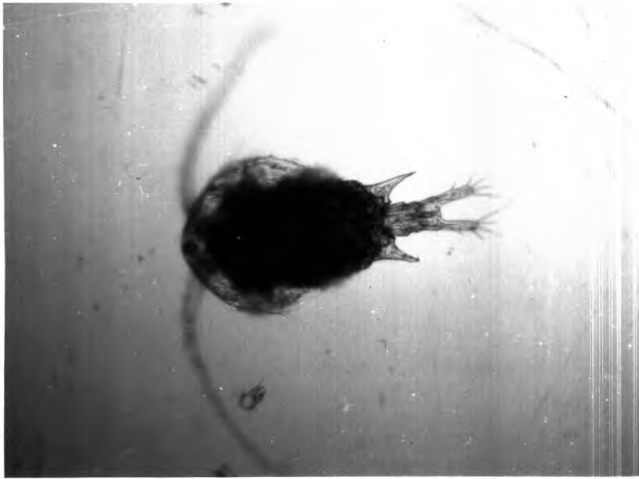


Oncaea venustus

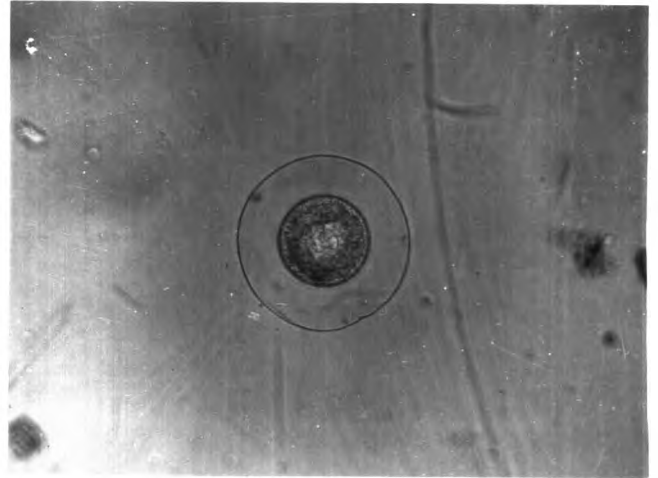


Paracalanus parvus

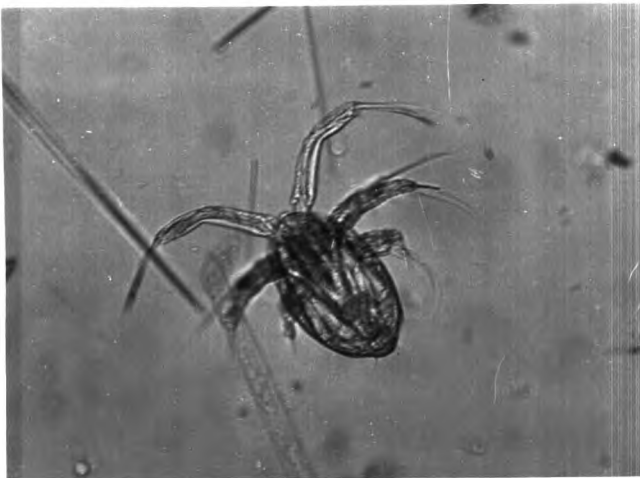
ผนวก ข.
อาหารปลา
(แพลงตอนจำพวกสัตว์)



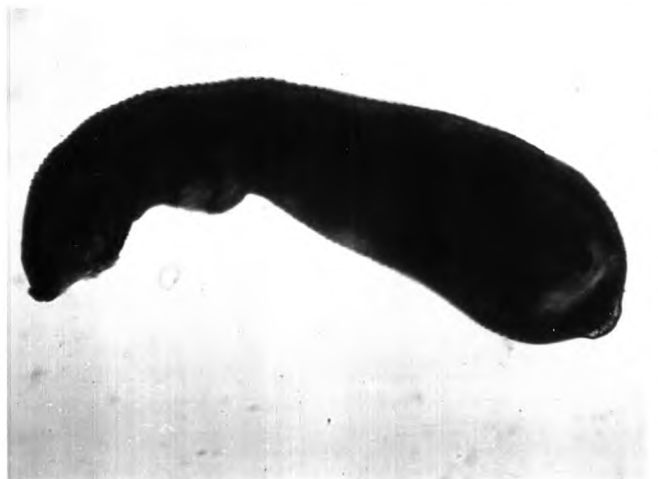
Temora sp.



copepod egg



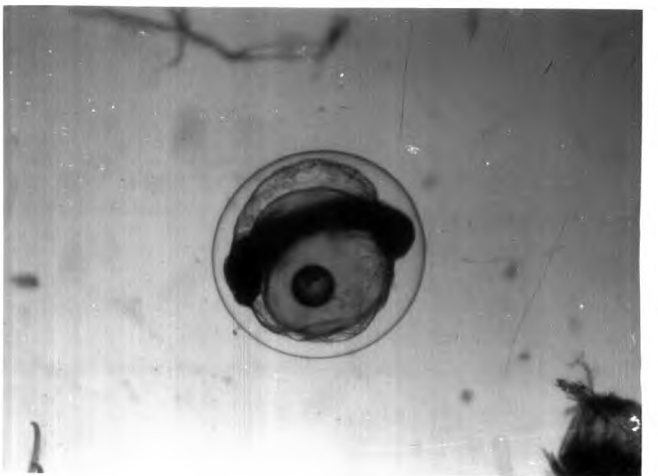
copepod larva



polychaete worm



polychaete worm



fish egg

บรรณานุกรม

กรมประมง งานสอบสวนปลา ๒๕๐๖-๒๕๐๘ สถานวิจัยประมงทะเล เอกสารเผยแพร่
ฉบับที่ ๔, ๒๕๐๘

วีระวัฒน์ หงสกุล ปลาในอ่าวไทย สถานวิจัยประมงทะเล เอกสารเผยแพร่ ฉบับที่ ๑
๒๕๐๘

อำพัน เหลือสินทรัพย์ "การศึกษาเกี่ยวกับการกินอาหารของปลาในอ่าวไทย" ๒๕๐๖

ALLEN, G.H. and W. ARON

1958. Food of salmonoid fishes of the western north
Pacific Ocean. United States, Dept. Int. Fish
and Wildl. Serv.-- Fish. No. 237 : 1-11

NOYAMA, T.

1958. On the discharge of stomach contents concerning
jack-mackerel Trachurus japonicus. Bull. Seikai
Reg. Fish. Res. Lab. Nagasaki Japan. No. 96 :
29-32

NOYAMA, T.

1958. On the amount of food taken by the jack-mackerel
Trachurus japonicus. Bull. Seikai Reg. Fish. Res.
Lab. Nagasaki, Japan. No. 97 : 35-45

BANDHUKUL, S.

1961. Tagging of Rastrelliger in Thailand.

Thai. Fish. Gaz., 14 (1) : 51-59

BERRY, F.H., I. BARRETT

1963. Gill raker analysis and speciation in the thread

herring genus Opisthonema, Int. Amer. Trop. Tuna

Comm. Bull., 7 (2) : 113-153

BHIMACHAR, B.S., F.A.Sc. and et al.

1952. Observations on the food and feeding of the Indian

mackerel, Rastrelliger kanagurta (Cuvier). Pub-

lished with the permission of the Gulf Research

Officer, Cent. Mar. Fish. Res. Stat., Mandapam

Camp, India.

BRINTON, E.

1963. Zooplankton abundance in the Gulf of Thailand

and South China Sea. Ecology of the Gulf of Thai-

land and South China Sea. Scripps Institution of

Oceanography, SIO-Ref. 63-60, p. 70-74

CHIRASTIT, C.

1962. Report on tagging experiments of chub mackerel

(Rastrelliger neglectus) in the Gulf of Thailand,

1961. IPFC/C 62/Tech.52

CUPP, E. E.

1943. Marine plankton diatom of the west coast of North America. Univ. Cal. Press, Berkeley and Los Angeles.

DAKIN, W.J., A. N. COLEFEX,

1940. The plankton of the Australian coastal waters off New South Wales. Aust. Med. Pub. Co. Ltd. Seamer street, Glebe, N.S.W.

DAVIS, C.C.

1955. The marine and fresh water plankton. Mic. State Univ. Press. East Lansing Michigan.

DIXON, W.J., F. J. MASSEY,

1957. Introduction to statistical analysis.
2nd. ed. New York, McGraw-Hill, 488 p. illus, tables.

GEORGE, P. C.

1964. Our current knowledge on the food and feeding habits of the Indian mackerel, Rastrelliger kanagurta (C) Symposium Series I, Mar. Biolo. Ass. India, Mandapan Camp, India. Part : 569-573

HALSTEAD, B. W.

1958. Poisonous fishes. Pub., Heal. Rept. illus.
73 (4) : 302-312

HAND, C. H., L. BERNER, JR.

1959. Food of the Pacific sardine (Sardinops cacrulea)
Fish. Bull. Fish and Wildl. Serv. 60 (164) : 175-184

HARDY, A.C.

1956. The open sea. Houghton Mifflin Co. Boston.
The Riverside Press Cambridge.

HOLMES, R. W.

1962. The preparation of marine phytoplankton for
microscopic examination and enumeration on
molecular filters. United States, Dept. Int. Fish
and Wildl. Serv. -- Fish. No. 433 : 1-6

HUMPHREY, G.F.

1963. Chlorophyll a and c in culture of marine algae.
Aust. J. Mar. Freshw. Res. 14 (2) : 148-154

INABA, Y., Y. MORIOKA,

1966. Data on microplankton collected by vertical haul
with Indian Ocean standard net. Data Rec. Oceanogr.
Obs. Expt. Fish. No. 10 : 64-68

INABA, Y., Y. MORIOKA,

1966. Data on microplankton collected with Van Dorn water sampler. Data Rep. Oceanogr. Obs. Expt. Fish. No. 10 : 72-75

JEFFREY, S.W.

1965. Paper chromatographic separation of pigment in marine phytoplankton. Aust. J. Mar. Freshw. Res. 16 (3) : 307-313

KUMARAN, M.

1964. Symposium Series I, Mar. Biol. Ass., India Mandapam Camp, S. India, Part II : 586-590

1964. Studies on the food of Euthynnus affinis affinis (Cantor), Auxis thezard (Lacepede), Auxis thynnoides Bleeker and Sarda orientalis (Temminch and Schlegel). Symposium Series I, Mar. Biol. Ass. India, Mandapam Camp, S. India. Part II : 599-606

LURSINSAP, A.

1962. Preliminary survey of marine plankton found in the Gulf of Thailand. IPFC. Procs., 10 (2) : 1-7

Mc GINITTIE, G.E., NETTIE,

1949. Natural History of Marine Animals. McGraw Hill Book Co., Inc. N.Y.

MORI, T.

1937. The pelagic copepoda from the neighbouring waters of Japan. Yokendo.Co. Tokyo, Japan.

MORIOKA, Y.

1966. Data on plankton collected by simultaneous horizontal haul with six 56 cm. closing nets.
Data Rec. Oceanogr. Obs. Expt. Fish. No. 10 : 68-75

NEWELL, G.E; R.C. NEWELL,

1963. Marine plankton, a practical guide.
Anchor Press Ltd., in Tiptree, Essex on Smooth
Wove paper, 207 p.

OGAWA, N., K. MUTA AND et al.

1963. A study on the migration of the mackerels (Scomber japonicus and S. tapeinocephalus) based on tagging experiments in the East China Sea.
Bull. Seikai Reg. Fish. Res. Lab., Nagasaki,
Japan. No. 28 : 25-47

OKUBO, S.

1960. Plankton diatoms.
Shimmipon Co. 27 Shinyuku, Ichigaya Road, Tokyo,
Japan.

PARSONS, T.R., L.F. GIOVANDO AND et al.

1966. The advent of the spring bloom in the eastern subarctic Pacific Ocean. J. Fish. Res. Board. Canada, 23 (4) : 539-546

PRADHAN, L.B.

1956. Mackerel fisheries of Karwar. Indian J. Fish., 3 (1) : 141-85

PREFECTURE, M.

1951 - 52. Studies of plankton.
Mei Prefecture Univ. Japan.

RAJU, G.

1964. Observation on the food and feeding habits of the oceanic skipjack, Kutsuwonus pelamis (Linnaeus) of the Laecadive Sea during the years 1958-59. Symposium Series I, Mar. Biol. Ass. India, Mandapam Camp, S. India. Part II : 607-625

RAO, K.V. NARAYAMA

1964. Observation on the bionomics of the Indian mackerel, Rastrelliger kanagurta (C.), caught in the Lawson's Bay, mar maltair, Andhra Coast. Symposium Series I, Mar. Biol. Ass. India, Mandapam Camp, S. India. Part II : 574-585

RAO, K. SRINIVASA

1964. Observation on the food and feeding habits of *Scomberomorus guttatus* (Bloch and Schneider) and juveniles of *S. lineolatus* (Cuvier and Valenciennes) and *S. commerson* (Lacepede) from the Waltair Coast. Symposium Series I, Mar. Biol. Ass. India, Mandapam Camp, S. India. Part II : 591-598

RAO, SUBRA D.V.

1965. The measurement of total carbon dioxide in dilute tropical waters. Aust. J. Mar. Freshw. Res. 16 (3) : 273-280

RIDENHOUR, R.L.

1960. Abundance, growth and food of young game fish in clear lake, Iowa, 1949 to 1957. Iowa State J. Sc. 35 (1) : 1-23

RILEY, J.D.

1966. Marine fish culture in Britain VII Plaice (*Pleuronectus platessa* L.) Post - larval feeding on *Artemia salina* L. nauplii and the effects of varying feeding levels. Mar. Fish Culture Britain, 30 (2) : 204-221

ROSA, Jr. H.

1956. Synopsis of the data on the species of the genus Rastrelliger Jordan & Starks, 1908 Mimeographed, IPFC. Meeting of the sub-committee on Rastrelliger (App. 7 iv.)

SHIRAIISHI, Y., M. TAKAGI,

1955. Food habit of trout in Lake Yunoko, with reference to the morphology of body and digestive organs. Bull. Freshw. Fish. Res. Lab. 5 (1) : 1-20

SMIRNOVA, L.I.

1956. O fittoplanktone seveno- zapadol chasti tikhogo okeana. (The phytoplankton of the northwest part of the Pacific Ocean) Doklady Akad. Nauk. SSSR 109 (3) : 649-652

Southeast Asia Research Program Univ. of Calif.

1963. Ecology of the Gulf of Thailand and the South China Sea: a report on the results of the Naga Expedition, 1959 - 1961, 124 p. illus.

SUZUKI, T., K. MASUDA and et al.

1965. Variation of the catches and the volume of stomach contents of medium sized "Ku-chimidai" (Lethrinus ornatus Cuvier and Valenciennus) between day and

night as observed in the trawl grounds along the
Northwestern Coast of Australia. Bull. Fac. Fish.
Hokkaido Univ. 16 (1) : 29-44

TAKANO, H.

1962. Notes on epiphytic diatoms upon sea-weeds from
Japan. J. of the Oceanogr. Soci. of Japan
18 (1) : 29-33

TANAKA, T.

1965. Studies on some marine algae from southern Japan
VI. Mem. Fac. Fish., Kagoshima Univ. No. 14 : 52-71

THRAIKILL, J.R.

1963. Zooplankton volume of the Pacific Coast, 1959
United States, Dept. Int. Fish and Wildl. Serv.-
Fish. No. 414 : 1-77

THOMAS, P.T.

1964. Food of Katsuwonus pelamis (Linn.) and Neothunnus
macropterus (Temminch and Schlegel) from Minicoy
waters during the season 1960-61. Symposium Series
I, Mar. Biol. Ass. India, Mandapam Camp, India.
Part II : 626-630

TSUIITA, T., M. KONDO,

1957. Some contributions to the ecology of the mackerel and the oceanography of the fishing grounds in the East China Sea, No. 14 : 7-47

WELLS, L.

1960. Seasonal abundance and vertical movements of planktonic crustacea in Lake Michigan. Fish. Bull. Fish and Wildl. Serv. 60 (172) : 343-369

WOOD, E.J.F.

1963. Dinoflagellates in the Australian Region, (II, III) Div. Fish. and Oceanogr. Tech. Paper No. 14 Commonw. Scien. and Indust. Res. Organ., Aust. No. 17

YABE, K., I. TSUJINO and et al.

1966. Studies on the compounds specific for each group of marine algae IV occurrence of homarine and trigonelline in red algae, Trichocarpus crinitus. Bull. Fac. Fish. Hokkaido Univ. 16 (4) : 273-277

YAMAJI, I.

1959. The plankton of Japanese coastal waters. Hoikusha, 1 - Chome Uehonmachi, Higashiku. Osaka, Japan.

YAMASHITA, H.

1957. Relations of the foods of sardine, jack mackerel, mackerel and so on in the waters adjacent to west Kyushu, Bull. Seikai Reg. Fish. Res. Lab. Nagasaki, Japan. No. 11 : 45-53

YAMASHITA, H.

1957. On the relation between the food and the shape of the intestines of sardine, jack mackerel, mackerel and their kindred species found in the west coast of Kyushu, Bull. Seikai Reg. Fish. Res. Lab., Nagasaki, Japan. No. 11 : 55-68

YASUDA, F.

1960. The feeding mechanism in young fishes. Rec. Oceanogr. Works in Japan. 5 (2) : 132-138

YASUDA, F.

1960. The relationship of the gill structure and food habits of some coastal fishes in Japan. Rec. Oceanogr. Works in Japan. 5 (2) : 139-152

YASUDA, F.

1960. The feeding mechanism in some carnivorous fishes. Rec. Oceanogr. Works in Japan. 5 (2) : 153-160