

## REFERENCES

- Bai, F. W., Anderson, W. A. and Moo-Young, M. (2008) Ethanol fermentation technologies from sugar and starch feedstocks. Biotechnology Advances, 26(1), 89-105.
- Balat, M. (2011) Production of bioethanol from lignocellulosic materials via the biochemical pathway: A review. Energy Conversion and Management, 52(2), 858-875.
- Balat, M., Balat, H. and Öz, C. (2008) Progress in bioethanol processing. Progress in Energy and Combustion Science, 34(5), 551-573.
- Ballesteros, I., Negro, M. J., Oliva, J. M., Cabañas, A., Manzanares, P. and Ballesteros, M. (2006) Ethanol production from steam-explosion pretreated wheat straw. Applied Biochemistry and Biotechnology, 129-132, 496-508.
- Bloyd, C. (2009) An Update on Ethanol Production and Utilization in Thailand. Pacific Northwest National Laboratory Richland, Washington 99352, ((October 2009).).
- Boonmanumsin, P., Treeboobpha, S., Jeamjumnunja, K., Luengnaruemitchai, A., Chaisuwan, T. and Wongkasemjit, S. (2012) Release of monomeric sugars from *Miscanthus sinensis* by microwave-assisted ammonia and phosphoric acid treatments. Bioresource Technology, 103(1), 425-431.
- Buranov, A. U. and Mazza, G. (2008) Lignin in straw of herbaceous crops. Industrial Crops and Products, 28(3), 237-259.
- Chandel, A., Chandrasekhar, G., Lakshmi Narasu, M. and Venkateswar Rao, L. (2010) Simultaneous saccharification and fermentation (SSF) of aqueous ammonia pretreated *Saccharum spontaneum* (wild sugarcane) for second generation ethanol production. Sugar Tech, 12(2), 125-132.
- Chandel, A. K., Singh, O. V., Narasu, M. L. and Rao, L. V. (2011) Bioconversion of *Saccharum spontaneum* (wild sugarcane) hemicellulosic hydrolysate into ethanol by mono and co-cultures of *Pichia stipitis* NCIM3498 and thermotolerant *Saccharomyces cerevisiae*-VS3. New Biotechnology, 28(6), 593-599.

- Chandel, A. K., Singh, O. V., Venkateswar Rao, L., Chandrasekhar, G. and Lakshmi Narasu, M. (2011) Bioconversion of novel substrate *Saccharum spontaneum*, a weedy material, into ethanol by *Pichia stipitis* NCIM3498. Bioresource Technology, 102(2), 1709-1714.
- Chen, M., Zhao, J. and Xia, L. (2009) Comparison of four different chemical pretreatments of corn stover for enhancing enzymatic digestibility. Biomass and Bioenergy, 33(10), 1381-1385.
- Cloete, S. M. T. E. (2002) Lignocellulose biodegradation: Fundamentals and applications. Re/Views in Environmental Science & Bio/Technology 1105-114. de la Hoz, A. (2011) Microwave Heating as a Tool for Sustainable Chemistry. Edited by Nicholas E. Leadbeater. ChemSusChem, 4(5), 666-666.
- Esteghlalian, A., Hashimoto, A. G., Fenske, J. J. and Penner, M. H. (1997) Modeling and optimization of the dilute-sulfuric-acid pretreatment of corn stover, poplar and switchgrass. Bioresource Technology, 59(2-3), 129-136.
- Faix, O., Meier, D. and Beinhoff, O. (1989) Analysis of lignocelluloses and lignins from *Arundo donax* L. and *Miscanthus sinensis* Anderss., and hydroliquefaction of *Miscanthus*. Biomass, 18(2), 109-126.
- Feldman, D. (1985) Wood—chemistry, ultrastructure, reactions, by D. Fengel and G. Wegener, Walter de Gruyter, Berlin and New York, 1984, 613 pp. Price: 245 DM. Journal of Polymer Science: Polymer Letters Edition, 23(11), 601-602.
- Feng, D., Liu, H., Li, F., Jiang, P. and Qin, S. (2011) Optimization of dilute acid hydrolysis of *Enteromorpha*. Chinese Journal of Oceanology and Limnology, 29(6), 1243-1248.
- Francisco, L., Juan Carlos, G., Antonio, P., M. Javier, F., Minerva A.M, Z. and Gil, G. (2010) Chemical and energetic characterization of species with a high-biomass production: Fractionation of their components. Environmental Progress & Sustainable Energy, 29(4), 499-509.

- Gírio, F. M., Fonseca, C., Carvalheiro, F., Duarte, L. C., Marques, S. and Bogel-Lukasik, R. (2010) Hemicelluloses for fuel ethanol: A review. Bioresource Technology, 101(13), 4775-4800.
- Guo, G.-L., Chen, W.-H., Chen, W.-H., Men, L.-C. and Hwang, W.-S. (2008) Characterization of dilute acid pretreatment of silvergrass for ethanol production. Bioresource Technology, 99(14), 6046-6053.
- Harmsen, P., Huijgen, W., Bermudez, L. and Bakker, R. (2010). Literature review of physical and chemical pretreatment processes for lignocellulosic biomass. Wageningen: Wageningen UR, Food & Biobased Research.
- Heaton, E. A., Dohleman, F. G. and Long, S. P. (2008) Meeting US biofuel goals with less land: the potential of Miscanthus. Global Change Biology, 14(9), 2000-2014.
- Hendriks, A. T. W. M. and Zeeman, G. (2009) Pretreatments to enhance the digestibility of lignocellulosic biomass. Bioresource Technology, 100(1), 10-18.
- Hu, Z. and Wen, Z. (2008) Enhancing enzymatic digestibility of switchgrass by microwave-assisted alkali pretreatment. Biochemical Engineering Journal, 38(3), 369-378.
- Jeon, Y. J., Xun, Z. and Rogers, P. L. (2010) Comparative evaluations of cellulosic raw materials for second generation bioethanol production. Letters in Applied Microbiology, 51(5), 518-524.
- Kataria, R. and Ghosh, S. (2011) Saccharification of Kans grass using enzyme mixture from *Trichoderma reesei* for bioethanol production. Bioresource Technology, 102(21), 9970-9975.
- Kim, S. and Dale, B. (2002) Allocation procedure in ethanol production system from corn grain i. system expansion. The International Journal of Life Cycle Assessment, 7(4), 237-243.
- Kim, S. and Dale, B. E. (2004) Global potential bioethanol production from wasted crops and crop residues. Biomass and Bioenergy, 26(4), 361-375.
- Kumar, P., Barrett, D. M., Delwiche, M. J. and Stroeve, P. (2009) Methods for Pretreatment of Lignocellulosic Biomass for Efficient Hydrolysis and

- Biofuel Production. Industrial & Engineering Chemistry Research, 48(8), 3713-3729.
- Lee, J.-S., B. Parameswaran, et al. (2008) Recent developments of key technologies on cellulosic ethanol production. Journal of Scientific and Industrial Research, 67((November 2008)), 865-873.
- Li, C., Knierim, B., Manisseri, C., Arora, R., Scheller, H. V., Auer, M., Vogel, K. P., Simmons, B. A. and Singh, S. (2010) Comparison of dilute acid and ionic liquid pretreatment of switchgrass: Biomass recalcitrance, delignification and enzymatic saccharification. Bioresource Technology, 101(13), 4900-4906.
- Liao, W., Liu, Y., Liu, C., Wen, Z. and Chen, S. (2006) Acid hydrolysis of fibers from dairy manure. Bioresource Technology, 97(14), 1687-1695.
- Lin, Y. and Tanaka, S. (2006) Ethanol fermentation from biomass resources: current state and prospects. Applied Microbiology and Biotechnology, 69(6), 627-642.
- M. Wang, C. S., and D. Santini (1999) Effects of fuel ethanol use on fuel-cycle energy and greenhouse gas emissions. Center for Transportation Research, Energy Systems Division, Argonne National Laboratory, 9700 South Cass Avenue, Argonne, Illinois 60439, (ANL/ESD-38).
- Martin, C., Alriksson, B., Sjöde, A., Nilvebrant, N.-O. and Jönsson, L. (2007) Dilute sulfuric acid pretreatment of agricultural and agro-industrial residues for ethanol production. Applied Biochemistry and Biotechnology, 137-140(1), 339-352.
- McMillan James, D. (1994) Pretreatment of lignocellulosic biomass. In Michael E. Himmel, John O. Baker, and Ralph P. Overend (Eds.), Enzymatic conversion of biomass for fuels production. American Chemical Society. (pp. 292-324).
- Melo, E. and Kennedy, J. F. (1988) Cellulose hydrolysis (biotechnology monographs, Vol. 3) edited by L.-T. Fan, M. M. Gharpuray and Y.-H. Lee, Springer-Verlag, Berlin, Heidelberg, New York, London, Paris and Tokyo, 1987. pp.

- viii + 198, price DM168.00. ISBN 3-540-17671-3. British Polymer Journal, 20(6), 532-532.
- Mosier, N., Hendrickson, R., Ho, N., Sedlak, M. and Ladisch, M. R. (2005) Optimization of pH controlled liquid hot water pretreatment of corn stover. Bioresource Technology, 96(18), 1986-1993.
- Mosier, N., Wyman, C., Dale, B., Elander, R., Lee, Y. Y., Holtzapple, M. and Ladisch, M. (2005) Features of promising technologies for pretreatment of lignocellulosic biomass. Bioresource Technology, 96(6), 673-686.
- Mukhopadhyay, S., and Chatterjee, N. C. (2010) Bioconversion of water hyacinth hydrolysate into ethanol. BioResource, 5 (2), 1301-1310.
- Nei Pereira Jr., M. A. P. G. C., et al. (2008) Biomass of lignocellulosic composition for fuel ethanol production within the context of biorefinery. Rio de Janeiro: Escola de Química/UFRJ.
- Ooshima, H., Aso, K., Harano, Y. and Yamamoto, T. (1984) Microwave treatment of cellulosic materials for their enzymatic hydrolysis. Biotechnology Letters, 6(5), 289-294.
- O'Sullivan, A. (1997) Cellulose: the structure slowly unravels. Cellulose, 4(3), 173-207.
- Pandey, A., Larroche, C., Ricke, S., Dussap, C., Gnansounou, E. (2011) Biofuels : Alternative Feedstocks and Conversion Processes. Elsevier Inc.
- Pedersen, M. and Meyer, A. S. (2010) Lignocellulose pretreatment severity – relating pH to biomatrix opening. New Biotechnology, 27(6), 739-750.
- Prasertsan, S. and Sajjakulnukit, B. (2006) Biomass and biogas energy in Thailand: Potential, opportunity and barriers. Renewable Energy, 31(5), 599-610.
- Quintero, J. A., Rincón, L. E. and Cardona, C. A. (2011). Production of Bioethanol from Agroindustrial Residues as Feedstocks. In Ashok, P., Christian, L., Steven, C.R. et al, Biofuels. Amsterdam: Academic Press. (pp. 251-285).
- Ratsamee, S., Akaracharanya, A., Leeppatpiboon, N., Srinorakutara, T., Kitpreechavanich, V., and Tolieng, V. (2012) Purple guinea grass: Pretreatment and ethanol fermentation. BioResource, 7(2), 1891-1907.

- S.Chittibabu, K. R., M.Santhanmuthu (2011) Optimization of microwave assisted alkali pretreatment and enzymatic hydrolysis of Banana pseudostem for bioethanol production. 2nd International Conference on Environmental Science and Technology IPCBEE 6(V2-67-V62-71).
- Saha, B. (2003) Hemicellulose bioconversion. Journal of Industrial Microbiology & Biotechnology, 30(5), 279-291.
- Sajjakulnukit, B. (2001) Regional Seminar on Commercialization of Biomass Technology. Country paper: Thailand, Economic and Social Commission for Asia and Pacific, Guangzou, China(4-8 June 2001).
- Schanche, J.-S. (2003) Microwave synthesis solutions from personal chemistry. Molecular Diversity, 7(2), 291-298.
- Scordia, D., Cosentino, S. L. and Jeffries, T. W. (2010) Second generation bioethanol production from *Saccharum spontaneum* L. ssp. *aegyptiacum* (Willd.) Hack. Bioresource Technology, 101(14), 5358-5365.
- Scordia, D., Cosentino, S. L., Lee, J.-W. and Jeffries, T. W. (2011) Dilute oxalic acid pretreatment for biorefining giant reed (*Arundo donax* L.). Biomass and Bioenergy, 35(7), 3018-3024.
- Scordia, D., Cosentino, S. L., Lee, J.-W. and Jeffries, T. W. (2012) Bioconversion of giant reed (*Arundo donax* L.) hemicellulose hydrolysate to ethanol by *Scheffersomyces stipitis* CBS6054. Biomass and Bioenergy, 39(0), 296-305.
- Shapouri, H., J. A. Duffield, M.S. Graboski. (1995) Estimating the Net Energy Balance of Corn Ethanol. U.S. Department of Agriculture, Economic Research Service, AER-721(1995).
- Silalertruksa, T. and Gheewala, S. H. (2010) Security of feedstocks supply for future bio-ethanol production in Thailand. Energy Policy, 38(11), 7476-7486.
- Sluiter, J. and Sluiter, A. (2011) Summative Mass Closure: Laboratory analytical procedure (LAP) review and integration: feedstocks. NREL/TP-510-48087. Golden, CO: National Renewable Energy Laboratory.
- Sun, Y. and Cheng, J. (2002) Hydrolysis of lignocellulosic materials for ethanol production: a review. Bioresource Technology, 83(1), 1-11.

- Supaporn Sophonputtanaphoca, H. P. (2003) Weed as potential raw materials for the production of fuel alcohol. Ph.D. Thesis, Chulalongkorn University, 1-160.
- Mussatto, S.I. and Teixeira, J.A. (2010) Lignocellulose as raw material in fermentation processes. Current Research, Technology and Education Topics in Applied Microbiology and Microbial Biotechnology FORMATEX Microbiology Series N° 2, 2897-907.
- Treeboobpha, S. (2012) Two-stage microwave/chemical pretreatment process of Napier grass for monomeric sugar production. M.S. Thesis. The Petroleum and Petrochemical College, Chulalongkorn University, Bangkok, Thailand.
- Vidal, B., Jr., Dien, B., Ting, K. C. and Singh, V. (2011) Influence of Feedstock Particle Size on Lignocellulose Conversion—A Review. Applied Biochemistry and Biotechnology, 164(8), 1405-1421.
- Wang, B., Wang, X. and Feng, H. (2010) Deconstructing recalcitrant Miscanthus with alkaline peroxide and electrolyzed water. Bioresource Technology, 101(2), 752-760.
- Wianwiwat, S. and Asafu-Adjaye, J. (2011) Modelling the promotion of biomass use: A case study of Thailand. Energy, 36(3), 1735-1748.
- Yokoyama, S. and Matsumura, Y. (2008) The Asian Biomass Handbook. Japan: The Japan Institute of Energy.
- Yokoyama, S.-y., Ogi, T. and Nalampoon, A. (2000) Biomass energy potential in Thailand. Biomass and Bioenergy, 18(5), 405-410.
- Yoshida, M., Liu, Y., Uchida, S., Kawarada, K., Ukagami, Y., Ichinose, H., Kaneko, S. and Fukuda, K. (2008) Effects of Cellulose Crystallinity, Hemicellulose, and Lignin on the Enzymatic Hydrolysis of Miscanthus sinensis to Monosaccharides. Bioscience, Biotechnology, and Biochemistry, 72(3), 805-810.
- Zhang, Y.-H. P. and Lynd, L. R. (2004) Toward an aggregated understanding of enzymatic hydrolysis of cellulose: Noncomplexed cellulase systems. Biotechnology and Bioengineering, 88(7), 797-824.

- Zheng, Y., Pan, Z., Zhang, R. (2009) Biomass pretreatment for cellulosic ethanol production. International Journal of Agricultural and Biological Engineering, 2(3), 1-18.
- Zhu, S., Wu, Y., Yu, Z., Liao, J. and Zhang, Y. (2005) Pretreatment by microwave/alkali of rice straw and its enzymic hydrolysis. Process Biochemistry, 40(9), 3082-3086.
- Zhu, S., Wu, Y., Yu, Z., Zhang, X., Wang, C., Yu, F. and Jin, S. (2006) Production of ethanol from microwave-assisted alkali pretreated wheat straw. Process Biochemistry, 41(4), 869-873.
- Zhu, Z., Sathitsuksanoh, N., Vinzant, T., Schell, D. J., McMillan, J. D. and Zhang, Y. H. P. (2009) Comparative study of corn stover pretreated by dilute acid and cellulose solvent-based lignocellulose fractionation: Enzymatic hydrolysis, supramolecular structure, and substrate accessibility. Biotechnology and Bioengineering, 103(4), 715-724.



## APPENDICES

### Appendix A: The Monomeric Sugar Standard Curve of Glucose, Xylose, and Arabinose

The types of monomeric sugar in unknown sample were confirmed by comparing retention time, and the amounts of the monomeric sugar in liquid hydrolysate sample were measured by comparing the peak area with sugar standard used to prepare calibration curve between the peak area and the sugar concentration to obtain the equation used for detecting sugar concentrations. The calibration curve of glucose, xylose, and arabinose are shown below.

**Table A1** Peak and retention times of glucose standard

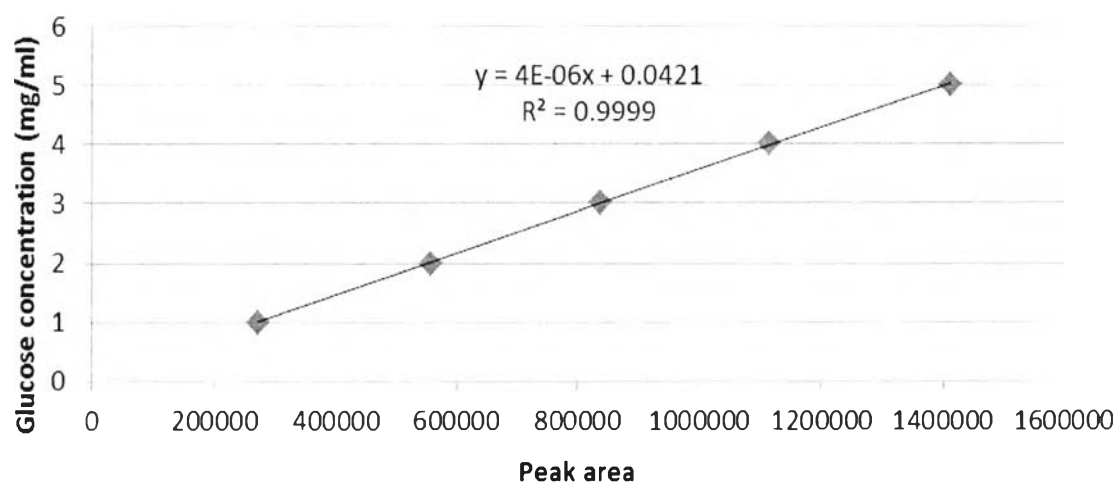
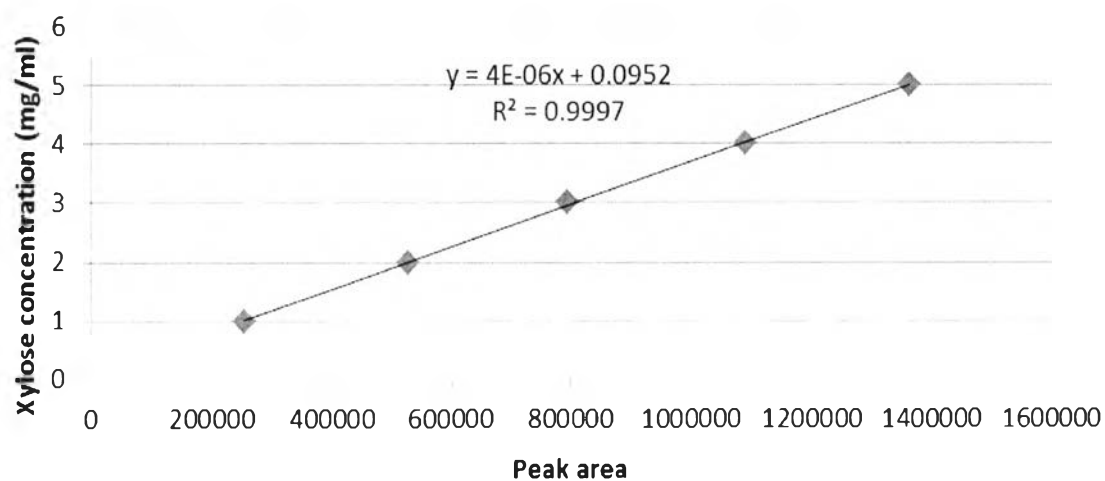
<b>Glucose Concentration (g/l)</b>	<b>Peak Area</b>	<b>Retention Time (min)</b>
1.0	273667	9.151
2.0	556739	9.161
3.0	837347	9.149
4.0	1116667	9.164
5.0	1412402	9.127

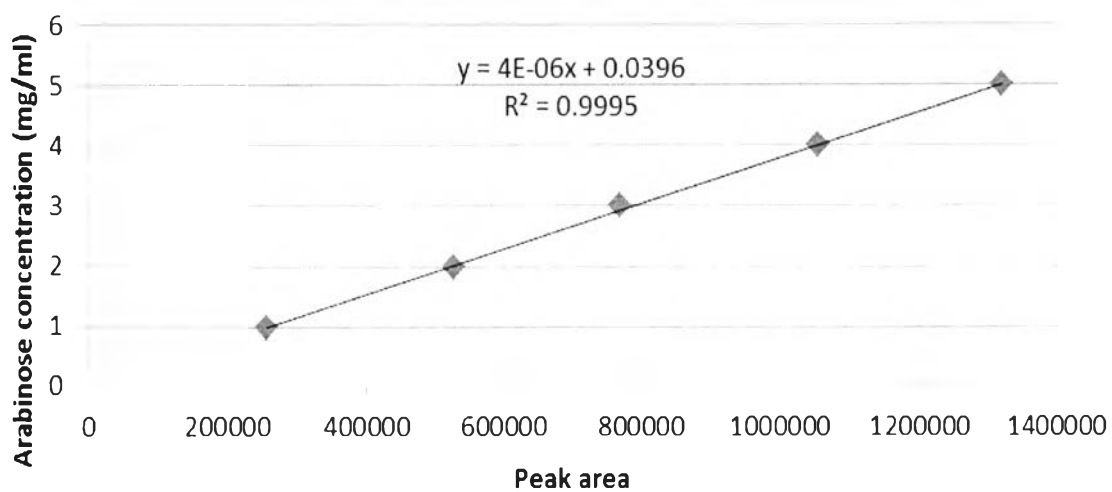
**Table A2** Peak and retention times of xylose standard

<b>Xylose Concentration (g/l)</b>	<b>Peak Area</b>	<b>Retention Time (min)</b>
1.0	255503	9.756
2.0	528182	9.753
3.0	794934	9.756
4.0	1091071	9.755
5.0	1361445	9.722

**Table A3** Peak and retention times of arabinose standard

Arabinose Concentration (g/l)	Peak Area	Retention Time (min)
1.0	256021	10.537
2.0	527612	10.524
3.0	769977	10.527
4.0	1054706	10.518
5.0	1318225	10.488

**Figure A1** Relationship between peak area and glucose concentration**Figure A2** Relationship between peak area and xylose concentration



**Figure A3** Relationship between peak area and arabinose concentration

Equation of standard glucose:  $y = (4 \times 10^{-6})x + 0.0421$

Equation of standard xylose:  $y = (4 \times 10^{-6})x + 0.0952$

Equation of standard arabinose:  $y = (4 \times 10^{-6})x + 0.0396$

$y =$  sugar concentration (g/l)

$x =$  peak area

**Appendix B: The amount of monomeric sugar, pH value, and % solid loss of Mission grass from the two-stage pretreatment process**

**Table B1** Monomeric sugar yields of Mission grass hydrolysate using 0.5 % (w/v) NaOH and 15:1 LSR at different temperatures for various times.

Pretreatment		Monomeric sugar yields (g/100 g biomass)							
Temperature (°C)	Time (min)	Glucose		Xylose		Arabinose		Total	
		Value	S.D.	Value	S.D.	Value	S.D.	Value	S.D.
40	5	2.5	0.6	0.5	0.1	0.3	0.0	3.2	0.7
	10	2.9	0.2	0.5	0.1	0.3	0.0	3.7	0.3
	15	2.2	0.3	0.4	0.0	0.3	0.0	2.9	0.3
	30	2.6	0.2	0.6	0.1	0.3	0.0	3.5	0.3
	60	3.4	0.2	0.8	0.1	0.6	0.1	4.8	0.4
60	5	1.7	0.2	0.9	0.1	0.2	0.0	2.8	0.3
	10	3.8	0.2	0.7	0.0	0.5	0.0	5.0	0.2
	15	1.8	0.1	0.9	0.0	0.2	0.0	2.9	0.2
	30	2.0	0.2	0.9	0.1	0.2	0.0	3.1	0.3
	60	2.2	0.2	0.9	0.1	0.2	0.0	3.3	0.3
80	5	2.6	0.1	0.9	0.0	0.2	0.0	3.8	0.2
	10	2.5	0.1	0.9	0.1	0.2	0.0	3.6	0.2
	15	2.5	0.1	0.9	0.0	0.2	0.0	3.6	0.2
	30	2.5	0.1	0.9	0.0	0.4	0.0	3.8	0.2
	60	2.3	0.1	0.8	0.1	0.3	0.1	3.4	0.1
100	5	2.5	0.2	0.8	0.1	0.3	0.1	3.6	0.3
	10	2.6	0.1	0.8	0.0	0.3	0.0	3.6	0.1
	15	2.4	0.3	0.8	0.1	0.3	0.0	3.4	0.4
	30	2.1	0.3	0.8	0.0	0.3	0.0	3.2	0.3
	60	1.8	0.1	0.8	0.0	0.3	0.0	3.0	0.1
120	5	3.7	0.3	1.2	0.1	1.0	0.1	5.9	0.5
	10	3.9	0.2	1.1	0.1	1.0	0.1	6.0	0.3
	15	3.4	0.3	1.0	0.1	0.9	0.1	5.3	0.5
	30	2.9	0.2	0.9	0.1	0.7	0.0	4.4	0.3
	60	3.5	0.3	0.6	0.1	0.8	0.1	5.0	0.4

Data are mean value  $\pm$  S.D. of three replicates

**Table B2** pH, and %solid loss of Mission grass using 0.5 % (w/v) NaOH and 15:1 LSR at different temperatures for various times.

Pretreatment		pH		% Solid loss	
Temperature (°C)	Time (min)	Value	S.D.	Value	S.D.
40	5	10.7	1.3	15.9	1.3
	10	12.6	0.1	15.3	1.3
	15	12.7	0.0	12.4	0.8
	30	12.2	0.1	17.0	1.2
	60	11.8	0.2	19.2	3.9
60	5	12.5	0.0	10.7	2.8
	10	12.1	0.2	17.3	0.5
	15	12.4	0.1	10.8	0.8
	30	12.4	0.1	16.2	0.3
	60	12.1	0.2	18.2	2.6
80	5	12.2	0.1	20.3	1.3
	10	12.1	0.3	18.8	1.1
	15	12.0	0.2	17.7	2.0
	30	11.3	0.2	20.5	2.4
	60	11.5	0.4	24.4	2.6
100	5	11.9	0.2	23.4	1.9
	10	11.2	0.1	24.5	1.3
	15	11.0	0.1	21.6	5.8
	30	10.7	0.1	28.8	2.1
	60	10.6	0.0	35.7	1.1
120	5	10.8	0.1	27.4	4.9
	10	10.7	0.1	30.9	2.8
	15	10.5	0.1	34.0	2.6
	30	10.4	0.1	31.0	4.2
	60	10.4	0.1	37.5	1.3

Data are mean value  $\pm$  S.D. of three replicates

**Table B3** Monomeric sugar yields of Mission grass hydrolysate at 120 °C for 10 min using 15:1 LSR under different NaOH concentrations.

NaOH concentration (% w/v)	Monomeric sugar yields (g/100 g biomass)							
	Glucose		Xylose		Arabinose		Total	
	Value	S.D.	Value	S.D.	Value	S.D.	Value	S.D.
0.1	1.2	0.0	1.0	0.0	0.2	0.0	2.4	0.1
0.25	1.3	0.2	1.0	0.1	0.3	0.0	2.7	0.3
0.5	3.9	0.2	1.1	0.1	1.0	0.1	6.0	0.3
1	3.3	0.3	1.3	0.1	0.6	0.0	5.2	0.5
2	3.2	0.6	1.3	0.1	0.6	0.1	5.1	0.7
3	4.2	0.1	1.5	0.0	0.9	0.0	6.6	0.1
4	3.9	0.2	1.5	0.1	0.9	0.0	6.3	0.3
5	3.7	0.2	1.5	0.0	0.9	0.0	6.1	0.2
6	3.9	0.2	1.6	0.1	0.9	0.0	6.4	0.3
7	3.9	0.2	1.5	0.0	0.9	0.0	6.2	0.2

Data are mean value  $\pm$  S.D. of three replicates

**Table B4** pH and % solid loss of Mission grass hydrolysate at 120 °C for 10 min using 15:1 LSR under different NaOH concentrations.

NaOH concentration (% w/v)	pH		% Solid loss	
	Value	S.D.	Value	S.D.
0.1	7.9	0.1	16.6	1.7
0.25	8.6	0.6	16.4	1.1
0.5	10.7	0.1	30.9	2.8
1	12.4	0.1	38.4	3.8
2	12.7	0.4	38.2	3.5
3	13.3	0.1	41.1	0.7
4	13.2	0.0	41.8	5.7
5	12.9	0.1	31.3	1.5
6	13.3	0.5	32.2	4.0
7	13.0	0.0	34.6	2.8

Data are mean value  $\pm$  S.D. of three replicates

**Table B5** Monomeric sugar yields of microwave/NaOH pretreated Mission grass using 0.5 % (w/v) H<sub>2</sub>SO<sub>4</sub> and 15:1 LSR at different temperatures for various times.

Pretreatment		Monomeric sugar yields (g/100 g biomass)							
Temperature (°C)	Time (min)	Glucose		Xylose		Arabinose		Total	
		Value	S.D.	Value	S.D.	Value	S.D.	Value	S.D.
80	5	0.6	0.1	0.2	0.0	0.1	0.0	0.8	0.1
	10	0.7	0.0	0.2	0.0	0.2	0.0	1.1	0.1
	15	0.7	0.0	0.2	0.0	0.8	0.0	1.7	0.0
	30	0.7	0.0	0.2	0.0	0.9	0.1	1.8	0.1
	60	0.9	0.0	0.3	0.0	1.6	0.1	2.8	0.1
100	5	0.8	0.0	0.3	0.1	1.3	0.0	2.4	0.0
	10	0.8	0.0	0.3	0.0	1.3	0.1	2.3	0.1
	15	0.8	0.1	0.3	0.1	1.4	0.1	2.5	0.2
	30	1.1	0.0	2.3	0.5	1.6	0.1	5.0	0.4
	60	1.3	0.2	3.5	0.7	1.7	0.0	6.6	0.9
140	5	1.0	0.0	2.1	0.7	1.8	0.2	4.9	0.9
	10	1.1	0.0	3.2	0.2	1.9	0.1	6.2	0.2
	15	1.3	0.1	4.5	0.4	1.9	0.2	7.7	0.4
	30	1.8	0.0	5.8	0.1	2.1	0.1	9.7	0.1
	60	2.8	0.4	7.2	0.4	1.5	0.0	11.5	0.8
160	5	3.5	0.6	7.4	0.5	1.4	0.0	12.3	1.1
	10	3.7	0.9	7.7	1.2	1.4	0.1	12.7	2.2
	15	4.1	0.6	7.7	0.7	1.4	0.1	13.2	1.3
	30	5.3	0.7	8.3	0.5	1.3	0.1	14.9	1.3
	60	7.7	0.6	7.5	0.2	1.1	0.0	16.2	0.3
180	5	5.2	0.2	10.8	0.1	1.7	0.0	17.7	0.3
	10	8.0	0.5	11.2	0.7	2.1	0.1	21.3	0.4
	15	10.8	1.8	8.0	2.0	2.0	0.5	21.3	0.3
	30	17.4	1.4	5.4	1.9	1.2	0.1	23.9	0.7
	60	20.0	2.8	3.2	0.1	0.9	0.0	24.1	2.9
200	5	27.2	0.5	4.5	0.3	2.1	0.6	33.7	0.4
	10	24.5	1.4	5.8	1.2	1.4	0.7	31.7	0.9
	15	26.4	2.7	5.0	2.7	1.0	0.4	31.9	0.3
	30	26.5	0.4	2.3	0.0	0.7	0.1	29.6	0.6
	60	22.2	1.7	1.3	0.1	0.5	0.1	24.0	1.9

Data are mean value  $\pm$  S.D. of three replicates

**Table B6** pH and % solid loss of Microwave/NaOH pretreated Mission grass using 0.5 % (w/v) H<sub>2</sub>SO<sub>4</sub> and 15:1 LSR at different temperatures for various times.

Pretreatment		pH		% Solid loss	
Temperature (°C)	Time (min)	Value	S.D.	Value	S.D.
80	5	1.7	0.1	7.7	2.0
	10	1.7	0.0	8.4	0.8
	15	1.7	0.0	10.5	0.4
	30	1.6	0.0	8.5	0.6
	60	1.6	0.0	9.2	1.0
100	5	1.8	0.0	11.9	0.9
	10	1.8	0.0	10.9	1.1
	15	1.8	0.0	13.1	0.6
	30	1.7	0.1	13.3	0.8
	60	1.7	0.0	14.6	0.5
140	5	1.7	0.0	22.4	2.2
	10	1.6	0.0	19.8	1.0
	15	1.6	0.0	19.3	0.4
	30	1.6	0.0	20.3	0.2
	60	1.8	0.0	23.5	0.1
160	5	1.7	0.0	19.3	0.7
	10	1.7	0.0	22.0	2.4
	15	1.7	0.0	19.1	0.0
	30	1.7	0.0	23.2	2.5
	60	1.7	0.0	27.6	2.2
180	5	1.9	0.0	29.2	0.5
	10	1.6	0.0	33.9	0.3
	15	1.7	0.0	32.6	2.3
	30	1.6	0.0	41.5	4.2
	60	1.6	0.0	48.9	2.5
200	5	1.5	0.0	64.1	3.1
	10	1.6	0.1	49.7	3.5



	15	1.8	0.0	65.8	18.6
	30	1.8	0.0	70.0	1.6
	60	1.8	0.0	76.0	0.0

Data are mean value  $\pm$  S.D. of three replicates

**Table B7** Monomeric sugar yields of microwave/NaOH pretreated Mission grass at 200 °C for 5 min using 15:1 LSR under different H<sub>2</sub>SO<sub>4</sub> concentrations.

H <sub>2</sub> SO <sub>4</sub> concentration (% w/v)	Monomeric sugar yields (g/100 g biomass)							
	Glucose		Xylose		Arabinose		Total	
	Value	S.D.	Value	S.D.	Value	S.D.	Value	S.D.
0.5	27.2	0.5	4.5	0.3	2.1	0.6	33.7	0.4
1	31.1	0.8	2.2	0.4	1.0	0.2	34.3	1.3
2	22.1	3.3	2.7	1.4	0.7	0.2	25.5	4.9
3	4.1	0.4	1.3	0.1	0.6	0.0	6.0	0.5

Data are mean value  $\pm$  S.D. of three replicates

**Table B8** pH and % solid loss of microwave/NaOH pretreated Mission grass at 200 °C for 5 min using 15:1 LSR under different H<sub>2</sub>SO<sub>4</sub> concentrations.

H <sub>2</sub> SO <sub>4</sub> concentration (% w/v)	pH		% Solid loss	
	Value	S.D.	Value	S.D.
0.5	1.5	0.0	64.1	3.1
1	1.3	0.2	72.0	0.5
2	1.1	0.0	66.8	8.6
3	1.0	0.0	86.8	0.7

Data are mean value  $\pm$  S.D. of three replicates

**Appendix C The amount of monomeric sugar, pH value, and % solid loss of Kans grass from two stage pretreatment process**

**Table C1** Monomeric sugar yields of Kans grass hydrolysate using 0.5 % (w/v) NaOH and 15:1 LSR at different temperatures for various times

Pretreatment		Monomeric sugar yields (g/100 g biomass)							
Temperature (°C)	Time (min)	Glucose		Xylose		Arabinose		Total	
		Value	S.D.	Value	S.D.	Value	S.D.	Value	S.D.
40	5	0.4	0.1	1.0	0.1	0.5	0.1	1.9	0.2
	10	0.8	0.0	1.0	0.0	0.6	0.0	2.4	0.0
	15	0.5	0.1	0.9	0.1	0.5	0.0	1.9	0.2
	30	0.7	0.0	0.9	0.1	0.5	0.1	2.1	0.2
	60	1.1	0.0	0.9	0.1	0.5	0.0	2.5	0.1
60	5	1.6	0.1	1.7	0.0	0.3	0.0	3.6	0.1
	10	1.4	0.1	1.0	0.0	0.7	0.0	3.0	0.2
	15	1.6	0.0	1.6	0.0	0.2	0.0	3.4	0.0
	30	1.8	0.1	1.6	0.0	0.2	0.0	3.6	0.0
	60	1.9	0.1	1.6	0.0	0.2	0.0	3.7	0.0
80	5	2.4	0.1	1.9	0.1	0.5	0.0	4.8	0.2
	10	2.2	0.0	1.7	0.0	0.5	0.0	4.4	0.1
	15	2.1	0.1	1.5	0.0	0.3	0.0	4.0	0.2
	30	2.4	0.1	1.6	0.1	0.5	0.1	4.5	0.3
	60	2.4	0.0	1.6	0.0	0.6	0.0	4.6	0.1
100	5	2.3	0.1	1.6	0.0	0.5	0.0	4.4	0.1
	10	2.4	0.1	1.6	0.0	0.6	0.0	4.6	0.2
	15	2.3	0.1	1.6	0.1	0.6	0.0	4.5	0.2
	30	1.6	0.1	1.6	0.1	0.6	0.0	3.9	0.2
	60	1.3	0.1	1.4	0.0	0.4	0.1	3.1	0.1
120	5	1.9	0.1	1.4	0.0	0.5	0.1	3.8	0.0
	10	1.7	0.2	1.5	0.0	0.3	0.2	3.5	0.2
	15	1.3	0.3	1.4	0.0	0.5	0.1	3.2	0.2
	30	1.0	0.1	1.2	0.1	0.5	0.0	2.7	0.2
	60	0.5	0.1	0.9	0.0	0.8	0.0	2.2	0.1

Data are mean value  $\pm$  S.D. of three replicates

**Table C2** pH, and %solid loss of Kans grass using 0.5 % (w/v) NaOH and 15:1 LSR at different temperatures for various times.

Pretreatment		pH		% Solid loss	
Temperature (°C)	Time (min)	Value	S.D.	Value	S.D.
40	5	12.6	0.0	15.5	0.2
	10	12.6	0.0	18.6	0.4
	15	12.6	0.1	15.9	0.7
	30	11.7	1.4	18.7	1.5
	60	12.2	0.1	23.8	0.5
60	5	12.5	0.1	13.3	0.5
	10	12.0	0.3	21.1	0.5
	15	12.4	0.1	15.8	0.2
	30	12.2	0.3	18.0	3.2
	60	12.1	0.1	23.0	0.9
80	5	11.8	0.3	23.3	1.5
	10	12.0	0.6	22.8	0.8
	15	11.8	0.1	23.2	1.7
	30	11.1	0.1	26.0	0.3
	60	11.1	0.1	28.6	2.1
100	5	11.6	0.3	26.0	0.5
	10	11.1	0.1	29.3	2.8
	15	10.9	0.1	28.7	0.8
	30	10.5	0.1	31.5	1.9
	60	10.4	0.1	34.8	0.7
120	5	10.8	0.1	28.4	1.2
	10	10.5	0.1	32.9	1.0
	15	10.4	0.1	34.5	0.6
	30	10.2	0.1	34.8	2.6
	60	9.9	0.1	40.5	0.9

Data are mean value  $\pm$  S.D. of three replicates

**Table C3** Monomeric sugar yields of Kans grass hydrolysate at 80 °C for 5 min using 15:1 LSR under different NaOH concentrations.

NaOH concentration (% w/v)	Monomeric sugar yields (g/100 g biomass)							
	Glucose		Xylose		Arabinose		Total	
	Value	S.D.	Value	S.D.	Value	S.D.	Value	S.D.
0.1	1.2	0.1	1.8	0.2	0.4	0.0	3.5	0.2
0.25	1.4	0.0	1.7	0.1	0.3	0.0	3.5	0.1
0.5	2.4	0.1	1.9	0.1	0.5	0.0	4.8	0.2
1	2.7	0.1	2.1	0.1	0.6	0.0	5.4	0.2
2	2.7	0.1	2.1	0.1	0.6	0.0	5.4	0.2
3	3.5	0.5	2.2	0.2	0.7	0.1	6.4	0.8
4	3.6	0.2	2.2	0.0	0.7	0.0	6.5	0.2
5	3.6	0.2	2.5	0.1	0.7	0.0	6.8	0.3
6	3.5	0.1	2.4	0.1	0.7	0.0	6.6	0.3
7	3.5	0.3	2.4	0.2	0.7	0.0	6.6	0.5

Data are mean value  $\pm$  S.D. of three replicates

**Table C4** pH and % solid loss of Kans grass hydrolysate at 80 °C for 5 min using 15:1 LSR under different NaOH concentrations.

NaOH concentration (% w/v)	pH		% Solid loss	
	Value	S.D.	Value	S.D.
0.1	8.0	0.2	17.9	0.8
0.25	9.2	0.7	18.5	1.0
0.5	11.8	0.6	23.3	1.5
1	12.5	0.2	26.6	3.4
2	13.1	0.0	32.4	3.4
3	13.2	0.0	26.5	4.2
4	13.1	0.2	28.0	3.9
5	13.1	0.0	34.5	3.1
6	13.1	0.0	25.9	7.5
7	13.1	0.0	25.8	12.1

Data are mean value  $\pm$  S.D. of three replicates

**Table C5** Monomeric sugar yields of microwave/NaOH pretreated Kans grass using 0.5 % (w/v) H<sub>2</sub>SO<sub>4</sub> and 15:1 LSR at different temperatures for various times.

Pretreatment		Monomeric sugar yields (g/100 g biomass)							
Temperature (°C)	Time (min)	Glucose		Xylose		Arabinose		Total	
		Value	S.D.	Value	S.D.	Value	S.D.	Value	S.D.
80	5	0.5	0.0	0.2	0.0	0.2	0.0	0.8	0.0
	10	0.5	0.0	0.2	0.0	0.3	0.0	0.9	0.0
	15	0.5	0.0	0.2	0.0	1.0	0.1	1.7	0.1
	30	0.6	0.0	0.2	0.0	0.9	0.2	1.6	0.2
	60	0.7	0.0	0.3	0.0	1.6	0.1	2.5	0.1
100	5	0.5	0.0	0.4	0.1	1.5	0.0	2.4	0.1
	10	0.5	0.0	0.4	0.1	1.2	0.3	2.1	0.3
	15	0.6	0.0	0.5	0.0	1.5	0.1	2.5	0.1
	30	1.7	0.0	5.2	0.1	1.7	0.1	8.6	0.1
	60	1.1	0.3	3.9	0.9	1.6	0.0	6.6	1.0
140	5	0.7	0.1	2.7	0.8	2.0	0.1	5.4	1.0
	10	0.5	0.0	3.3	0.5	1.8	0.0	5.6	0.5
	15	0.6	0.2	3.3	1.2	1.9	0.2	5.9	1.4
	30	2.1	0.4	6.7	0.8	2.3	0.1	11.1	1.3
	60	2.4	0.5	6.2	0.8	1.7	0.1	10.3	1.3
160	5	1.3	0.3	5.6	0.9	2.0	0.2	8.9	1.4
	10	2.7	0.4	6.9	0.2	1.8	0.1	11.4	0.5
	15	2.7	0.6	7.6	1.2	1.9	0.1	12.2	1.9
	30	5.7	0.5	8.7	0.1	1.7	0.1	16.0	0.6
	60	7.2	1.6	7.8	0.6	1.5	0.1	16.5	0.9
180	5	5.2	0.9	10.4	0.4	2.3	0.0	17.8	1.3
	10	12.8	1.4	8.6	0.3	1.9	0.1	23.3	1.5
	15	12.0	2.6	8.9	1.0	1.9	0.1	22.8	1.9
	30	14.5	2.3	6.9	1.2	2.5	0.0	23.9	1.1
	60	9.8	1.6	10.1	1.0	2.2	0.1	22.1	2.7
200	5	12.9	3.9	8.8	1.4	2.2	0.2	23.9	2.3
	10	26.3	2.9	6.7	0.9	0.8	0.0	33.8	3.9
	15	22.5	0.9	4.8	2.3	1.3	0.6	28.5	0.9
	30	22.3	2.1	3.5	0.7	0.9	0.2	26.7	1.3
	60	1.4	0.5	0.6	0.3	0.3	0.0	2.4	0.8

Data are mean value  $\pm$  S.D. of three replicates

**Table C6** pH and % solid loss of microwave/NaOH pretreated Kans grass using 0.5 % (w/v) H<sub>2</sub>SO<sub>4</sub> and 15:1 LSR at different temperatures for various times.

Pretreatment		pH		% Solid loss	
Temperature (°C)	Time (min)	Value	S.D.	Value	S.D.
80	5	1.6	0.0	10.4	1.7
	10	1.6	0.0	10.3	1.1
	15	1.6	0.0	10.9	0.7
	30	1.6	0.0	9.7	1.3
	60	1.6	0.0	9.9	0.5
100	5	1.8	0.0	11.9	0.2
	10	1.8	0.0	11.3	1.0
	15	1.7	0.0	11.6	0.9
	30	1.7	0.0	17.4	1.0
	60	1.6	0.0	14.5	0.9
140	5	1.7	0.0	9.9	2.8
	10	1.5	0.0	18.7	0.5
	15	1.6	0.0	15.3	1.2
	30	1.6	0.0	25.4	1.3
	60	1.7	0.0	22.3	0.6
160	5	1.6	0.0	21.7	1.5
	10	1.7	0.0	20.0	2.0
	15	1.6	0.0	19.7	0.7
	30	1.7	0.0	25.5	0.2
	60	1.7	0.0	27.0	2.2
180	5	1.8	0.0	21.6	1.7
	10	1.7	0.1	32.3	1.8
	15	1.7	0.1	30.1	2.8
	30	1.7	0.0	36.2	5.1
	60	1.8	0.0	29.6	5.0
200	5	1.7	0.0	35.8	3.0

	10	1.8	0.0	77.7	3.8
	15	1.8	0.0	60.4	3.1
	30	1.5	0.0	62.9	13.7
	60	1.7	0.0	71.3	1.4

Data are mean value  $\pm$  S.D. of three replicates

**Table C7** Monomeric sugar yields of microwave/NaOH pretreated Kans grass at 200 °C for 10 min using 15:1 LSR under different H<sub>2</sub>SO<sub>4</sub> concentrations.

H <sub>2</sub> SO <sub>4</sub> concentration (% w/v)	Monomeric sugar yields (g/100 g biomass)							
	Glucose		Xylose		Arabinose		Total	
	Value	S.D.	Value	S.D.	Value	S.D.	Value	S.D.
0.5	26.3	2.9	6.7	0.9	0.8	0.0	33.8	3.9
1	21.1	4.0	1.6	0.1	0.7	0.0	23.4	4.1
2	20.6	1.9	2.8	1.9	1.0	0.6	24.4	3.2
3	4.8	3.9	1.0	0.1	0.7	0.0	6.5	3.9

Data are mean value  $\pm$  S.D. of three replicates

**Table C8** pH and % solid loss of microwave/NaOH pretreated Kans grass at 200 °C for 10 min using 15:1 LSR under different H<sub>2</sub>SO<sub>4</sub> concentrations.

H <sub>2</sub> SO <sub>4</sub> concentration (% w/v)	pH		% Solid loss	
	Value	S.D.	Value	S.D.
0.5	1.8	0.0	77.7	3.8
1	1.1	0.1	83.9	0.7
2	1.1	0.1	82.6	0.7
3	1.0	0.0	80.2	0.1

Data are mean value  $\pm$  S.D. of three replicates

**Appendix D** The amount of monomeric sugar, pH value, and % solid loss of Giant reed from two stage pretreatment process

**Table D1** Monomeric sugar yields of Giant reed hydrolysate using 0.5 % (w/v) NaOH and 15:1 LSR at different temperatures for various times.

Pretreatment		Monomeric sugar yields (g/100 g biomass)							
Temperature (°C)	Time (min)	Glucose		Xylose		Arabinose		Total	
		Value	S.D.	Value	S.D.	Value	S.D.	Value	S.D.
40	5	0.5	0.1	0.5	0.0	0.3	0.0	1.3	0.2
	10	0.9	0.1	0.6	0.0	0.3	0.0	1.8	0.1
	15	0.6	0.0	0.5	0.0	0.3	0.0	1.4	0.0
	30	0.6	0.0	0.5	0.0	0.3	0.0	1.3	0.0
	60	1.0	0.0	0.6	0.0	0.3	0.0	1.9	0.0
60	5	1.1	0.1	0.9	0.0	0.2	0.0	2.3	0.1
	10	1.5	0.1	0.8	0.0	0.5	0.0	2.8	0.2
	15	1.2	0.1	0.9	0.0	0.2	0.0	2.4	0.1
	30	1.5	0.1	0.9	0.0	0.3	0.0	2.6	0.1
	60	1.5	0.2	0.9	0.1	0.4	0.0	2.8	0.3
80	5	1.9	0.0	0.9	0.1	0.3	0.0	3.1	0.0
	10	1.8	0.1	0.8	0.0	0.3	0.0	2.9	0.2
	15	1.9	0.0	0.8	0.1	0.3	0.0	3.0	0.1
	30	1.9	0.5	0.6	0.0	0.3	0.0	2.9	0.5
	60	1.8	0.0	0.7	0.0	0.3	0.0	2.8	0.0
100	5	2.1	0.2	0.6	0.0	0.3	0.2	3.1	0.2
	10	2.3	0.1	0.6	0.0	0.3	0.1	3.3	0.1
	15	2.3	0.1	0.7	0.0	0.3	0.1	3.3	0.1
	30	1.6	0.4	0.7	0.0	0.3	0.0	2.6	0.4
	60	1.3	0.1	0.7	0.1	0.4	0.1	2.4	0.1
120	5	2.1	0.1	1.5	0.0	1.0	0.0	4.5	0.1
	10	2.0	0.0	1.4	0.0	0.9	0.0	4.4	0.1
	15	1.8	0.2	1.3	0.1	0.9	0.1	4.0	0.4
	30	1.1	0.3	0.9	0.2	0.7	0.1	2.7	0.7
	60	0.7	0.4	0.5	0.1	0.7	0.1	1.9	0.6

Data are mean value  $\pm$  S.D. of three replicates



**Table D2** pH, and %solid loss of Giant reed using 0.5 % (w/v) NaOH and 15:1 LSR at different temperatures for various times.

Pretreatment		pH		% Solid loss	
Temperature (°C)	Time (min)	Value	S.D.	Value	S.D.
40	5	12.7	0.1	13.5	1.3
	10	12.7	0.1	13.7	1.1
	15	12.8	0.0	11.0	0.3
	30	12.7	0.1	14.0	1.4
	60	12.4	0.0	18.3	0.5
60	5	12.7	0.1	10.2	4.9
	10	12.6	0.0	15.8	1.3
	15	12.6	0.0	12.1	1.3
	30	12.5	0.1	15.4	0.1
	60	12.3	0.1	16.1	1.3
80	5	12.6	0.1	18.3	0.9
	10	12.6	0.2	16.8	0.8
	15	12.5	0.5	18.4	2.1
	30	12.1	0.7	21.3	1.6
	60	12.3	0.1	20.0	1.1
100	5	11.9	0.4	20.7	2.3
	10	11.3	0.3	24.0	0.3
	15	11.0	0.2	23.5	1.0
	30	10.6	0.3	27.1	1.1
	60	10.5	0.1	30.7	1.7
120	5	10.9	0.2	25.4	0.9
	10	10.8	0.0	27.6	1.8
	15	10.6	0.1	27.2	1.7
	30	10.3	0.2	28.6	1.4
	60	9.9	0.6	32.5	2.2

Data are mean value  $\pm$  S.D. of three replicates

**Table D3** Monomeric sugar yields of Giant reed hydrolysate at 120 °C for 5 min using 15:1 LSR under different NaOH concentrations.

NaOH concentration (% w/v)	Monomeric sugar yields (g/100 g biomass)							
	Glucose		Xylose		Arabinose		Total	
	Value	S.D.	Value	S.D.	Value	S.D.	Value	S.D.
0.1	1.0	0.0	1.1	0.0	0.2	0.0	2.3	0.0
0.25	0.8	0.1	0.9	0.1	0.4	0.0	2.0	0.2
0.5	2.1	0.1	1.5	0.0	1.0	0.0	4.5	0.1
1	3.4	0.6	1.2	0.2	0.5	0.1	5.1	0.9
2	4.0	0.2	1.1	0.1	0.6	0.0	5.8	0.3
3	4.5	0.1	1.4	0.0	0.8	0.0	6.7	0.2
4	4.4	0.3	1.4	0.0	0.8	0.0	6.6	0.3
5	4.5	0.1	1.5	0.0	0.9	0.0	6.8	0.2
6	4.4	0.2	1.4	0.1	0.8	0.0	6.6	0.2
7	4.2	0.2	1.4	0.0	0.8	0.0	6.4	0.2

Data are mean value  $\pm$  S.D. of three replicates

**Table D4** pH and % solid loss of Giant reed hydrolysate at 120 °C for 5 min using 15:1 LSR under different NaOH concentrations.

NaOH concentration (% w/v)	pH		% Solid loss	
	Value	S.D.	Value	S.D.
0.1	7.7	0.0	15.3	0.4
0.25	8.5	0.1	17.3	1.2
0.5	10.9	0.2	25.4	0.9
1	11.3	1.3	28.6	3.3
2	13.0	0.1	30.2	2.0
3	13.1	0.1	34.1	2.5
4	13.2	0.0	32.9	3.1
5	13.2	0.0	28.4	6.7
6	13.1	0.0	20.4	12.5
7	13.1	0.0	31.3	0.0

Data are mean value  $\pm$  S.D. of three replicates

**Table D5** Monomeric sugar yields of microwave/NaOH pretreated Giant reed using 0.5 % (w/v) H<sub>2</sub>SO<sub>4</sub> and 15:1 LSR at different temperatures for various times.

Pretreatment		Monomeric sugar yields (g/100 g biomass)							
Temperature (°C)	Time (min)	Glucose		Xylose		Arabinose		Total	
		Value	S.D.	Value	S.D.	Value	S.D.	Value	S.D.
80	5	0.1	0.0	0.2	0.0	0.2	0.0	0.5	0.0
	10	0.2	0.0	0.2	0.0	0.2	0.0	0.6	0.0
	15	0.2	0.0	0.2	0.0	1.0	0.1	1.4	0.1
	30	0.2	0.0	0.2	0.0	1.0	0.2	1.3	0.3
	60	0.3	0.0	0.2	0.0	1.3	0.1	1.8	0.1
100	5	0.2	0.0	0.3	0.1	1.1	0.0	1.6	0.1
	10	0.2	0.0	0.4	0.1	1.1	0.0	1.8	0.2
	15	0.3	0.0	0.5	0.2	1.2	0.1	1.9	0.3
	30	0.8	0.1	3.4	0.3	1.3	0.0	5.5	0.4
	60	1.1	0.2	3.9	0.7	1.3	0.0	6.3	1.0
140	5	0.4	0.1	2.1	0.3	1.5	0.0	4.0	0.3
	10	0.5	0.2	2.3	1.7	1.5	0.1	4.3	2.0
	15	1.2	0.4	4.8	1.1	1.4	0.1	7.4	1.6
	30	3.5	0.7	7.8	0.5	1.4	0.1	12.7	1.2
	60	2.8	1.2	7.2	0.8	1.4	0.0	11.5	1.9
160	5	3.2	1.2	7.8	0.9	1.5	0.0	12.4	2.1
	10	2.4	0.4	7.3	0.3	1.5	0.1	11.2	0.6
	15	3.0	0.5	6.8	0.4	1.3	0.0	11.1	0.9
	30	5.0	1.2	7.6	0.1	1.4	0.0	13.9	1.3
	60	6.0	0.3	7.4	0.1	1.3	0.0	14.7	0.2
180	5	6.6	0.0	8.8	0.4	1.5	0.1	16.9	0.4
	10	7.0	0.7	7.6	0.3	1.2	0.1	15.7	0.8
	15	14.7	0.5	6.7	0.0	1.4	0.0	22.7	0.5
	30	26.4	2.5	4.3	0.7	1.2	0.1	31.9	1.7
	60	20.9	0.1	4.6	1.3	1.0	0.2	26.6	1.4
200	5	9.7	0.3	8.0	0.1	1.5	0.0	19.2	0.2
	10	26.7	1.9	2.7	1.4	0.7	0.1	30.2	3.2

	15	21.8	3.8	2.9	1.3	0.7	0.1	25.4	2.8
	30	22.5	0.3	2.7	1.4	1.8	1.5	27.0	0.4
	60	1.5	0.8	0.4	0.0	0.4	0.0	2.2	0.8

Data are mean value  $\pm$  S.D. of three replicates

**Table D6** pH and % solid loss of Microwave/NaOH pretreated Giant reed with using 0.5 % (w/v) H<sub>2</sub>SO<sub>4</sub> and 15:1 LSR at different temperatures for various times.

Pretreatment		pH		% Solid loss	
Temperature (°C)	Time (min)	Value	S.D.	Value	S.D.
80	5	1.6	0.0	8.3	1.4
	10	1.7	0.1	9.7	1.1
	15	1.6	0.0	9.3	1.5
	30	1.5	0.0	8.4	0.3
	60	1.5	0.0	7.1	0.8
100	5	1.8	0.0	15.3	0.3
	10	1.7	0.0	14.7	1.8
	15	1.6	0.0	15.9	1.1
	30	1.6	0.0	23.3	3.2
	60	1.6	0.0	25.2	0.2
140	5	1.6	0.0	16.3	1.1
	10	1.6	0.0	16.8	0.3
	15	1.5	0.0	23.8	2.1
	30	1.5	0.0	29.5	2.4
	60	1.6	0.0	27.9	3.3
160	5	1.6	0.0	29.1	1.7
	10	1.6	0.0	25.1	3.5
	15	1.6	0.0	23.0	5.4
	30	1.6	0.0	27.0	2.2
	60	1.6	0.0	28.5	1.0
180	5	1.8	0.0	34.6	1.0
	10	1.7	0.0	29.8	1.1
	15	1.5	0.0	40.6	1.8

	30	1.5	0.0	51.8	2.7
	60	1.4	0.0	44.1	3.9
200	5	1.7	0.0	55.3	4.5
	10	1.7	0.0	67.5	10.3
	15	1.7	0.1	67.6	14.4
	30	1.5	0.0	65.0	14.6
	60	1.7	0.0	72.5	1.1

Data are mean value  $\pm$  S.D. of three replicates

**Table D7** Monomeric sugar yields of microwave/NaOH pretreated Giant reed at 180 °C for 30 min using 15:1 LSR under different H<sub>2</sub>SO<sub>4</sub> concentrations.

H <sub>2</sub> SO <sub>4</sub> concentration (% w/v)	Monomeric sugar yields (g/100 g biomass)							
	Glucose		Xylose		Arabinose		Total	
	Value	S.D.	Value	S.D.	Value	S.D.	Value	S.D.
0.5	26.4	2.5	4.3	0.7	1.2	0.1	31.9	1.7
1	23.0	4.4	2.1	0.4	1.1	0.8	26.2	4.0
2	22.8	5.9	1.7	0.5	1.1	0.9	25.5	6.9
3	13.4	6.0	1.1	0.2	0.6	0.0	15.1	6.1

Data are mean value  $\pm$  S.D. of three replicates

**Table D8** pH and % solid loss of Microwave/NaOH pretreated Giant reed at 180 °C for 30 min using 15:1 LSR under different H<sub>2</sub>SO<sub>4</sub> concentrations.

H <sub>2</sub> SO <sub>4</sub> concentration (% w/v)	pH		% Solid loss	
	Value	S.D.	Value	S.D.
0.5	1.8	0.0	51.8	2.7
1	1.1	0.1	73.3	5.6
2	1.1	0.1	69.9	8.4
3	1.0	0.0	76.7	1.8

Data are mean value  $\pm$  S.D. of three replicates

## CURRICULUM VITAE

**Name:** Mr. Patomwat Tatijarearn

**Date of Birth:** August 16, 1989

**Nationality:** Thai

**University Education:**

2007–2010 Bachelor Degree of Chemistry in distinction programme, Faculty of Science, Mahidol University, Bangkok, Thailand

**Proceedings:**

1. Tatijarearn, P.; Prasertwasu, S.; Komolwanich., T.; Luengnaruemitchai, A.; Chaisuwan, T.; Wongkasemjit, S.; (2012, November 29-30) Evaluation of monomeric sugar yield from various grasses grown in Thailand as biofuel feedstocks by two stage microwave/chemical pretreatment process. Proceedings of the 24<sup>th</sup> Annual Meeting of Thai Society for Biotechnology and International Conference (TSB 2012), Ubon Ratchathani, Thailand.
2. Tatijarearn, P.; Prasertwasu, S.; Komolwanich., T.; Luengnaruemitchai, A.; Chaisuwan, T.; Wongkasemjit, S.; (2013, April 23) The potential of Thai grasses (Mission grass, Kans grass, and Giant reed) as a biofuel feedstock by two stage microwave/chemical pretreatment process. Proceedings of 19<sup>th</sup> PPC Symposium on Petroleum, Petrochemicals, and Polymers, Bangkok, Thailand.

**Presentations:**

1. Tatijarearn, P.; Prasertwasu, S.; Komolwanich., T.; Luengnaruemitchai, A.; Chaisuwan, T.; Wongkasemjit, S.; (2012, November 29-30) Evaluation of monomeric sugar yield from various grasses grown in Thailand as biofuel feedstocks by two stage microwave/chemical pretreatment process. Oral presented at the 24<sup>th</sup> Annual Meeting of Thai Society for Biotechnology and International Conference (TSB 2012), Ubon Ratchathani, Thailand.
2. Tatijarearn, P.; Prasertwasu, S.; Komolwanich., T.; Luengnaruemitchai, A.; Chaisuwan, T.; Wongkasemjit, S.; (2013, April 23) The potential of Thai grasses (Mission grass, Kans grass, and Giant reed) as a biofuel feedstock by two stage

microwave/chemical pretreatment process. Poster presented at 19<sup>th</sup> PPC Symposium on Petroleum, Petrochemicals, and Polymers, Bangkok, Thailand.

3. Tatijarern, P.; Prasertwasu, S.; Komolwanich., T.; Luengnaruemitchai, A.; Chaisuwan, T.; Wongkasemjit, S.; (2013, April 21-25) Monomeric sugar releasing from Giant reed (*Arundo Donax L.*) by two-stage microwave-assisted sodium hydroxide and sulfuric acid treatment for bioethanol production. Poster presented at the 9th European Congress of Chemical Engineering / 2nd European Congress of Applied Biotechnology, The Hague, Netherlands.