

## REFERENCES

- Alani, F. and Smith, J.E. (1988) Effect of chemical pretreatment on the fermentation and ultimate digestibility of bagasse by *Phanerochaete chrysosporium*. Journal of the Science of Food and Agriculture , 42, 19-28.
- Amores, I., Ballesteros, I., Manzanares, P., Sáez, F., Michelena, G., and Ballesteros, M. (2013) Ethanol production from sugarcane bagasse pretreated by steam explosion. Electronic Journal of Energy & Environment , 1, 25-36.
- Aparicio, M.P.G, Ballesteros, I., González, A., Oliva, J.M., Ballesteros, M., and Negro, M.J. (2006) Effect of inhibitors released during steam-explosion pretreatment of barley straw on enzymatic hydrolysis. Applied Biochemistry and Biotechnology. 129(1-3), 278-288.
- Azzam, A.M. (1989) Pretreatment of cane bagasse with alkaline hydrogen peroxide for enzymatic hydrolysis of cellulose and ethanol fermentation. Journal of Environmental Science and Health. 24(4), 421-433.
- Bahkali, A.H. (1996) Influence of various carbohydrates on xylanase production by *V. tricorpus*. Bioresource Technology, 33, 265-268.
- Ballesteros, I., Negro, M.José, Oliva, J.M., Cabañas, A., Manzanares, P., and Ballesteros, M. (2006) Ethanol production from steam-explosion pretreated wheat straw. Applied Biochemistry and Biotechnology, 129-132, 496-508.
- Běguin, P. and Aubert, J., P. (1994) The biological degradation of cellulose. FEMS Microbiology Reviews. 13, 25-58.
- Blasi, C.D., Signorelli, G., Di Russo, C., and Rea, G. (1999) Product distribution from pyrolysis of wood and agricultural residues. Industrial and Engineering Chemistry Research. 38(6), 2216-2224.
- Brennan, A.H., Hoagland, W., and Schell, D.J. (1986) High temperature acid hydrolysis of biomass using an engineering-scale plug flow reactor: result of low solids testing. Biotechnology and Bioengineering Symposium. 17, 53-70.
- Breznak, J.A. and Brune, A. (1994) Role of microorganisms in the digestion of lignocellulose by termite. Annual Review of Entomology, 39, 53-487.

- Cahela, D.R., Lee, Y.Y., and Chambers, R.P. (1983) Modeling of percolation process in hemicellulose hydrolysis. Biotechnology and Bioengineering, 25, 3-17.
- Cardona, C.A. and Sánchez, Ó.J. (2007) Fuel ethanol production: Process design trends and integration opportunities. Bioresource Technology, 98(12), 2415-2457.
- Cardona, C.A., Quintero, J.A., and Paz, I.C. (2009) Production of bioethanol from sugarcane bagasse: Status and perspectives. Bioresource Technology, 101(13), 4754-66.
- Carpita, N., Tierney, M., and Campbell, M. (2001) Molecular biology of the plant cell wall: searching for the genes that define structure, architecture and dynamics. Plant Molecular Biology, 47, 1-5.
- Carvalho, R.N.L (2009) Dilute acid and enzymatic hydrolysis of sugarcane bagasse for biogas production. Lunds University, 1-91.
- CCRC (Complex Carbohydrate Research Center). Plant Cell Walls. The University of Georgia. Last updated August 2007. Retrieved September 2009 from <http://www.ccruc.uga.edu/~mao/intro/outline.htm>
- Chang, V. and Holtzapfle, M. (2000) Fundamental factors affecting biomass enzymatic reactivity. Applied Biochemistry and Biotechnology, 84-86, 5-37.
- Chen, M., Xia, L., and Xue, P. (2007) Enzymatic hydrolysis of corncob and ethanol production from cellulosic hydrolysate. International Biodeterioration & Biodegradation, 59, 85-89.
- Chen, H. and Qui, W. (2010) Key technologies for bioethanol production from lignocellulose. Biotechnology Advances, 28, 556-562.
- Chornet, E. and R.P. Overend. (1988) Phenomenological kinetics and reaction engineering aspects of steam/aqueous treatments. Proceedings of the International Workshop on Steam Explosion Techniques: Fundamentals and Industrial Applications, 21-58.
- Converse, A.O., Kwartneg, I.K., Grethlein, H.E., and Ooshima, H. (1989) Kinetics of thermochemical pretreatment of lignocellulosic materials. Applied Biochemistry and Biotechnology, 20/21, 63-78.

- Crofcheck, C.L. and Montross, M.D. (2004) Effect of stover fraction on glucose production using enzymatic hydrolysis. Transactions of the American Society of Agricultural Engineers, 47, 841-844.
- Demers, A., Doane, R., Guzman, S., and Pagano, R. (2009) Enzymatic hydrolysis of cellulosic biomass for the production of second generation of biofuels, Worcester Polytechnic Institute, Massachusetts, United States.
- Dimian, A.C. and Bildea, C.S. (2008) Chemical Process Design: Computer-Aided Case Studies. Wiley-VCH.
- Doran, J.B., Aldrich, H.C., and Ingram, L.O. (1994) Saccharification and fermentation of sugarcane bagasse. Biotechnology and Bioengineering, 44, 240-247.
- Duff, S.J.B. and Murray, W.D. (1996) Bioconversion of forest products industry waste cellulose to fuel ethanol: a review. Bioresource Technology, 55, 1-33.
- Hourarekullart, W. (2011) Conversion of corncob to sugars by microbial hydrolysis. M.S. Thesis, The Petroleum and Petrochemical College, Chulalongkorn University.
- Esteghlalian, A., Hashimoto, A.G., Fenske, J.J., and Penner, M.H. (1997) Modeling and optimization of the dilute-acid pretreatment of corn stover, poplar and switchgrass. Bioresource Technology, 59, 129-136.
- Florabela, C., Duarte, L.C., and Girio, F.M. (2008) Hemicellulose biorefineries: a review on biomass pretreatments. Journal of Scientific and Industrial Research, 67, 849-864.
- Garcia-Aparicio, M.P., Ballesteros, I., González, A., Oliva, J.M., Ballesteros, M., and Negro, M.J. (2006) Effect of inhibitors released during steam-explosion pretreatment of barley straw on enzymatic hydrolysis. Applied Biochemistry and Biotechnology, 129(1-3), 278-288.
- Goyal, A., Ghosh, B., and Eveleigh, D. (1991) Characterisation of fungal cellulases. Bioresource Technology, 36, 37-50.
- Gray, K.A., Zhao, L., and Emptage, M. (2006) Bioethanol. Current Opinion Chemistry Biology, vol. 10, 141-146.

- Harmsen, P., Huijgen, W., Bermudez, L., and Bakker, R. (2010) Literature review of physical and chemical pretreatment processes for lignocellulosic biomass. Biosynergy, 1184, 11-33.
- Hayes, D.J. (2009) An examination of biorefining processes, catalysts and challenges. Catalyst Today, 145, 138–51.
- Hendriks, A.T.W.M. and Zeeman, G. (2009) Pretreatments to enhance the digestibility of lignocellulosic biomass. Bioresource Technology, Vol.100, No.(1), 10-18.
- Hinman, N.D., Schell, D.J., Riley, C.J., Bergeron, P.W., and Walter, P.J. (1992) Preliminary estimate of the cost of ethanol production for SSF technology. Applied Biochemistry and Biotechnology, 34/35, 639-649.
- Hokittikul, N. (2013) Glucose production from corncob by microbial hydrolysis. M.S. Thesis, The Petroleum and Petrochemical College, Chulalongkorn University.
- Holtzapple, M.T., Jun, J.H., Ashok, G., Patibandla, S.L., and Dale, B.E. (1991) The ammonia freeze explosion (AFEX) process-A practical lignocellulose pretreatments. Applied Biochemistry and Biotechnology, 28, 59-74.
- Howard, R.L., Abotisi, E., Rensburg, E.L., and Howard, S. (2003) Lignocellulose biotechnology: issues of bioconversion and enzyme production. African Journal of Biotechnology, 2(12), pp 602-619.
- Immanuel, G., Dhanusa, R., Prema, P., and Palavesam, A. (2006) Effect of different growth parameters on endoglucanase enzyme activity by bacteria isolated from coirretting effluents of estuarine environment. International Journal of Environmental Science and Technology, 3, 25-34.
- Jeoh, T. (1998) Steam explosion pretreatment of cotton gin waste for fuel ethanol production. M.S. Thesis, Virginia Polytechnic Institute and State University.
- Jørgensen, H., Kristensen, J., and Felby, C. (2007) Enzymatic conversion of lignocellulose into fermentable sugars: challenges and opportunities. Biofuels, Bioproducts & Biorefining, 1, 119-134.
- Kim, S.B., Lee, S.J., Lee, J.H., Jung, Y.R., Thapa, L.P., Kim, J.S., Um, Y., Park, C., and Kim, S.W. (2009) Pretreatment of rice straw with combined process

- using dilute sulfuric acid and aqueous ammonia. Biotechnology for Biofuels, 6, 1-11.
- Kim, S.H. (2004) Lime pretreatment and enzymatic hydrolysis of corn stover. Doctoral dissertation. Texas A&M University.
- Kuhad, R.C., Singh, A., and Eriksson, K.L. (1997) Microorganisms and enzymes involved in the degradation of plant fiber cell walls. Advance in Biochemical Engineering/Biotechnology, 57, 45-125.
- Kumar, P., Barrett, M.D., Delwiche, J.M., and Stroeve, P. (2009) Methods for pretreatment of lignocellulosic biomass for efficient hydrolysis and biofuel production. Industrial and Engineering Chemistry Research, 48, 3713-3729.
- Laser, M., Schulman, D., Allen, S.G., Lichwan, J., Antal, M.J., and Lynd, L.R. (2002) A comparison of liquid hot water and steam pretreatments of sugar cane bagasse for bioconversion to ethanol. Bioresource Technology, 81, 33-44.
- Li, S., Xu, S., Liu, S., Yang, C., and Lu, Q. (2004) Fast pyrolysis of biomass in free-fall reactor for hydrogen-rich gas. Fuel Process Technology, 8(8-10), 1201-1211.
- Loh, Y.R., Sujana, D., Rahman, M.E., and Das, C.A. (2013) Sugarcane bagasse- the future composite material: a literature review. Resources, Conservation and Recycling, 75, 14-22.
- Lynd, L.R., Elander, R.T., and Wyman, C.E. (1996) Likely features and costs of mature biomass ethanol technology. Applied Biochemistry and Biotechnology, 57-58, 741-761.
- Magnelli, P. and Forchiassin, F. (1999) Regulation of the cellulase complex production by *Saccobolus saccoboloides*: Induction and repression by carbohydrates. Mycologia, 91, 359-364.
- Mais, U., Esteghlalian, A., Saddler, J., and Mansfield, S. (2002) Enhancing the enzymatic hydrolysis of cellulosic materials using simultaneous ball milling. Applied Biochemistry and Biotechnology, 98, 815-839.
- Malherbe, S. and Cloete, T.E. (2002) Lignocellulosic biodegradation: Fundamentals and applications: A review. Environmental Science and Biotechnology, 1, 105-114.

- Martin, C., Marcet, M., and Thomsen, A.B. (2008) Comparison between wet oxidation and steam explosion as pretreatment methods for enzymatic hydrolysis of sugarcane bagasse. Bioresource Technology, vol.3, 670-683.
- Mason, W.H. (1926) U.S. Patent # 1.578,609
- McCarthy, J.E. and Tiemann, M. (2006) CRS report for congress. MTBE in gasoline: clean air and drinking water issues. University of Nebraska-Lincoln.
- McMillan, J.D. (1994) Pretreatment of lignocellulosic biomass. In *Enzymatic Conversion of Biomass for Fuels Production*; Himmel, M.E., Baker, J.O., Overend, R.P.(Eds.); American Chemical Society: Washington, DC, pp.292-324.
- Mosier, N.S., Wyman, C., Dale, B., Elander, R., Lee, Y.Y., Holtzapple, M., and Ladisch, M.R. (2005) Features of promising technologies for pretreatment of lignocellulosic biomass. Bioresource Technology, 96, 673-686.
- Mousdale, D.M. (2008) Biofuels: Biotechnology, Chemistry, and Sustainable Development. New York: Taylor and Francis Group.
- Murad, H.A. and Azzaz, H.H. (2010) Cellulase and dairy animal feeding. Biotechnology, 9(3), 238-256.
- Mussatto S.I. and Teixeira J.A. (2010) Lignocellulose as raw material in fermentation processes. Applied Microbiology and Microbial Biotechnology, 897-907.
- Peng, F., Ren, J.L., Xu, F., Bian, J., Peng, P., and Sun, R.C. (2009) Comparative study of hemicelluloses obtain by graded ethanol precipitation from sugarcane bagasse. Journal of Agricultural and Food Chemistry, doi:10.1021/jf900986b.
- Perez, J., Dorado, J.M., Rubia, T.D., and Martinez, J. (2002) Biodegradation and biological treatment of cellulose, hemicellulose, and lignin: An overview. International Microbiology, 5, 53-63.
- Rabinovich, M.L., Melnik, M.S., and Boloboba, A.V. (2002a) Microbial cellulases (Review). Applied Biochemistry and Microbiology, 38(4), 305-321.
- Rabinovich, M.L., Melnik, M.S., and Boloboba, A.V. (2002b) The structure and mechanism of action of cellulolytic enzymes. Biochemistry (Moscow), 67(8), 850-871.

- Saha, B. (2003) Hemicellulose Bioconversion. Journal of Industrial Microbiology and Biotechnology, 30, 279-291.
- Saha, B., Iten, L., Cotta, M., and Wu, Y. (2005) Dilute acid pretreatment, enzymatic saccharification, and fermentation of rice hulls to ethanol. Biotechnology Progress, 21, 816-822.
- Saliu K.B. and Sani, A. (2012) Bioethanol potentials of corncob hydrolysed using cellulases of *Aspergillus niger* and *Penicillium decumbens*. Experimental and Clinical Sciences Journal, 11, 468-479.
- Schultz, T.P., M.C. Templeton, C.J. Biermann, and G.D. Mc Ginnis. (1984) Steam explosion of mixed hardwood chips, rice hulls, corn stalks, and sugarcane bagasse. Journal of Agricultural and Food Chemistry, 32, 1166-1172.
- Segal, L., Greely, J.J., Martin, A.E.J., and Conrad, L.M. (1959) Textile Research Journal, 29, 780-794.
- Shin, C.S., Lee, J.P., Lee, J.S., and Park, S.C. (2000) Enzyme production of *Trichoderma reesei* Rut C-30 on various lignocellulosic substrates. Applied Biochemistry and Biotechnology, 84-86, 237-245.
- Siddique, S. H. and Vardo-Zalik, A. M. (2012) The Effects of available glucose concentration on the population dynamics of growing *Escherichia coli* cultures, John T. and Paige S. Smith Undergraduate Science Research Symposium Proceedings, 5, 7-12.
- Sindhu, R., Binod, P., Satyanagalakshmi, K., Janu, K.U, Sajna, K.V, Kurien, N., Sukumaran, R., and Pandey, A. (2010) Formic acid as a potential pretreatment agent for the conversion of sugarcane bagasse to bioethanol. Applied Biochemistry and Biotechnology, 162, 2313-2323.
- Siver, M.V. and Zacchi, G. (1995) A techno-economical comparison of three processes from the production of ethanol from pine. Bioresource Technology, 51, 43-52.
- Supantamart, N., Laemsak, N., Sirisansaneeyakul, S., Vanichsritatana, W., and Parakulsuksatid, P. (2008) Effect of steam explosion on chemical compositions of biomass from eucalyptus and acacia. The 3<sup>rd</sup> International Conference on Fermentation Technology for Value Added Agricultural Production, 1-6.

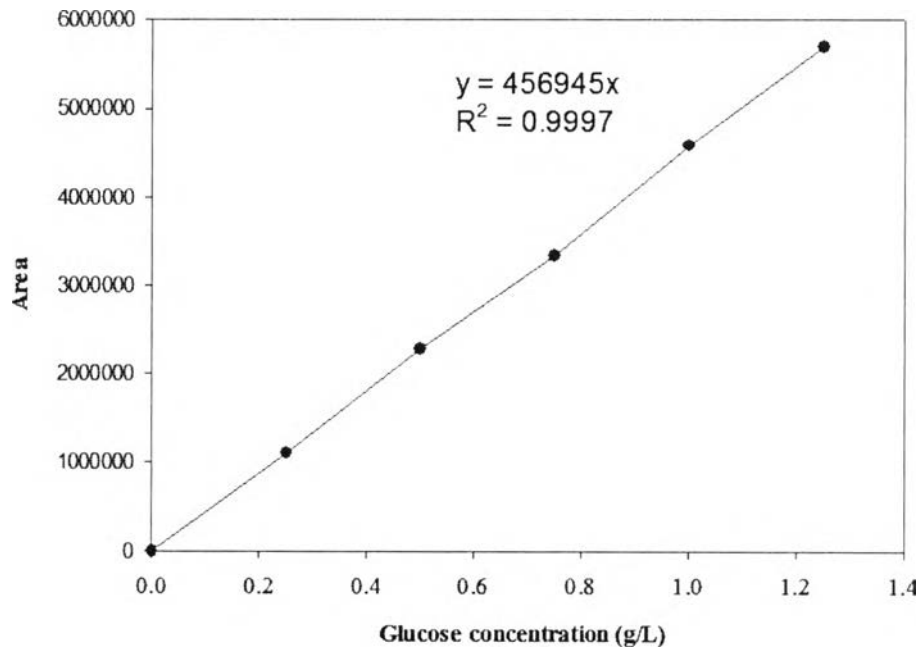
- Suto, M. and Tomito, F. (2001) Induction and catabolite repression mechanisms of cellulase in fungi. Journal of Bioscience and Bioengineering, 92, 305-311.
- Sun, Y. and Cheng, J.Y. (2002) Hydrolysis of lignocellulosic materials for ethanol production: a review. Bioresource Technology, 83, 1-11.
- Taechapoempol, K., Sreethawong, T., Rangsunvigit, P., Namprohm, W., Thamprajamchit, B., Rengpipat, S., and Chavadej, S. (2011) Isolation of cellulose-degrading bacteria from termites *Microcerotermes* sp. Applied Biochemistry and Biotechnology, 164, 204-219.
- Taherzadeh, M.J. and Karimi, K. (2008) Pretreatment of lignocellulosic wastes to improve ethanol and biogas production: A review. International Journal of Molecular Sciences, 9, 1621-1651.
- Talebnia, F., Karakashev, D., and Angelidaki, I. (2010) Production of bioethanol from wheat straw: An overview on pretreatment, hydrolysis and fermentation. Bioresource Technology, 101, 4744-4753.
- Taherzadeh, M.J. and Karimi, K. (2007) Acid-based hydrolysis processes for ethanol from lignocellulosic materials: A review. Bioresources, vol. 2, 472-499.
- Tarkow, H. and Feist, W.C. (1969) In: Mechanism for improving the digestibility of lignocellulosic materials with dilute alkali and liquid NH<sub>3</sub>. American Chemical Society, Washington, DC. pp. 197-218.
- Teymouri, F., Perez, L., Alizadeh, H., and Dale, B.E. (2005) Optimization of the ammonia fiber explosion (AFEX) treatment parameters for enzymatic hydrolysis of corn stover. Bioresource Technology, 96, 2014-2018.
- Weil, J., Westgate, P., Kohlmann, K., and Ladisch, M.R. (1994) Cellulose pretreatments of lignocellulosic substrates. Enzyme Microb. Technol., 16, November.
- Wen, Z., Liao, W., and Chen, S. (2004) Hydrolysis of animal manure lignocellulosics for reducing sugar production. Bioresource Technology, 91, 31-39.



- Wongskeo, P., Rangsunvigit, P., and Chavadej, S. (2012) Production of glucose from the hydrolysis of cassava residue using bacteria isolates from Thai higher termites. World Academy of Science, Engineering and Technology, 64, 353-356.
- Worasamutprakarn, C. (2010) Conversion of cellulose to glucose by microbes isolated from higher termites. M.S. Thesis, The Petroleum and Petrochemical College, Chulalongkorn University.
- Wyman, C.E. (1993) Cellulosic biomass conversion technology and its application to ethanol production from corn. Fuel Reformulation, March/April, pp.67-74.
- Wyman, C.E. (1994) Ethanol from lignocellulosic biomass: technology, economics, and opportunities. Bioresource Technology, 50, 3-15.
- Wyman, C.E. (1996) Handbook on Bioethanol: Production and Utilization. Washington, DC: Taylor and Francis.
- Wyman, C.E. and Goodman, B.J. (1993a) Biotechnology for production of fuels, chemicals, and materials. Applied Biochemistry and Biotechnology, 39/40, 41.
- Wyman, C.E. and Goodman, B.J. (1993b) Near term application of biotechnology to fuel ethanol production from lignocellulosic biomass. In Opportunities for Innovation in Biotechnology, ed. R.. Busche. National Institute of Standards and Technology, Gaithersburg, MD (accepted for publication).
- Wyman, C.E., Decker, S.R., Himmel, M.E., Brady, J.W., Skopec, C.E., and Viikari, L. (2005) Hydrolysis of cellulose and hemicellulose. Marcel Dekker, 43.
- Yeh, A.I., Huang, Y.I, and Chen, S.H. (2010) Effect of particle size on the rate of enzymatic hydrolysis of cellulose. Carbohydrate Polymers, 79, 192-199.
- Zimbardi, F., Viola, E., Nanna, F., Larocca, E., Cardinale, M., and Barisano, D. (2007) Acid impregnation and steam explosion of corn stover in batch processes. Industrial Crops and Products, 26, 195-206.
- <http://www.ethanolrfa.org/pages/how-ethanol-is-made>
- <http://replacingoil.com/2010/08/three-cellulosic-ethanol-plants-race-to-begin-production>
- <http://www.bioenergyconsult.com/production-cellulosic-ethanol/>

## APPENDICES

### Appendix A Standard Glucose Calibration Curve



**Figure A1** Calibration curve for sugar analysis HPLC glucose determination.

**Table A1** Glucose calibration curve

<b>Glucose Concentration (g/L)</b>	<b>Avg. Glucose Area</b>
0	0
0.25	110731
0.50	228073
0.75	333867
1.00	458414
1.25	569885.5

## Appendix B Media for Microorganisms

### 1. 65 modified DSMZ broth medium 2

Approximate Formula\* Per Liter

Carboxymethyl Cellulose (CMC)	5.0	g
Yeast extract	4.0	g
Malt extract	10.0	g

Dissolve and adjust pH to 7.2

Autoclave at Temperature = 121°C and Pressure = 15 lbs/in<sup>2</sup> for 20 minutes.

### 2. 65 modified DSMZ agar medium 2

Approximate Formula\* Per Liter

Carboxymethyl cellulose (CMC)	5.0	g
Yeast extract	4.0	g
Malt extract	10.0	g
Agar	12.0	g

Dissolve and adjust pH to 7.2

Autoclave at Temperature = 121°C and Pressure = 15 lbs/in<sup>2</sup> for 20 minutes.

**Appendix C Reagent Preparations****1. 0.85%(w/v) NaCl in 1000 mL**

Sodium chloride (NaCl)	8.5	g
Distilled water	1000	mL

**2. Hydrochloric acid 1 N in 100 mL**

Hydrochloric acid (HCl conc.)	8.29	mL
Distilled water	91.71	mL

**3. Sodium hydroxide 0.5 N in 1000 mL**

Sodium hydroxide (NaOH)	5.0	g
Distilled water	1000	mL

**4. Sulfuric acid 0.72 N in 1000 mL**

Sulfuric acid (H <sub>2</sub> SO <sub>4</sub> conc.)	72	mL
Distilled water	28	mL

**5. Sulfuric acid (0.9 %w/w)**

Sulfuric acid (H <sub>2</sub> SO <sub>4</sub> conc.)	0.9	g
Distilled water	100	mL

**6. 0.2 M Acetic acid in 1000 mL**

Acetic acid (CH <sub>3</sub> COOH)	11.6	mL
Distilled water	988.4	mL

## Appendix D Bacteria Concentration

Bacteria concentration was determined using total nitrogen test kit.

### 1. The bacteria concentration from enzymatic hydrolysis

During enzymatic hydrolysis, bacteria growth was monitored by withdrawing samples from the hydrolysis reactor periodically. Solid that obtained from centrifuging of the sample, contained of bagasse and bacteria. Method that can calculate weight of bacteria and bagasse is shown in equation D1.

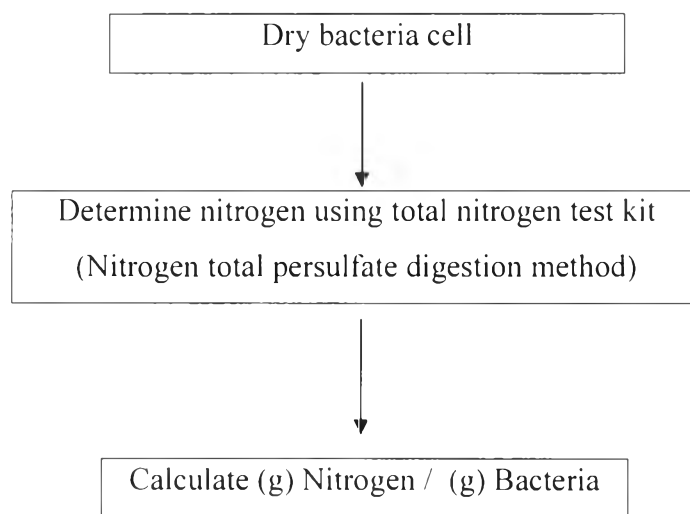
$$\text{wt. Solid} = \text{wt. bagasse} + \text{wt. Bacteria} \quad (\text{D1})$$

Then, a concentration of bacteria was determined by the total nitrogen test kit.

$$\text{wt. Bacteria} = \frac{\text{g Nitrogen contained in sample}}{(\text{g Nitrogen} / 1 \text{ g Bacteria})} \quad (\text{D2})$$

### 1.1 The amount of nitrogen in bacteria

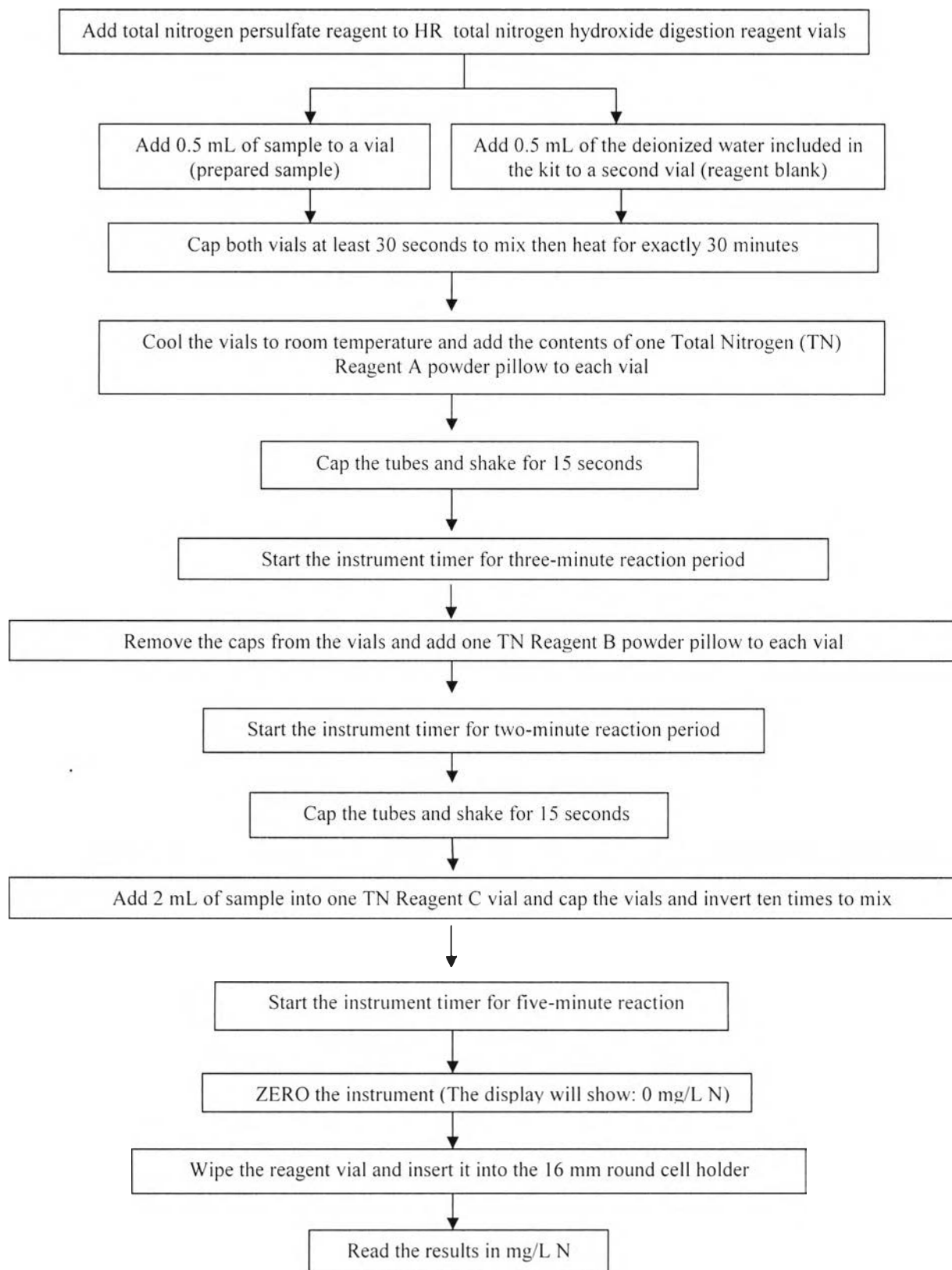
The amount of nitrogen in each strain was determined in triplicates by using the total nitrogen test kit. Figure D1 shows procedure for determination



**Figure D1** Diagram for determination the amount of nitrogen in bacteria.

### Procedure

Nitrogen total persulfate digestion method is conducted in order to check amount of nitrogen which directly related to amount of bacteria during hydrolysis.



**Figure D2** Procedure for analyzing amount of nitrogen.

**Appendix E HPLC Analysis****Table E1** Glucose production from the microbial hydrolysis of untreated corncob (80 mesh) with bacteria strain A002 at 37 °C.

<b>Time (h)</b>	<b>Area</b>	<b>Glucose concentration (g/L)</b>
0	93389	0.204
1	66076	0.145
2	49994	0.109
3	91461	0.200
4	90563	0.198
5	120238	0.263
6	121146	0.265
7	96766	0.212
8	94886	0.208
9	107323	0.235
10	81039	0.177
12	54673	0.120
14	21527	0.047
16	10612	0.023
18	8062	0.018
20	4213	0.009
22	4039	0.009
24	5109	0.011



**Table E2** Glucose production from the microbial hydrolysis of untreated sugarcane bagasse ( 80 mesh ) with bacteria strain A002 at 37 °C.

<b>Time (h)</b>	<b>Area</b>	<b>Glucose concentration (g/L)</b>
0	17882	0.039
1	16681	0.037
2	20828	0.046
3	40933	0.090
4	60869	0.133
5	77959	0.171
6	54531	0.119
7	42157	0.092
8	48914	0.107
9	46828	0.102
10	30118	0.066
12	18645	0.041
14	8904	0.019
16	7350	0.016
18	6346	0.014
20	7378	0.016
22	7783	0.017
24	10953	0.024

**Table E3** Glucose production from the microbial hydrolysis of 1 hour steam-explosion pretreated corncob and sugarcane bagasse by using H<sub>2</sub>O as a preimpregnation agent (solid/liquid ratio: 1/10) with bacteria strain A002 at 37 °C.

<b>Time (h)</b>	<b>Glucose concentration from corncob (g/L)</b>	<b>Glucose concentration from Sugarcane bagasse (g/L)</b>
0	0.112	0.055
1	0.048	0.029
2	0.085	0.086
3	0.144	0.142
4	0.236	0.278
5	0.248	0.352
6	0.180	0.369
7	0.140	0.327
8	0.061	0.300
9	0.071	0.250
10	0.145	0.182
12	0.176	0.105
14	0.176	0.018
16	0.086	0.036
18	0.063	0.030
20	0.041	0.074
22	0.024	0.026
24	0.037	0.032

**Table E4** Glucose production from the microbial hydrolysis of 2 hour steam-explosion pretreated corncob and sugarcane by using H<sub>2</sub>O as a preimpregnation agent (solid/liquid ratio: 1/10) with bacteria strain A002 at 37 °C.

<b>Time (h)</b>	<b>Glucose concentration from corncob (g/L)</b>	<b>Glucose concentration from Sugarcane bagasse (g/L)</b>
0	0.033	0.171
1	0.051	0.105
2	0.089	0.096
3	0.149	0.170
4	0.217	0.266
5	0.268	0.338
6	0.190	0.364
7	0.149	0.237
8	0.141	0.241
9	0.039	0.084
10	0.036	0.035
12	0.025	0.020
14	0.029	0.007
16	0.012	0.005
18	0.007	0.011
20	0.009	0.004
22	0.008	0.009
24	0.008	0.008

**Table E5** Glucose production from the microbial hydrolysis of 3 hour steam-explosion pretreated corncob and sugarcane bagasse by using H<sub>2</sub>O as a preimpregnation agent (solid/liquid ratio: 1/10) with bacteria strain A002 at 37 °C.

<b>Time (h)</b>	<b>Glucose concentration from corncob (g/L)</b>	<b>Glucose concentration from Sugarcane bagasse (g/L)</b>
0	0.172	0.087
1	0.156	0.051
2	0.100	0.099
3	0.141	0.122
4	0.201	0.206
5	0.259	0.260
6	0.245	0.269
7	0.228	0.236
8	0.151	0.139
9	0.073	0.066
10	0.036	0.035
12	0.019	0.039
14	0.018	0.046
16	0.021	0.005
18	0.018	0.011
20	0.012	0.010
22	0.024	0.008
24	0.030	0.008

**Table E6** Glucose production from the microbial hydrolysis of 1 hour steam-explosion pretreated corncob and sugarcane by using H<sub>2</sub>SO<sub>4</sub> as a preimpregnation agent (H<sub>2</sub>SO<sub>4</sub> 0.9% w/w) with bacteria strain A002 at 37 °C.

<b>Time (h)</b>	<b>Glucose concentration from corncob (g/L)</b>	<b>Glucose concentration from Sugarcane bagasse (g/L)</b>
0	0.077	0.201
1	0.062	0.034
2	0.065	0.567
3	0.166	0.600
4	0.249	0.419
5	0.265	0.322
6	0.216	0.292
7	0.137	0.250
8	0.067	0.166
9	0.057	0.126
10	0.033	0.066
12	0.019	0.052
14	0.004	0.046
16	0.007	0.025
18	0.007	0.011
20	0.004	0.009
22	0.008	0.013
24	0.008	0.002

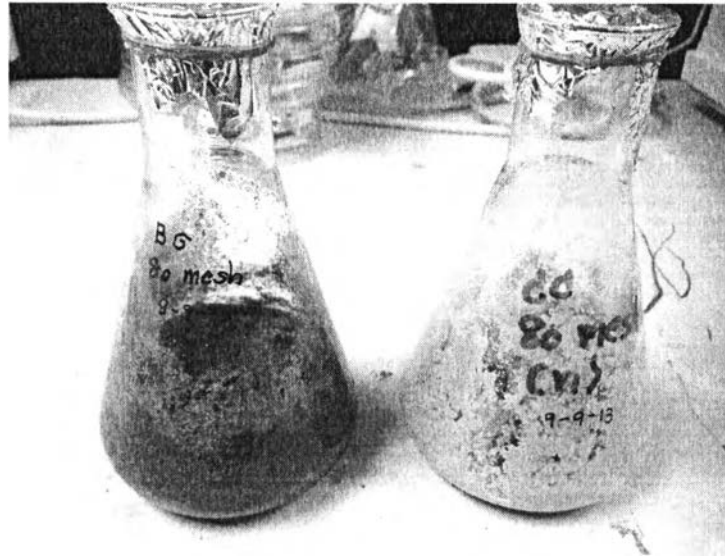
**Table E7** Glucose production from the microbial hydrolysis of 2 hour steam-explosion pretreated corncob and sugarcane bagasse by using H<sub>2</sub>SO<sub>4</sub> as a preimpregnation agent (H<sub>2</sub>SO<sub>4</sub> 0.9% w/w) with bacteria strain A002 at 37 °C.

<b>Time (h)</b>	<b>Glucose concentration from corncob (g/L)</b>	<b>Glucose concentration from Sugarcane bagasse (g/L)</b>
0	0.068	0.024
1	0.059	0.056
2	0.084	0.078
3	0.130	0.158
4	0.208	0.488
5	0.246	0.291
6	0.181	0.223
7	0.137	0.156
8	0.101	0.073
9	0.053	0.027
10	0.033	0.034
12	0.015	0.016
14	0.004	0.004
16	0.016	0.005
18	0.008	0.016
20	0.009	0.004
22	0.013	0.009
24	0.002	0.006

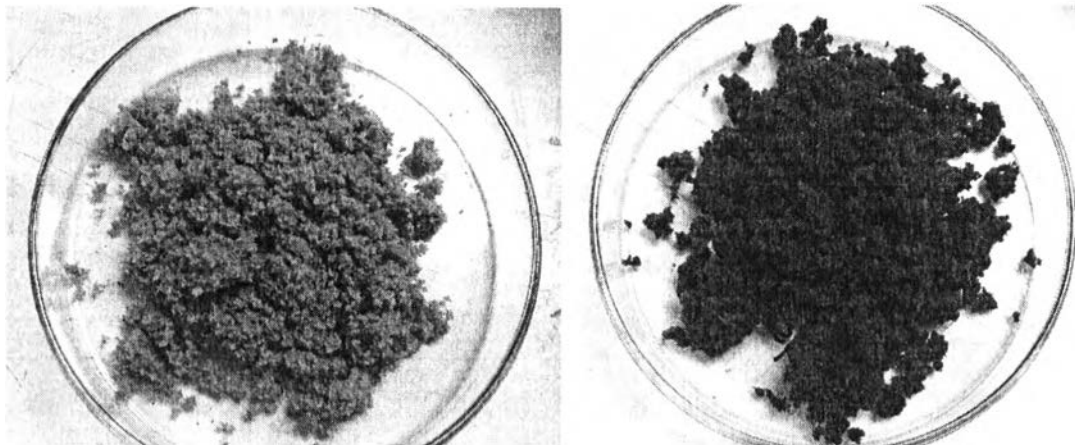
**Table E8** Glucose production from the microbial hydrolysis of 3 hour steam-explosion pretreated corncob and sugarcane bagasse by using H<sub>2</sub>SO<sub>4</sub> as a preimpregnation agent (H<sub>2</sub>SO<sub>4</sub> 0.9% w/w) with bacteria strain A002 at 37 °C.

<b>Time (h)</b>	<b>Glucose concentration from corncob (g/L)</b>	<b>Glucose concentration from Sugarcane bagasse (g/L)</b>
0	0.022	0.025
1	0.043	0.048
2	0.062	0.089
3	0.173	0.169
4	0.252	0.390
5	0.224	0.542
6	0.180	0.527
7	0.123	0.462
8	0.114	0.287
9	0.071	0.182
10	0.031	0.034
12	0.015	0.040
14	0.003	0.004
16	0.020	0.025
18	0.028	0.041
20	0.023	0.041
22	0.018	0.025
24	0.026	0.035

## Appendix F Appearance of the Steam-Explosion Pretreated Corncob and Sugarcane Bagasse

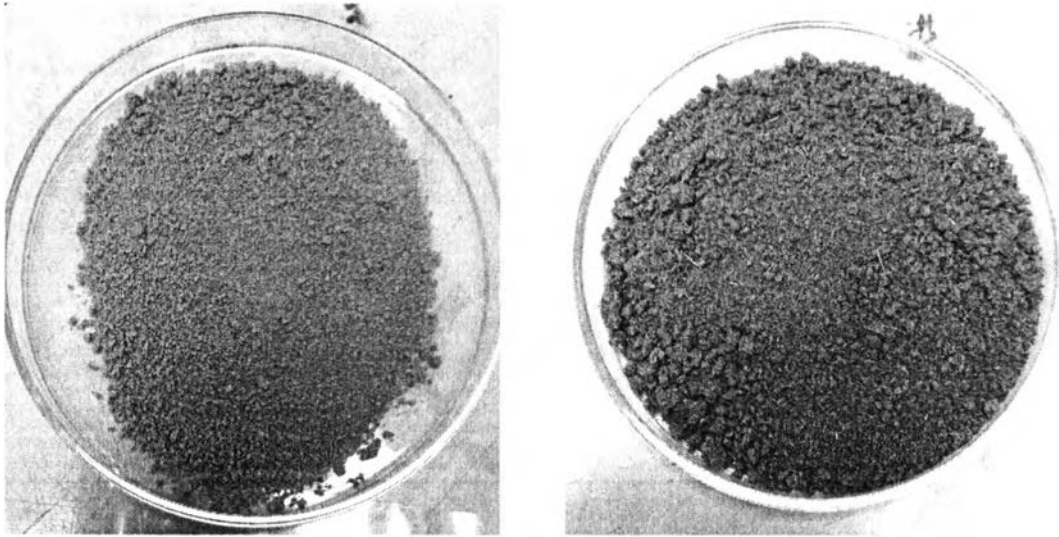


**Figure F1** Soaked corncob (right) and bagasse (left) in water (SLR = 1:10) for 24 hours at 60 °C.



**Figure F2** Steam-explosion pretreatment of 80 mesh corncob (left) and bagasse (right) at 120 °C.





**Figure F3** The water-insoluble-fraction (WIS) of corncob (left) and sugarcane bagasse (right) after steam explosion pretreatment and dried at 60 °C overnight for storage.

## Appendix G Glucose and Bacteria Evolution Data

**Table G1** Glucose and Bacteria evolution from the microbial hydrolysis of untreated sugarcane bagasse with strain A 002 at 37 °C

Time (h)	Glucose Concentration (g/L)	Nitrogen Bacteria (g/L)
0	0.309	0.154
2	0.046	0.278
4	0.133	0.274
6	0.119	0.340
8	0.107	0.479
10	0.066	0.692
12	0.041	0.834
14	0.019	0.932
16	0.016	0.976
18	0.014	0.967
20	0.016	1.020
22	0.017	1.012
24	0.024	1.154

**Table G2** Glucose and Bacteria evolution from the microbial hydrolysis of untreated corncob with strain A 002 at 37 °C

Time (h)	Glucose Concentration (g/L)	Nitrogen Bacteria (g/L)
0	0.204	0.115
2	0.109	0.358
4	0.198	0.421
6	0.265	0.468
8	0.208	0.552
10	0.177	0.748
12	0.120	0.780
14	0.047	0.776
16	0.023	0.830
18	0.018	0.850
20	0.009	0.980
22	0.009	1.092
24	0.011	1.211

**Table G3** Glucose and Bacteria evolution from the microbial hydrolysis of 2 hour steam-explosion pretreated corncob by using H<sub>2</sub>O as a preimpregnation agent with strain A 002 at 37 °C

Time (h)	Glucose Concentration (g/L)	Nitrogen Bacteria (g/L)
0	0.033	0.109
2	0.089	0.313
4	0.217	0.406
6	0.190	0.410
8	0.141	0.427
10	0.036	0.428
12	0.025	0.458
14	0.029	0.459
16	0.012	0.509
18	0.007	0.583
20	0.009	0.593
22	0.008	0.595
24	0.008	0.619

**Table G4** Glucose and Bacteria evolution from the microbial hydrolysis of 1 hour steam-explosion pretreated sugarcane bagasse by using H<sub>2</sub>O as a preimpregnation agent with strain A 002 at 37 °C

Time (h)	Glucose Concentration (g/L)	Nitrogen Bacteria (g/L)
0	0.055	0.190
2	0.086	0.284
4	0.278	0.294
6	0.369	0.319
8	0.300	0.366
10	0.182	0.392
12	0.105	0.401
14	0.018	0.410
16	0.036	0.420
18	0.030	0.422
20	0.074	0.434
22	0.026	0.469
24	0.032	0.567

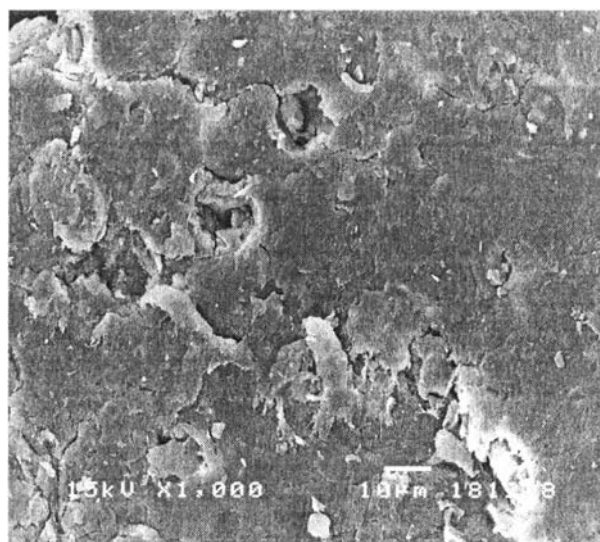
**Table G5** Glucose and Bacteria evolution from the microbial hydrolysis of 1 hour steam-explosion pretreated corncob by using H<sub>2</sub>SO<sub>4</sub> as a preimpregnation agent with strain A 002 at 37 °C

Time (h)	Glucose Concentration (g/L)	Nitrogen Bacteria (g/L)
0	0.077	0.247
2	0.065	0.329
4	0.249	0.393
6	0.216	0.455
8	0.067	0.505
10	0.033	0.537
12	0.019	0.542
14	0.004	0.544
16	0.007	0.590
18	0.007	0.601
20	0.004	0.602
22	0.008	0.631
24	0.008	0.685

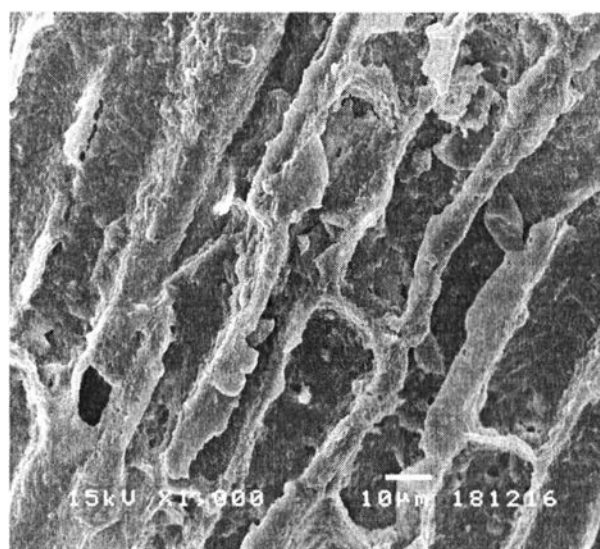
**Table G6** Glucose and Bacteria evolution from the microbial hydrolysis of 1 hour steam-explosion pretreated sugarcane bagasse by using H<sub>2</sub>SO<sub>4</sub> as a preimpregnation agent with strain A 002 at 37 °C

Time (h)	Glucose Concentration (g/L)	Nitrogen Bacteria (g/L)
0	0.201	0.545
2	0.567	0.598
4	0.419	0.647
6	0.292	0.648
8	0.166	0.652
10	0.066	0.679
12	0.052	0.657
14	0.046	0.666
16	0.025	0.673
18	0.011	0.678
20	0.009	0.681
22	0.013	0.686
24	0.002	0.688

**Appendix H SEM images of Before and After Microbial Hydrolysis of Corncob and Sugarcane Bagasse**

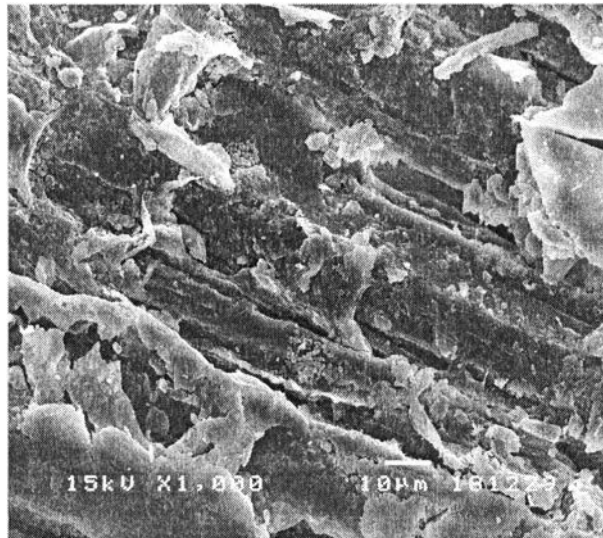


**Figure H1** Scanning electron micrographs of the untreated corncob surface before hydrolysis.

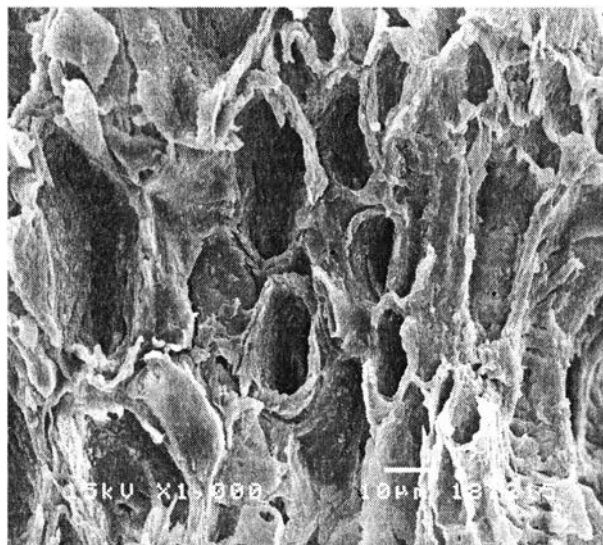


**Figure H2** Scanning electron micrographs of the untreated corncob surface after hydrolysis by using bacteria strain A002 at 37 °C.



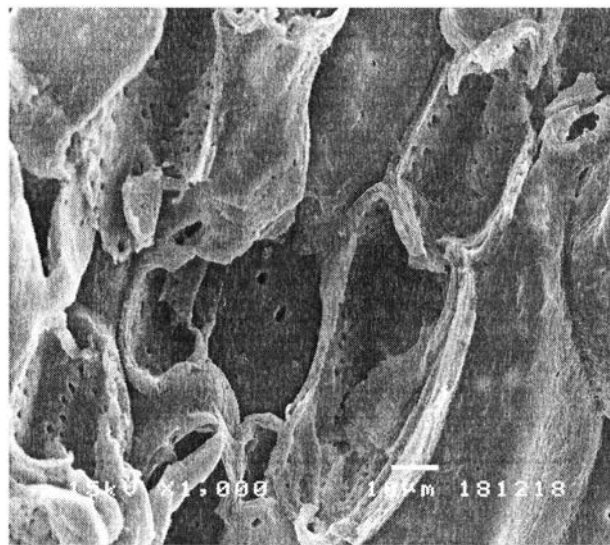


**Figure H3** Scanning electron micrographs of the untreated sugarcane bagasse surface before hydrolysis.

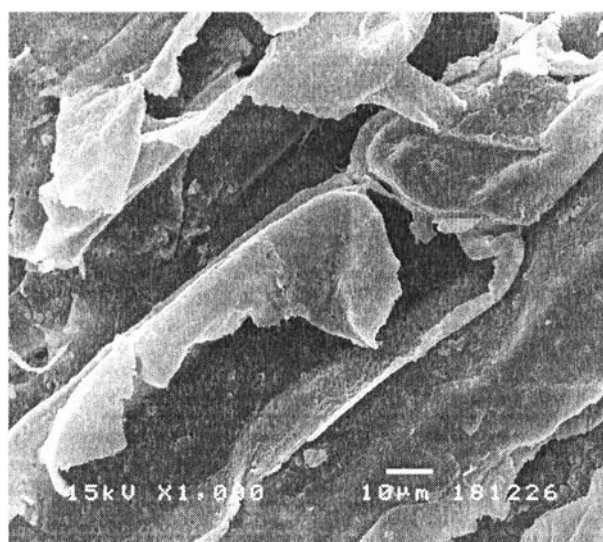


**Figure H4** Scanning electron micrographs of the untreated sugarcane bagasse surface after hydrolysis by using bacteria strain A002 at 37 °C.

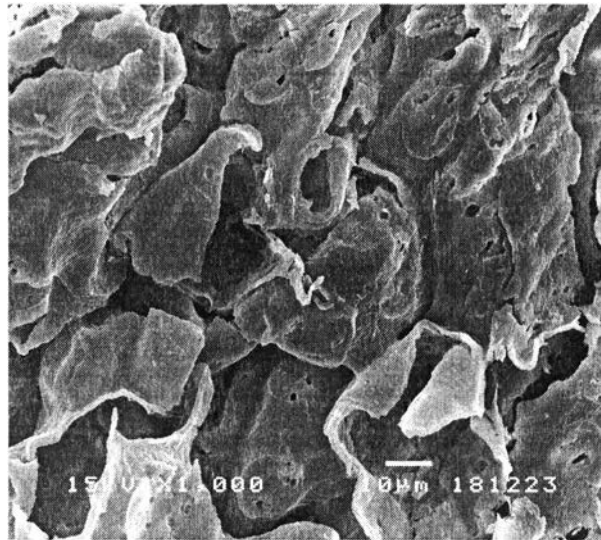
**Appendix I SEM images After Steam-Explosion Pretreatment of Corncob and Sugarcane Bagasse**



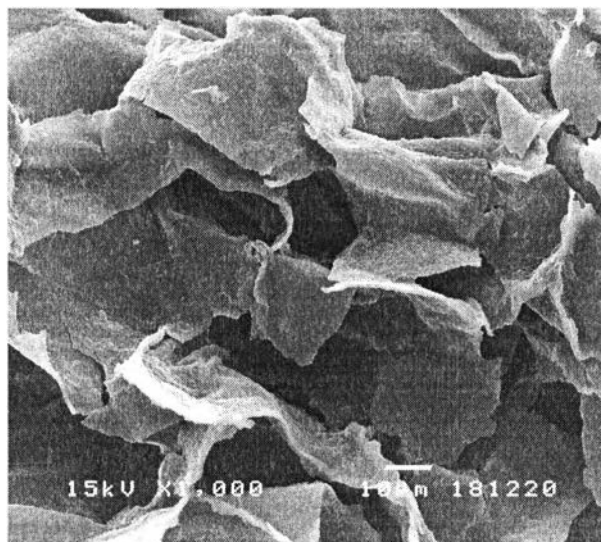
**Figure I1** Scanning electron micrographs of the corncob surface after steam-explosion pretreatment with H<sub>2</sub>O.



**Figure I2** Scanning electron micrographs of the sugarcane bagasse surface after steam-explosion pretreatment with H<sub>2</sub>O.



**Figure I3** Scanning electron micrographs of the corncob surface after steam-explosion pretreatment with H<sub>2</sub>SO<sub>4</sub>.



**Figure I4** Scanning electron micrographs of the sugarcane bagasse surface after steam-explosion pretreatment with H<sub>2</sub>SO<sub>4</sub>.

## Appendix J Digestibility Calculation of The Chemical Composition Changes

The digestibility of the corncob and sugarcane bagasse residue due to the steam-explosion pretreatment process was determined by performing mass balance, as expressed below:

$$\text{Degradability (\%)} = \frac{\text{Input} - \text{Output}}{\text{Input}} \times 100 \quad (\text{J1})$$

**Table J1** Chemical composition of steam-explosion pretreated corncob and sugarcane bagasse by using H<sub>2</sub>O as a preimpregnation agent.

Pretreatment Time (h)	Chemical composition (g)							
	Corncob				Sugarcane bagasse			
	Cellulose	Hemicellulose	Lignin	Extractives	Cellulose	Hemicellulose	Lignin	Extractives
Untreated	0.435	0.320	0.183	0.067	0.429	0.266	0.127	0.197
1	0.289	0.168	0.165	0.059	0.352	0.102	0.115	0.164
2	0.294	0.161	0.173	0.058	0.372	0.0612	0.116	0.171
3	0.268	0.187	0.170	0.057	0.349	0.053	0.106	0.140

**Table J2** Chemical composition of steam-explosion pretreated corncob and sugarcane bagasse by using H<sub>2</sub>SO<sub>4</sub> as a preimpregnation agent.

Pretreatment Time (h)	Chemical composition (g)							
	Corncob				Sugarcane bagasse			
	Cellulose	Hemicellulose	Lignin	Extractives	Cellulose	Hemicellulose	Lignin	Extractives
1	0.254	0.167	0.170	0.057	0.389	0.062	0.115	0.172
2	0.244	0.167	0.168	0.055	0.380	0.035	0.115	0.163
3	0.241	0.181	0.167	0.055	0.377	0.021	0.114	0.168

**Table J3** Degradability from the steam-explosion pretreatment of corncob and sugarcane bagasse by using H<sub>2</sub>O as a preimpregnation agent.

Pretreatment Time (h)	Degradability (%)							
	Corncob				Sugarcane bagasse			
	Cellulose	Hemicellulose	Lignin	Extractives	Cellulose	Hemicellulose	Lignin	Extractives
1	33.664	47.490	9.968	9.805	17.967	61.536	9.999	16.743
2	32.515	49.710	5.764	11.633	13.310	76.854	8.977	13.028
3	38.514	41.516	7.020	13.766	18.828	79.940	7.162	28.651

**Table J4** Degradability from the steam-explosion pretreatment of corncob and sugarcane bagasse by using H<sub>2</sub>SO<sub>4</sub> as a preimpregnation agent.

Pretreatment Time (h)	Degradability (%)							
	Corncob				Sugarcane bagasse			
	Cellulose	Hemicellulose	Lignin	Extractives	Cellulose	Hemicellulose	Lignin	Extractives
1	41.640	47.928	7.456	3.378	9.328	76.854	9.370	12.723
2	43.962	47.709	8.548	4.655	11.424	86.677	9.528	17.303
3	44.697	43.299	8.985	3.004	12.309	91.983	10.392	14.453



